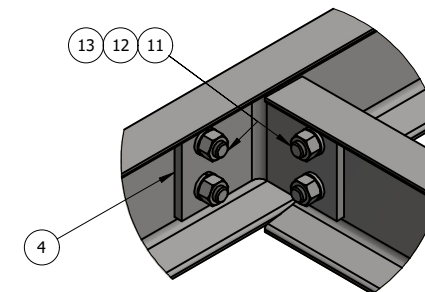
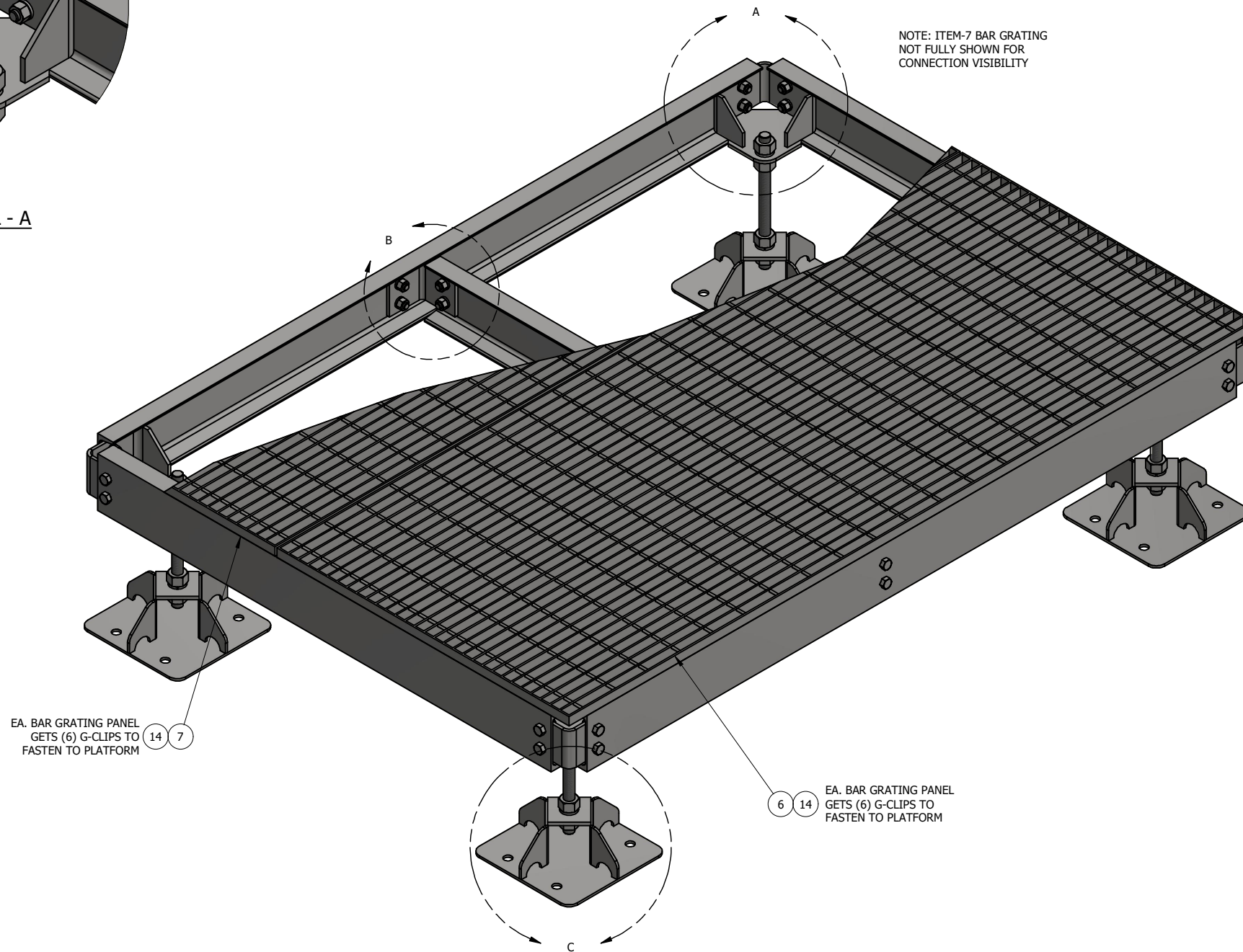


DETAIL - A

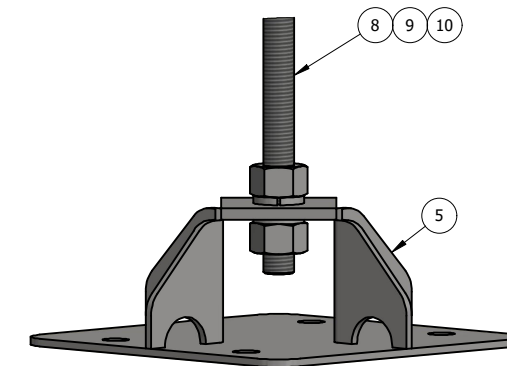


DETAIL - B



EA. BAR GRATING PANEL GETS (6) G-CLIPS TO FASTEN TO PLATFORM 14 7

EA. BAR GRATING PANEL GETS (6) G-CLIPS TO FASTEN TO PLATFORM 6 14



DETAIL - C

ITEM	PART #	QTY	DESCRIPTION	LENGTH	FINISH	UNIT WT
1	AF5M.01	3	C6x8.2	4'-7 5/8"	HDG	41.48
2	AF7M.01	2	C6x8.2	6'-7 5/8"	HDG	59.38
3	AFCB.05	4	CORNER BRACKET WELDMENT (FLUSH MOUNT)		HDG	9.71
4	AFCB.02	2	3/8" PLATE		SEE W/O	3.30
5	AFBP.01	4	BASE PLATE WELDMENT		HDG	15.63
6	AF3M.84	1	(19W-4) 1" x 3/16" B.G. @ 2'-11 13/16" WIDE	7'	HDG	150.43
7	AF2M.84	1	(19W-4) 1" x 3/16" B.G. @ 1'-11 15/16" WIDE	7'	HDG	101.77
8	27-5740-005	4	1" x 14" A36 HDG ALL-THREAD	1'-2"		3.12
9	27-5704-005	16	1 HDG LOCK WASHER			0.09
10	27-5700-005	16	1 HDG HEAVY HEX NUT			0.47
11	27-4401-005	24	5/8" x 1 1/2" GR.5 HDG BOLT			0.23
12	27-5380-005	24	5/8 HDG LOCK WASHER			0.03
13	27-5391-005	24	5/8" HDG HEX NUT			0.08
14	25-GG1A CLIP	12	GRATING G-CLIP			0.17

THIS DESIGN AND INFORMATION CONTAINED ON THIS PRINT IS THE PROPERTY OF VALLEY FAB CORPORATION. ANY REPRODUCTION, DUPLICATION OR TRANSFER OF THE PROPRIETARY CONTENT IS PROHIBITED WITHOUT WRITTEN PERMISSION.

STANDARD TOLERANCES:
(UNLESS OTHERWISE NOTED)
FRACTIONS ±1/16"
DECIMALS ±0.01"
ANGLES ±0.5°

NEWAVE
TOWER COMPONENTS, 503-792-3739
10910 PORTLAND RD. BROOKS, OR 97305

TOTAL WT: 633.1 LB

QTY:

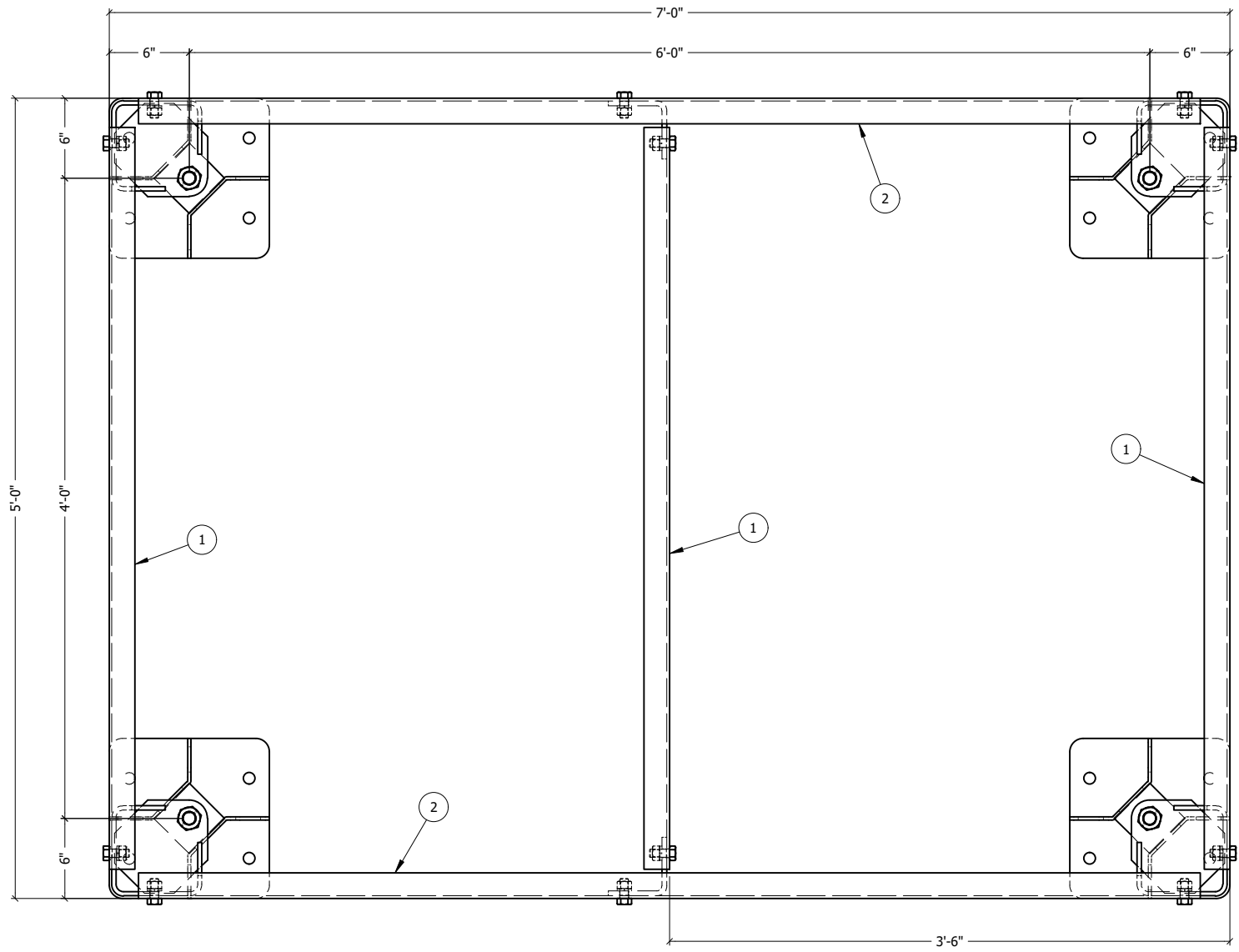
FINISH:

JOB #:

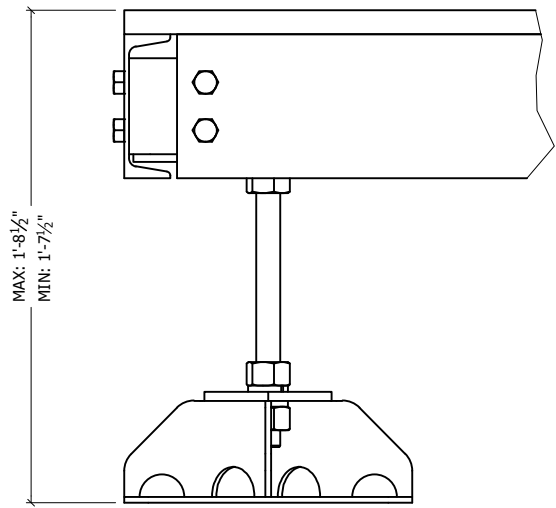
TITLE: 5' x 7' MODULAR PLATFORM WITH (4) ADJUSTABLE FEET (FLUSH W/ PLATFORM)

SERIES: PLATFORMS SHEET: 1 OF 2


DRAWN BY: KY DATE: 4/17/2023 CHK'D BY: -
DRAWING NO. AF57M-4F



FOOT PAD LAYOUT



ELEVATION

<small>THIS DESIGN AND INFORMATION CONTAINED ON THIS PRINT IS THE PROPERTY OF VALLEY FAB CORPORATION. ANY REPRODUCTION, DUPLICATION OR TRANSFER OF THE PROPRIETARY CONTENT IS PROHIBITED WITHOUT WRITTEN PERMISSION.</small>	
STANDARD TOLERANCES: <small>(UNLESS OTHERWISE NOTED)</small> FRACTIONS ±1/16" DECIMALS ±0.01" ANGLES ±0.5°	 NEWAVE <small>TOWER COMPONENTS, 503-792-3739 10910 PORTLAND RD. BROOKS, OR 97305</small>
TOTAL WT: 633.1 LB	
QTY:	
FINISH:	
JOB #:	

TITLE: 5' x 7' MODULAR PLATFORM WITH (4) ADJUSTABLE FEET (FLUSH W/ PLATFORM)		DRAWN BY: KY DATE: 4/17/2023	CHK'D BY: -
SERIES: PLATFORMS	SHEET: 2 OF 2	DRAWING NO. AF57M-4F	