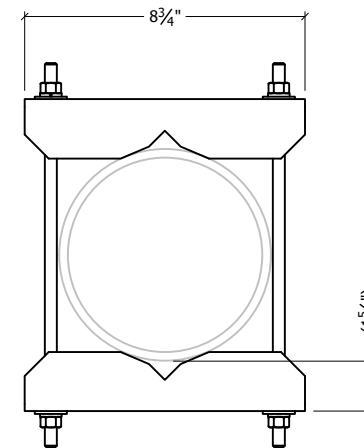
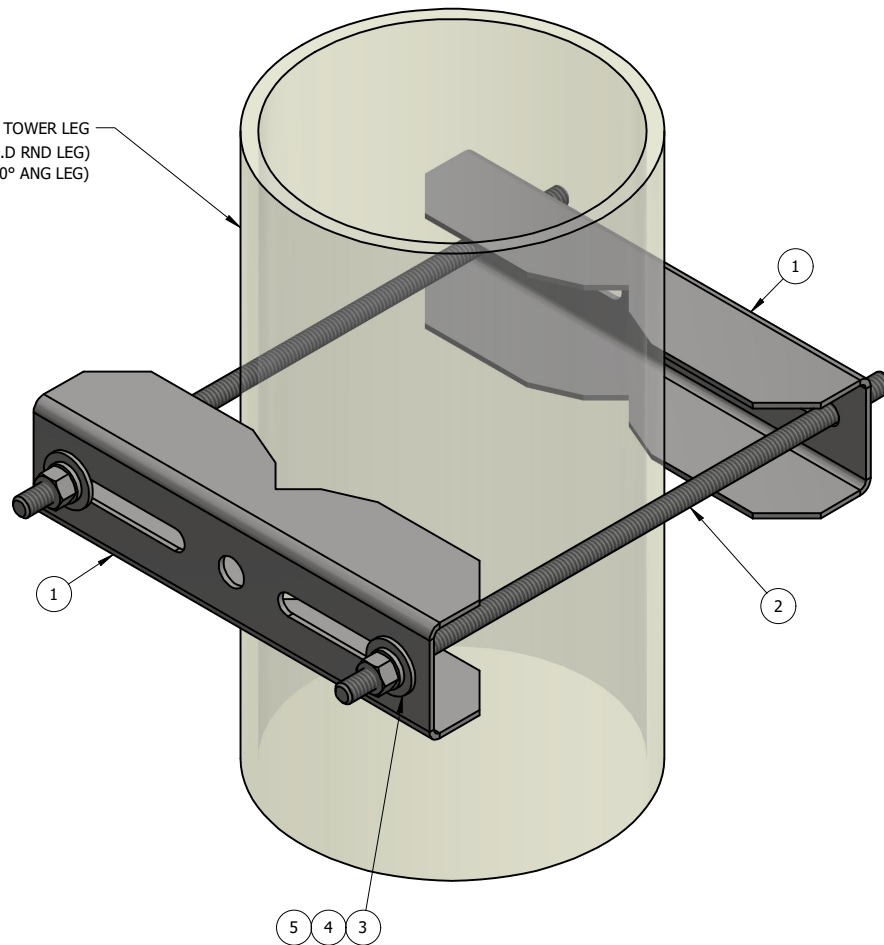


EXISTING TOWER LEG
 (FITS UP TO 6⁵/₈" O.D RND LEG)
 (FITS UP TO 4" 90° ANG LEG)



TOP VIEW

ITEM	PART #	QTY	DESCRIPTION	LENGTH	FINISH	UNIT WT
1	CA2000-6.01	2	12 GA SHEET METAL		HDG	1.28
2	TR38-12	2	3/8" x 12" A36 HDG ALL-THREAD	1'		0.38
3	27-5010-005	4	3/8 A36 HDG FLAT WASHER			0.01
4	27-5020-005	4	3/8 HDG LOCK WASHER			0.01
5	27-5030-005	4	3/8" HDG HEX NUT			0.02

THIS DESIGN AND INFORMATION CONTAINED ON THIS PRINT IS THE PROPERTY OF VALLEY FAB CORPORATION. ANY REPRODUCTION, DUPLICATION OR TRANSFER OF THE PROPRIETARY CONTENT IS PROHIBITED WITHOUT WRITTEN PERMISSION.

STANDARD TOLERANCES:

(UNLESS OTHERWISE NOTED)

FRACTIONS ±1/16"
 DECIMALS ±0.01"
 ANGLES ±0.5°

NEWAVE
 TOWER COMPONENTS. 503-792-3739
 10910 PORTLAND RD. BROOKS, OR 97305

TOTAL WT: 3.45 LB

QTY:

FINISH: HDG

JOB #:

TITLE:	UNIVERSAL CLAMP MOUNT FOR 1-1/2" TO 6-5/8" RND OR UP TO 4" 90° ANG	DRAWN BY:	KY	DATE:	3/10/2023	CHK'D BY:	-
SERIES:	COAX SUPPORT	DRAWING NO.		CA2000-6			
SHEET: 1 OF 1							