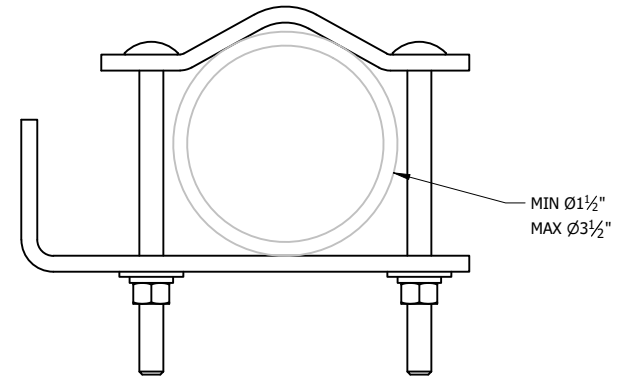
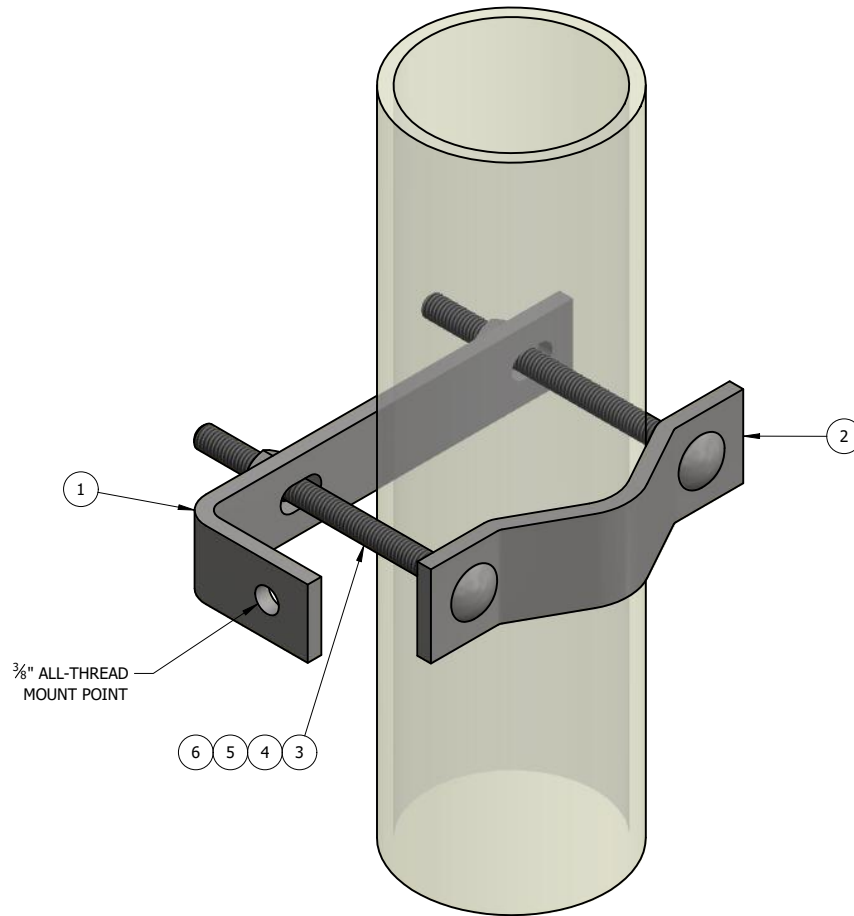


REV	BY	DESCRIPTION	DATE
A	KY	SEE MODEL I PROPERTIES/COMMENTS	10/11/2022



TOP VIEW

ITEM	PART #	QTY	DESCRIPTION	LENGTH	FINISH	UNIT WT
1	CS102.01	1	1/4" PLATE		HDG	0.74
2	AMCS-3.02	1	1/4" PLATE		HDG	0.61
3	27-4232-005	2	HDG - 3/8" X 5" A307 CARRAGE BOLT			0.18
4	27-5010-005	2	3/8 A36 HDG FLAT WASHER			0.01
5	27-5020-005	2	3/8 HDG LOCK WASHER			0.01
6	27-5030-005	2	3/8" HDG HEX NUT			0.02

THIS DESIGN AND INFORMATION CONTAINED ON THIS PRINT IS THE PROPERTY OF VALLEY FAB CORPORATION. ANY REPRODUCTION, DUPLICATION OR TRANSFER OF THE PROPRIETARY CONTENT IS PROHIBITED WITHOUT WRITTEN PERMISSION.

**STANDARD TOLERANCES:**  
(UNLESS OTHERWISE NOTED)  
FRACTIONS ±1/16"  
DECIMALS ±0.01"  
ANGLES ±0.5°

**NEWAVE**  
TOWER COMPONENTS. 503-792-3739  
10910 PORTLAND RD. BROOKS, OR 97305

TOTAL WT: 1.8 LB  
QTY:  
FINISH: HDG  
JOB #:

TITLE:	CABLE SUPPORT CLAMP KIT FITS 1-1/2" TO 3-1/2" O.D ROUND LEG	DRAWN BY:	KY	DATE:	9/28/2021	CHK'D BY:	-
SERIES:	COAX SUPPORT	DRAWING NO.		CS102			
SHEET: 1 OF 1							