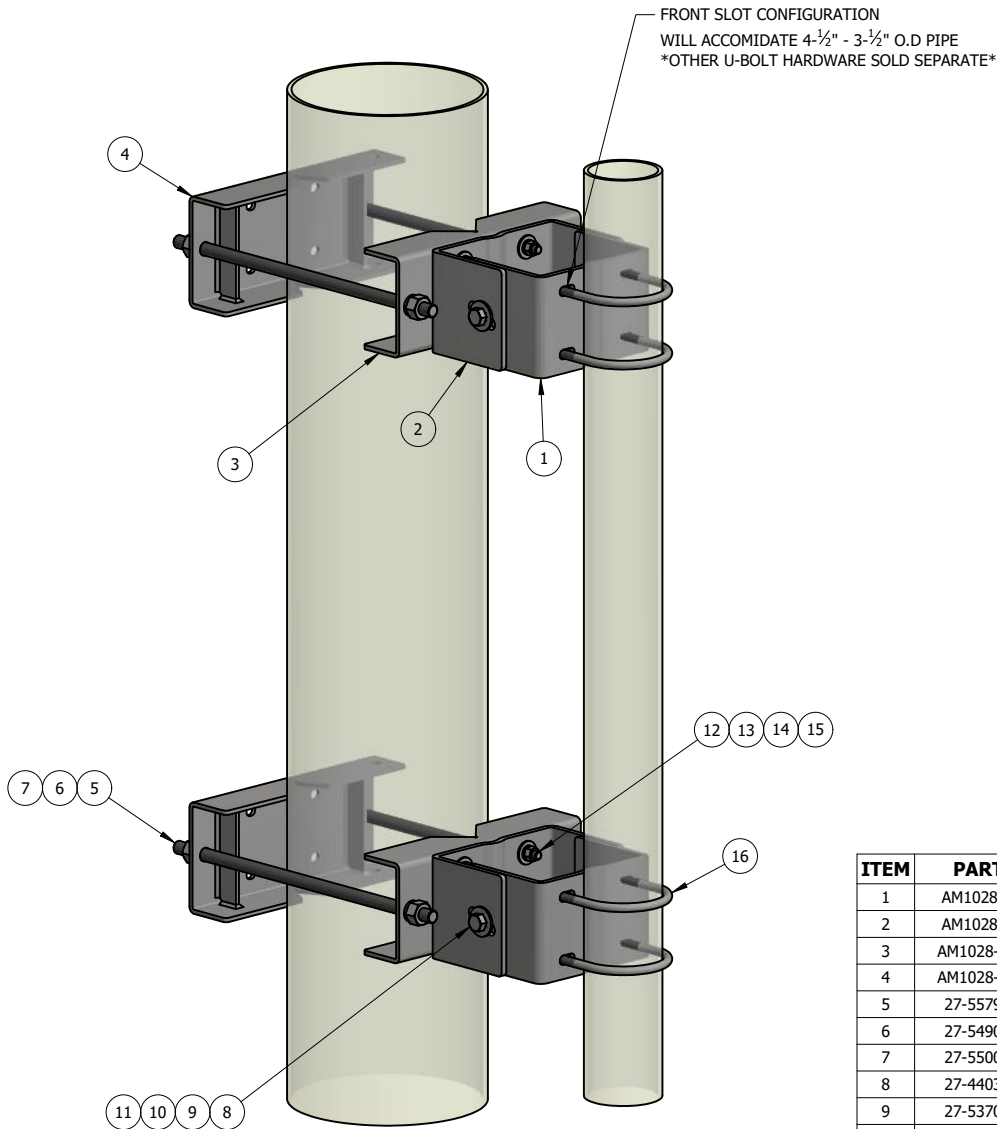
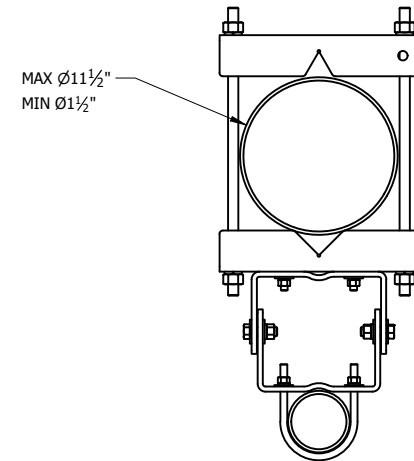


REV	BY	DESCRIPTION	DATE
B	KY	SEE MODEL I PROPERTIES/COMMENTS	3/26/2021



FRONT SLOT CONFIGURATION
 WILL ACCOMMODATE 4-1/2" - 3-1/2" O.D PIPE
 OTHER U-BOLT HARDWARE SOLD SEPARATE



TOP VIEW

NOTE: 3" TAPER ADJUSTMENT AVAILABLE BETWEEN TOP AND BOTTOM BRACKET

ITEM	PART #	QTY	DESCRIPTION	LENGTH	FINISH	UNIT WT
1	AM1028-U.01	2	3/8" PLATE		HDG	12.15
2	AM1028-U.02	2	3/8" PLATE		HDG	12.61
3	AM1028-8U.01	2	INNER ADJUSTABLE CHANNEL CLAMP WELDMENT		HDG	12.14
4	AM1028-8U.04	2	OUTER ADJUSTABLE CHANNEL CLAMP WELDMENT		HDG	13.17
5	27-5579-005	4	3/4" x 21" B7 HDG ALL-THREAD	1'-9"		2.63
6	27-5490-005	8	3/4 HDG LOCK WASHER			0.04
7	27-5500-005	8	3/4 HDG HEAVY HEX NUT			0.21
8	27-4403-005	4	5/8" x 2" GR.5 HDG BOLT			0.27
9	27-5370-005	8	5/8 A36 HDG FLAT WASHER			0.08
10	27-5380-005	4	5/8 HDG LOCK WASHER			0.03
11	27-5391-005	4	5/8" HDG HEX NUT			0.08
12	27-4302-005	8	1/2" x 1 3/4" GR.5 HDG BOLT			0.15
13	27-5200-005	16	1/2 HDG FLAT WASHER			0.04
14	27-5210-005	8	1/2 HDG LOCK WASHER			0.01
15	27-5222-005	8	1/2 HDG HEX NUT			0.04
16	27-6140-005	4	GALV. 1/2" x 4 5/8" x 6 1/2" U-BOLT ASSEMBLY			1.10

THIS DESIGN AND INFORMATION CONTAINED ON THIS PRINT IS THE PROPERTY OF VALLEY FAB CORPORATION. ANY REPRODUCTION, DUPLICATION OR TRANSFER OF THE PROPRIETARY CONTENT IS PROHIBITED WITHOUT WRITTEN PERMISSION.

STANDARD TOLERANCES:
 (UNLESS OTHERWISE NOTED)
 FRACTIONS ±1/16"
 DECIMALS ±0.01"
 ANGLES ±0.5°

NEWAVE
 TOWER COMPONENTS. 503-792-3739
 10910 PORTLAND RD. BROOKS, OR 97305

TOTAL WT: 121.5 LB
 QTY:
 FINISH:
 JOB #:

TITLE:
UNIVERSAL ADJ. TAPERED PIPE MOUNT
1-1/2" TO 10-1/2" O.D. ROUND OR 6" ANGLE

DRAWN BY: JG DATE: 7/17/2018 CHK'D BY: KY

DRAWING NO. AM1028-8U

SERIES: TOWER ANTENNA MOUNT

SHEET: 1 OF 1