

ITEM	PART #	QTY	DESCRIPTION	LENGTH	FINISH	UNIT WT
1	AM1V.01	1	RIGHT, HD V-FRAME WELDMENT W/ RRU OPTION		HDG	81.85
2	AM1V.09	1	LEFT, HD V-FRAME WELDMENT W/ RRU OPTION		HDG	81.85
3	AM1V.10	2	1/2" PLATE		HDG	9.33
4	AM1V.11	2	HD UNIVERSAL CHANNEL CLAMP WELDMENT		HDG	12.54
5	AM1V.14	2	HD UNIVERSAL CLAMP WELDMENT W/ ADJ. TAPER		HDG	28.05
6	AM1V.17	2	1/2" PLATE		HDG	18.87
7	AM1030-23M.02	2	STIFF ARM HALF CLAMP WELDMENT		HDG	0.92
8	AM1030-23M.03	2	1/4" PLATE		SEE W/O	0.58
9	AM1031.03	4	1/4" PLATE		HDG	1.79
10	AM1031HD.03	4	3/16" PLATE		HDG	1.58
11	P278-126	2	2 1/2" STD PIPE	10'-6"	HDG	60.89
12	P23-126	2	2" STD PIPE	10'-6"	HDG	38.40
13	27-5578-005	4	3/4" x 18" B7 HDG ALL-THREAD	1'-6"		2.25
14	27-5490-005	8	3/4 HDG LOCK WASHER			0.04
15	27-5501-005	8	3/4" HDG HEX NUT			0.14
16	27-4404-005	10	5/8 x 2 1/4 GR.5 HDG BOLT			0.29
17	27-4403-005	10	5/8 x 2 GR.5 HDG BOLT			0.27
18	27-5370-005	10	HDG - 5/8" FLAT WASHER, USS			0.08
19	27-5380-005	20	5/8 HDG LOCK WASHER			0.03
20	27-5391-005	20	5/8" HDG HEX NUT			0.08
21	TR12-10	4	1/2" x 10" A36 HDG ALL-THREAD	10"		0.56
22	27-4310-005	4	GALV. 1/2" x 4" GR.5 FULL THREADED BOLT			0.27
23	27-4300-005	4	1/2" x 1 1/4" GR.5 HDG BOLT			0.12
24	27-5200-005	16	HDG - 1/2" FLAT WASHER, USS			0.04
25	27-5210-005	16	1/2 HDG LOCK WASHER			0.01
26	27-5222-005	16	1/2 HDG HEX NUT			0.04
27	27-6080-005	8	GALV. 1/2" x 3" x 5" GR-5 U-BOLT ASSEMBLY			0.89
28	27-6050-005	8	GALV. 3/8" x 2-1/2" x 4" U-BOLT ASSEMBLY			0.40

THIS DESIGN AND INFORMATION CONTAINED ON THIS PRINT IS THE PROPERTY OF VALLEY FAB CORPORATION. ANY REPRODUCTION, DUPLICATION OR TRANSFER OF THE PROPRIETARY CONTENT IS PROHIBITED WITHOUT WRITTEN PERMISSION.

**STANDARD TOLERANCES:**  
(UNLESS OTHERWISE NOTED)  
FRACTIONS ±1/16"  
DECIMALS ±0.01"  
ANGLES ±0.5°

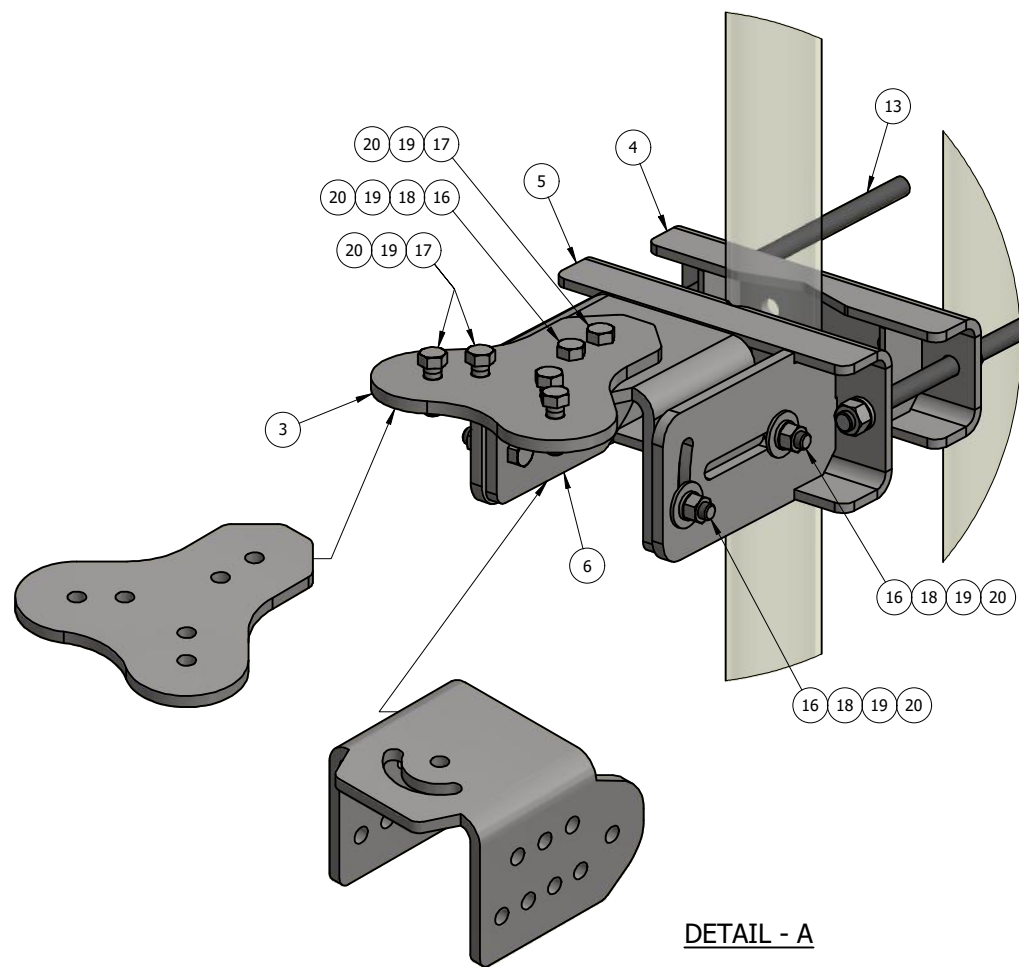
**NEWAVE**  
TOWER COMPONENTS, 503-792-3739  
10910 PORTLAND RD. BROOKS, OR 97305

TOTAL WT: 550.9 LB  
QTY:  
FINISH:  
JOB #:

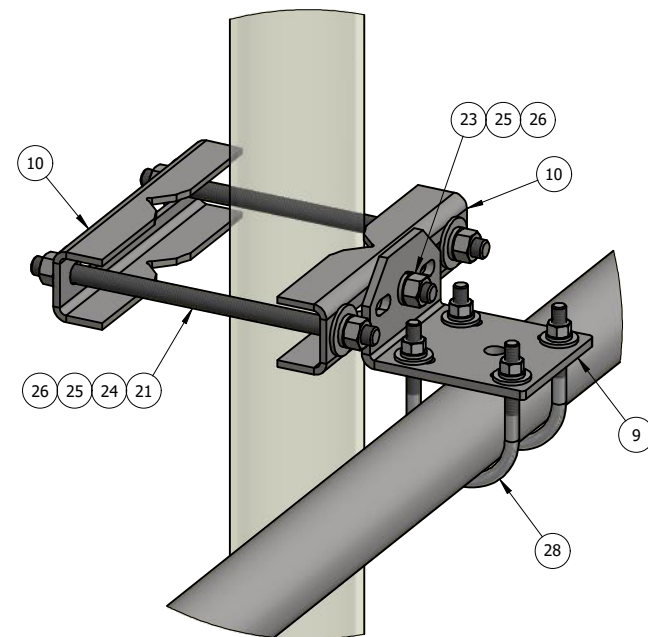
TITLE: 10'-6" FACE, V-FRAME, ADJ. TAPER, DBL STIFF-ARM FITS 1-1/2" TO 10-1/2" O.D ROUND LEG

SERIES: TOWER ANTENNA MOUNT SHEET: 1 OF 3

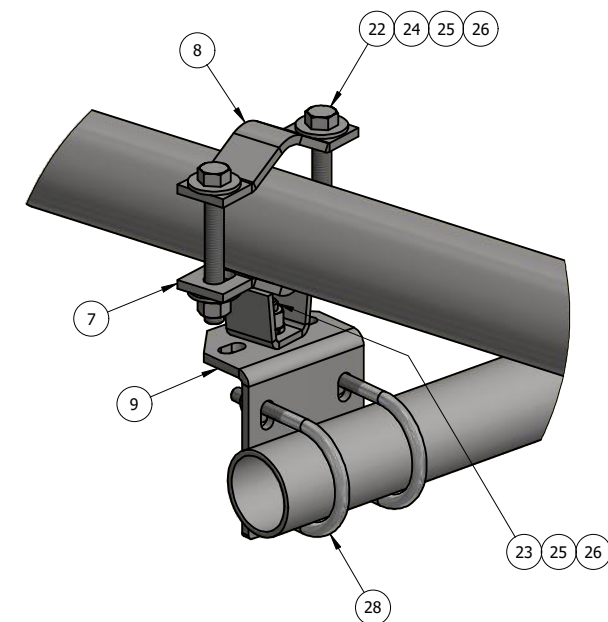
DRAWN BY: KY DATE: 1/27/2022 CHK'D BY: KY  
DRAWING NO. AM1V10HD



**DETAIL - A**  
TOWER CLAMP  
CONNECTION



**DETAIL - B**  
STIFF ARM  
TOWER LEG  
CONNECTION



**DETAIL - C**  
STIFF ARM  
PIPE FACE  
CONNECTION

ITEM	PART #	QTY	DESCRIPTION	LENGTH	FINISH	UNIT WT
1	AM1V.01	1	RIGHT, HD V-FRAME WELDMENT W/ RRU OPTION		HDG	81.85
2	AM1V.09	1	LEFT, HD V-FRAME WELDMENT W/ RRU OPTION		HDG	81.85
3	AM1V.10	2	1/2" PLATE		HDG	9.33
4	AM1V.11	2	HD UNIVERSAL CHANNEL CLAMP WELDMENT		HDG	12.54
5	AM1V.14	2	HD UNIVERSAL CLAMP WELDMENT W/ ADJ. TAPER		HDG	28.05
6	AM1V.17	2	1/2" PLATE		HDG	18.87
7	AM1030-23M.02	2	STIFF ARM HALF CLAMP WELDMENT		HDG	0.92
8	AM1030-23M.03	2	1/4" PLATE		SEE W/O	0.58
9	AM1031.03	4	1/4" PLATE		HDG	1.79
10	AM1031HD.03	4	3/16" PLATE		HDG	1.58
11	P278-126	2	2 1/2" STD PIPE	10'-6"	HDG	60.89
12	P23-126	2	2" STD PIPE	10'-6"	HDG	38.40
13	27-5578-005	4	3/4" x 18" B7 HDG ALL-THREAD	1'-6"		2.25
14	27-5490-005	8	3/4 HDG LOCK WASHER			0.04
15	27-5501-005	8	3/4" HDG HEX NUT			0.14
16	27-4404-005	10	5/8 x 2 1/4 GR.5 HDG BOLT			0.29
17	27-4403-005	10	5/8 x 2 GR.5 HDG BOLT			0.27
18	27-5370-005	10	HDG - 5/8" FLAT WASHER, USS			0.08
19	27-5380-005	20	5/8 HDG LOCK WASHER			0.03
20	27-5391-005	20	5/8" HDG HEX NUT			0.08
21	TR12-10	4	1/2" x 10" A36 HDG ALL-THREAD	10"		0.56
22	27-4310-005	4	GALV. 1/2" x 4" GR.5 FULL THREADED BOLT			0.27
23	27-4300-005	4	1/2" x 1 1/4" GR.5 HDG BOLT			0.12
24	27-5200-005	16	HDG - 1/2" FLAT WASHER, USS			0.04
25	27-5210-005	16	1/2 HDG LOCK WASHER			0.01
26	27-5222-005	16	1/2 HDG HEX NUT			0.04
27	27-6080-005	8	GALV. 1/2" x 3" x 5" GR-5 U-BOLT ASSEMBLY			0.89
28	27-6050-005	8	GALV. 3/8" x 2-1/2" x 4" U-BOLT ASSEMBLY			0.40

THIS DESIGN AND INFORMATION CONTAINED ON THIS PRINT IS THE PROPERTY OF VALLEY FAB CORPORATION. ANY REPRODUCTION, DUPLICATION OR TRANSFER OF THE PROPRIETARY CONTENT IS PROHIBITED WITHOUT WRITTEN PERMISSION.

**STANDARD TOLERANCES:**  
(UNLESS OTHERWISE NOTED)  
FRACTIONS ±1/16"  
DECIMALS ±0.01"  
ANGLES ±0.5°

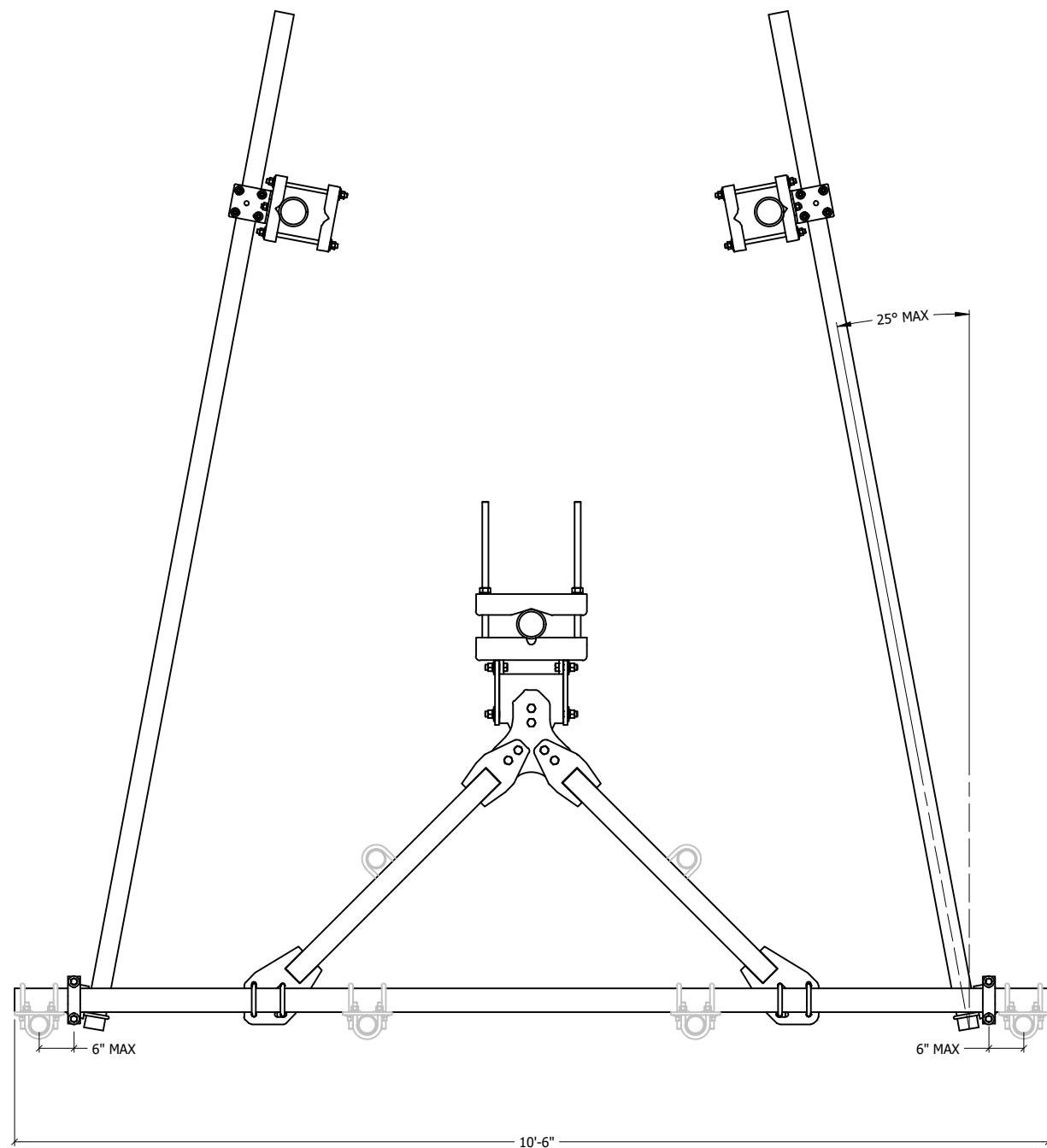
**NEWAVE**  
TOWER COMPONENTS, 503-792-3739  
10910 PORTLAND RD. BROOKS, OR 97305

TOTAL WT: 550.9 LB  
QTY:  
FINISH:  
JOB #:

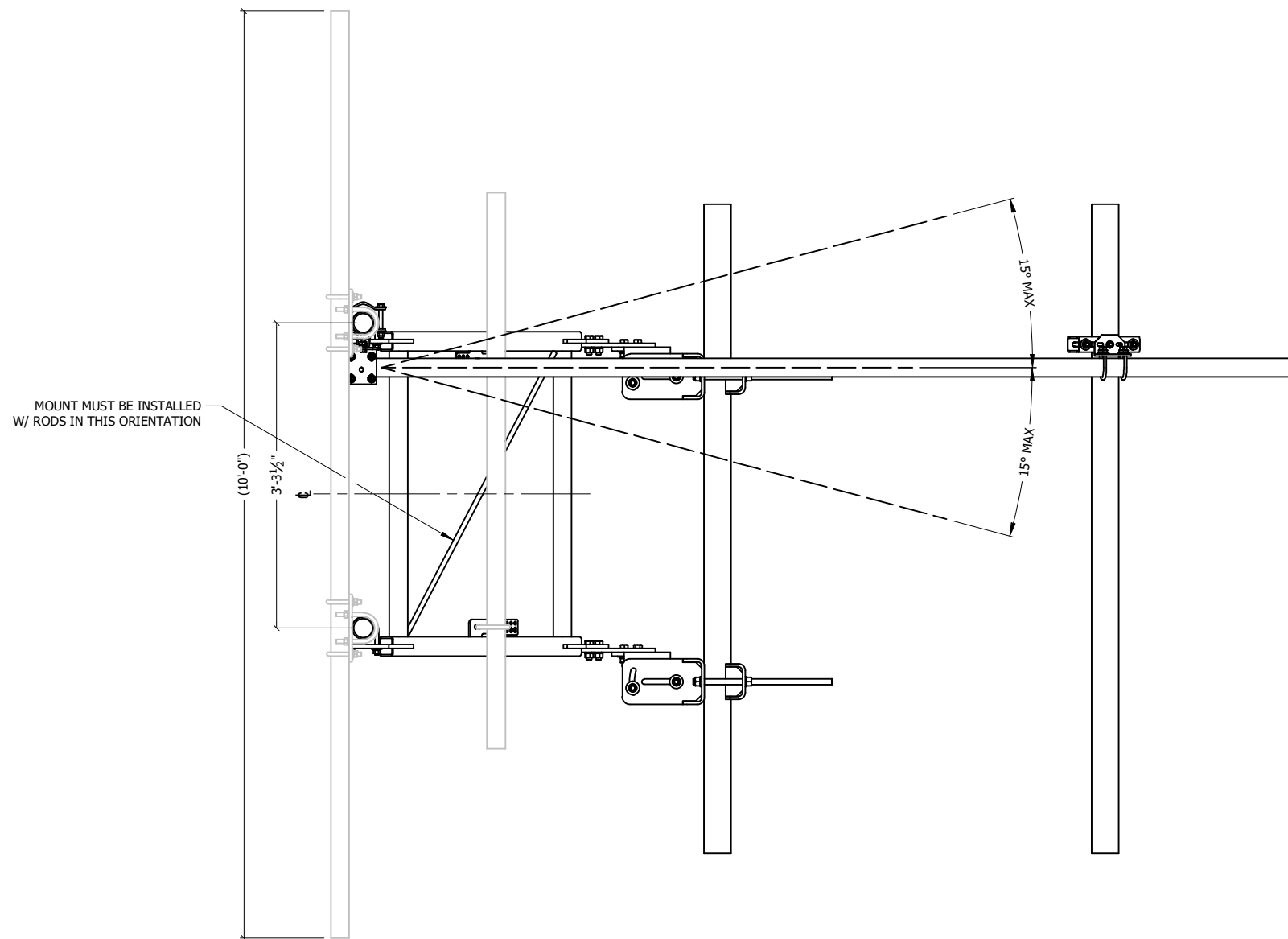
TITLE: 10'-6" FACE, V-FRAME, ADJ. TAPER, DBL STIFF-ARM FITS 1-1/2" TO 10-1/2" O.D ROUND LEG

SERIES: TOWER ANTENNA MOUNT SHEET: 2 OF 3

DRAWN BY: KY DATE: 1/27/2022 CHK'D BY: KY  
DRAWING NO. AM1V10HD



TOP VIEW



MOUNT MUST BE INSTALLED  
W/ RODS IN THIS ORIENTATION

SIDE VIEW

THIS DESIGN AND INFORMATION CONTAINED ON THIS PRINT IS THE PROPERTY OF VALLEY FAB CORPORATION. ANY REPRODUCTION, DUPLICATION OR TRANSFER OF THE PROPRIETARY CONTENT IS PROHIBITED WITHOUT WRITTEN PERMISSION.

**STANDARD TOLERANCES:**  
(UNLESS OTHERWISE NOTED)  
FRACTIONS ±1/16"  
DECIMALS ±0.01"  
ANGLES ±0.5°



TOWER COMPONENTS, 503-792-3739  
10910 PORTLAND RD. BROOKS, OR 97305

TOTAL WT: 550.9 LB

QTY:

FINISH:

JOB #:

TITLE:  
10'-6" FACE, V-FRAME, ADJ. TAPER, DBL STIFF-ARM  
FITS 1-1/2" TO 10-1/2" O.D ROUND LEG

SERIES: TOWER ANTENNA MOUNT

DRAWN BY:	DATE:	CHK'D BY:
KY	1/27/2022	KY

DRAWING NO.

AM1V10HD

SHEET: 3 OF 3