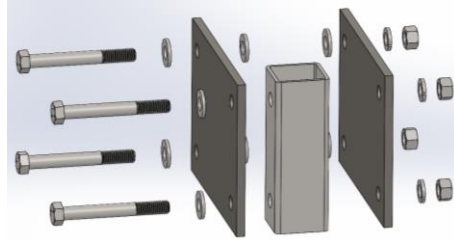


115-345

Welded Channel Mount Install

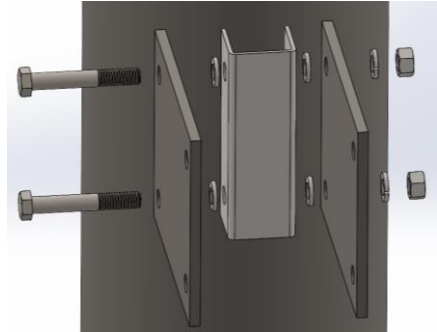
Contents:

- (2) Extension Plates (115-345-DB-C)
- (1) Simulated Channel (115-336-C)
- (4) Bolts (110-164)
- (4) Nuts (110-153)
- (12) Washers (110-159&115-410G)



1. First step of the install is to attach the extended mounting plates to the welded channel of the pole. Use the provided hardware and bolt the plates, one on either side of the channel, to the pole. Make sure you insert a washer between the channel and the plate on both bolts on either side. This helps space the plates out from the channel for later.

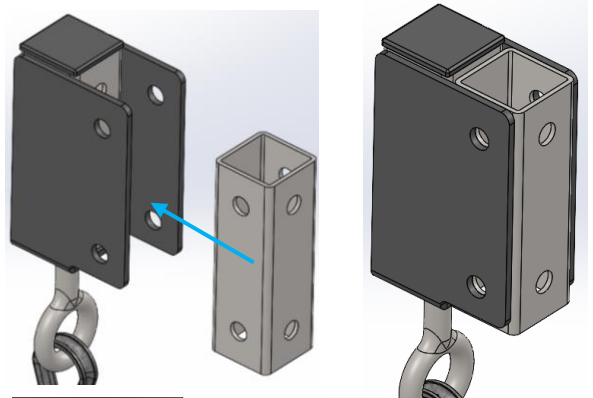
- 4 washers total should've been used to space the plates from the channel.
- Make sure both the bolts have a washer between bolt head and plate, and lock washer and nut on end.
- Tighten them most of the way, but not all the way just yet.



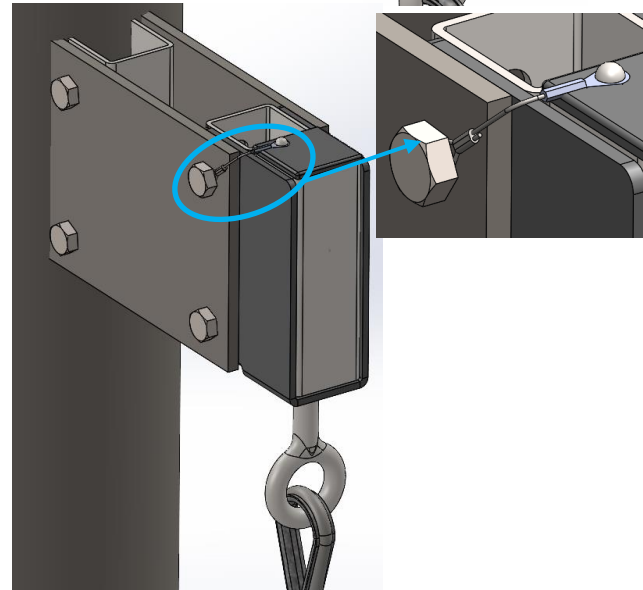
2. Second step is to install the simulated channel to the head assembly. You will slide it into the head assembly, making sure the bolt holes line up, but do not install the bolts in this step.

3. Third, in the opening between the extension tabs, install the head assembly and simulated channel. Make sure the bolt holes line up and insert the bolts through.

- Make sure you install the cap lanyard around the top bolt before inserting it through. This lanyard MUST be attached prior to moving on.
- Make sure both the bolts have a washer between bolt head and plate, and lock washer and nut on end.



4. Next, double check everything. You should have an extension plate on EITHER side of the welded channel of the pole, with washers between them. At the end of the plates should be your head assembly, with the simulated channel between the 2 extended tabs of it. Finally, the extension plates should be on the outside of both the head assembly and simulated channel.



5. So long as all your work is correct and matches the pictures, you can tighten down your hardware. Make sure to tighten all the nuts/bolts to approx. 45 ft-lbs and mark them.