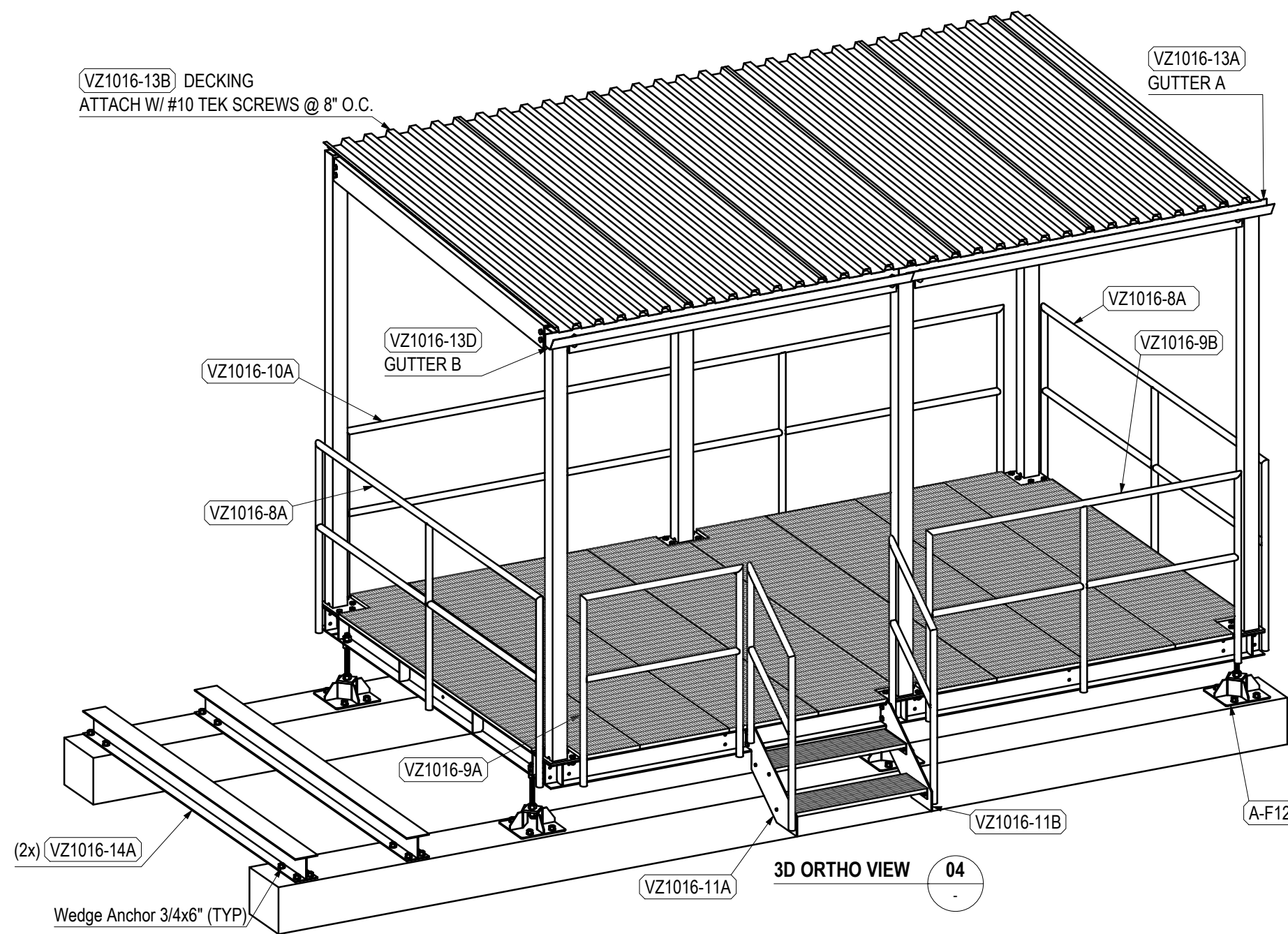


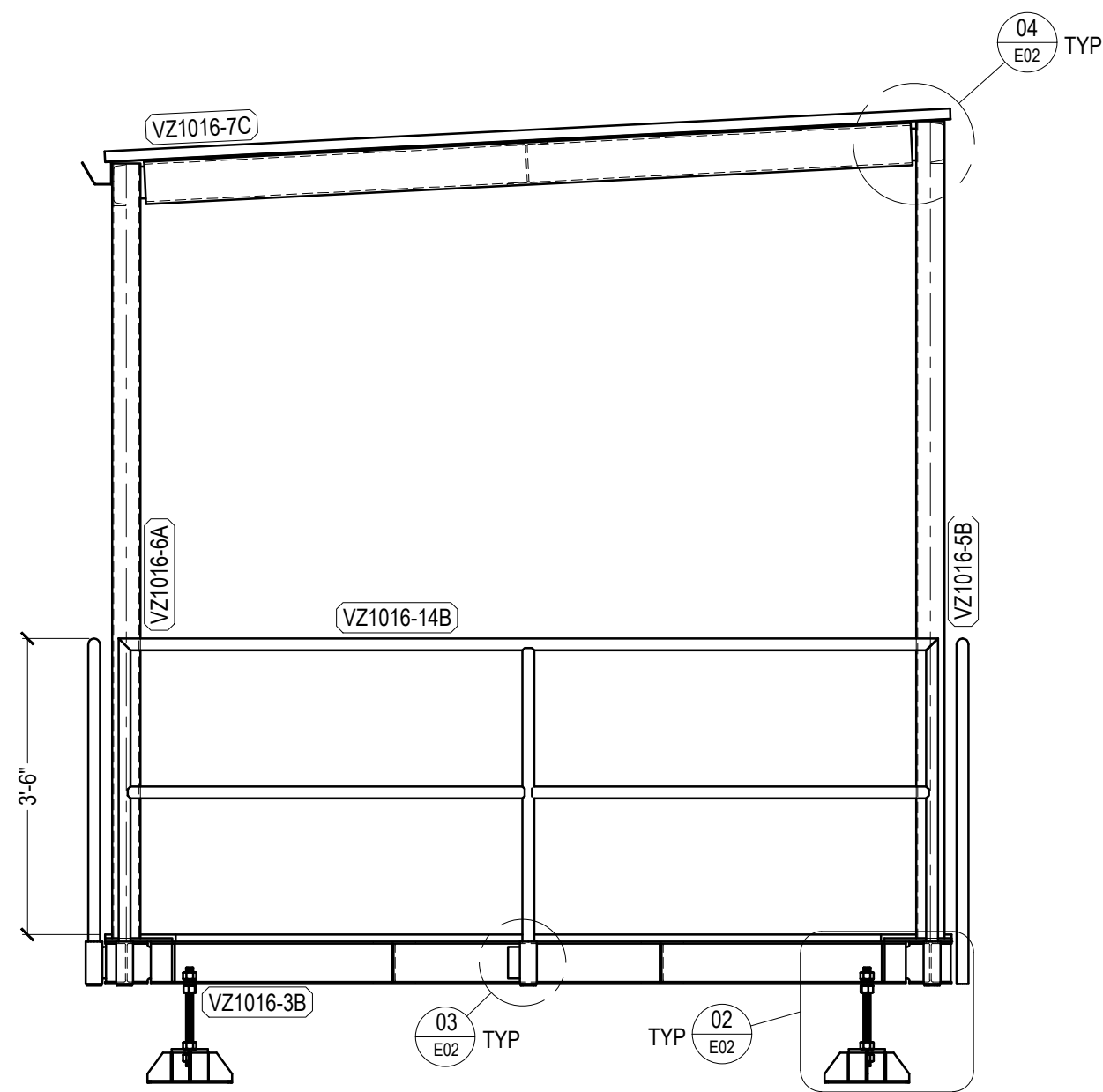
PLATFORM PLAN VIEW 01 BAR GRATING NOT SHOWN FOR CLARITY

VZ1016-13B) DECKING
ATTACH W/ #10 TEK SCREWS @ 8" O.C.

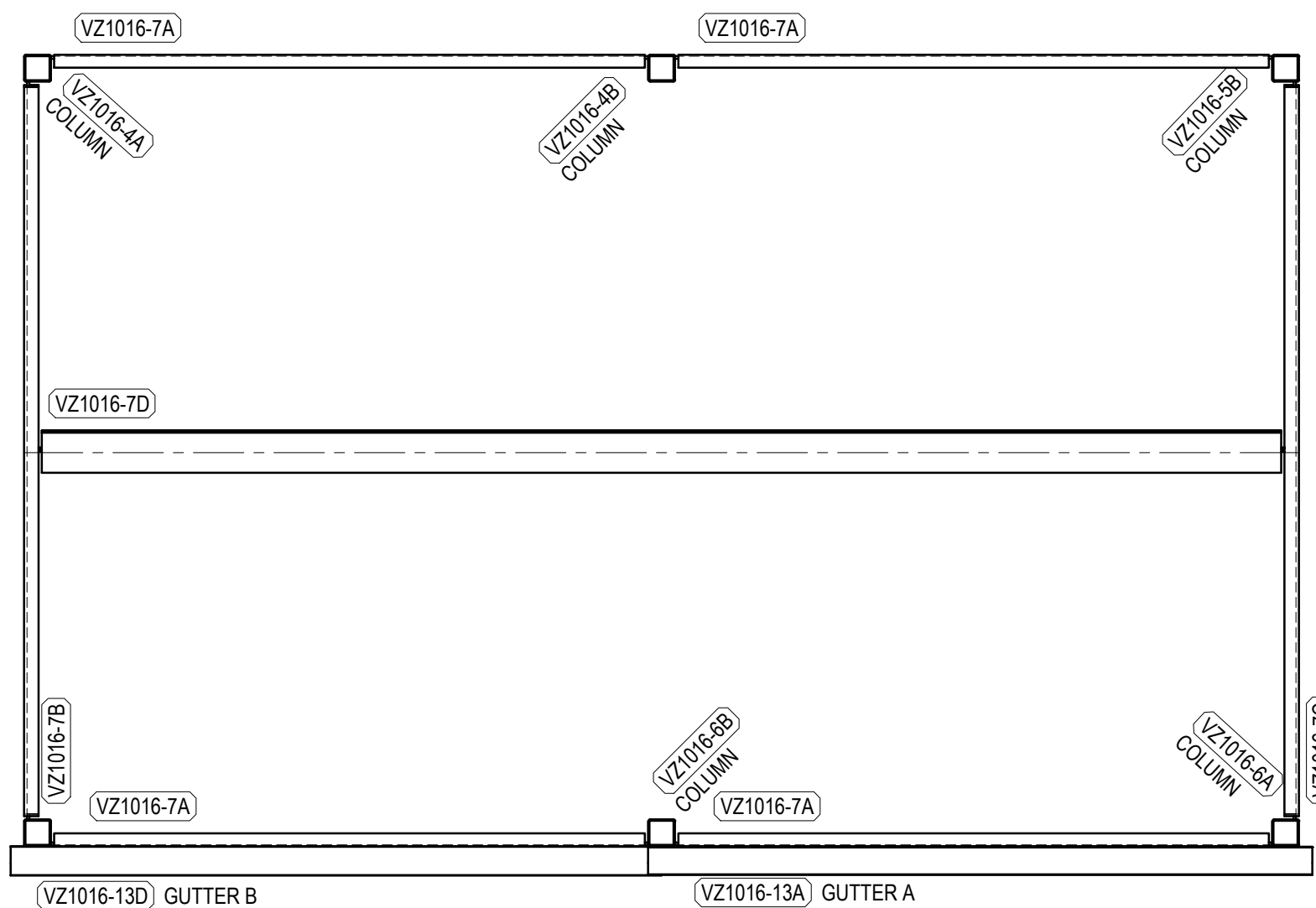


3D ORTHO VIEW 04

Mark	Qty	Description	Length	Part Lbs
-10003	6	NEWAVE ADJUSTABLE FOOT	1'-4 5/16"	89
-10001	72	#10 x 1-1/4" TEK Screw	0"	0
VZ1016-1A	1	BEAM	16'-0"	251.688
VZ1016-1B	1	BEAM	16'-0"	254.593
VZ1016-2A	1	BEAM	8'-11"	148.581
VZ1016-2B	1	BEAM	8'-11"	144.553
VZ1016-3A	4	BEAM	7'-2"	107.425
VZ1016-3B	1	BEAM	8'-11"	144.553
VZ1016-4A	1	COLUMN	9'-7 7/8"	104.213
VZ1016-4B	1	COLUMN	9'-7 7/8"	101.93
VZ1016-5A	1	COLUMN	9'-1 7/8"	99.503
VZ1016-5B	1	COLUMN	9'-7 7/8"	104.224
VZ1016-6A	1	COLUMN	9'-1 7/8"	99.503
VZ1016-6B	1	COLUMN	9'-1 7/8"	97.22
VZ1016-7A	4	BEAM	7'-4"	60.059
VZ1016-7B	1	BEAM	9'-0 13/16"	120.118
VZ1016-7C	1	BEAM	9'-0 13/16"	120.118
VZ1016-7D	1	BEAM	15'-4 11/16"	230.769
VZ1016-8A	2	GUARDRAIL	9'-8 1/16"	70.186
VZ1016-8B	4	GUARDRAIL SLEEVE	6 1/4"	-
VZ1016-8C	11	GUARDRAIL SLEEVE	6 1/4"	-
VZ1016-9A	1	GUARDRAIL	4'-1"	33.94
VZ1016-9B	1	GUARDRAIL	7'-0 11/16"	58.206
VZ1016-10A	1	GUARDRAIL	14'-9 11/16"	102.236
VZ1016-11A	1	STAIRS	2'-8 7/16"	44.886
VZ1016-11B	1	STAIRS	2'-8 7/16"	44.918
VZ1016-12A	2	BAR GRATING	2'-11 3/4"	22.484
VZ1016-12B	2	BAR GRATING	10'-0"	146.266
VZ1016-12C	2	BAR GRATING	10'-0"	141.139
VZ1016-12D	4	BAR GRATING	10'-0"	149.987
VZ1016-13A	1	GUTTER SIDE A	8'-3"	15.316
VZ1016-13B	5	ROOF DECKING	10'-0"	51.359
VZ1016-13C	1	ROOF DECKING	10'-0"	13.443
VZ1016-13D	1	GUTTER SIDE B	8'-1"	15.49
VZ1016-14A	2	BEAM	9'-2"	137.193



ELEVATION VIEW 02



ROOF PLAN VIEW 03 DECKING NOT SHOWN FOR CLARITY

Quantity	Description	Length	Coating	Assembly
40	Wedge Anchor 3/4x6"	6"	Galvanized	NaW
10	A325 5/8 x 2	2"	Galvanized	NaWL
50	A325 5/8 x 1 3/4	1 3/4"	Galvanized	NaWL
24	A325 5/8 x 1 3/4	1 3/4"	Galvanized	NaL
30	A325 1/2 x 1 1/2	1 1/2"	Galvanized	NaWL
8	A307 - 3/8 x 1 1/4	1 1/4"	Galvanized	NaWL

ATTENTION

THESE ARE 100% WORKING DRAWINGS AND ARE INTENDED FOR FABRICATION UPON RELEASE FROM THE GENERAL CONTRACTOR. THEREFORE, ALL REQUIRED APPROVAL STAMPS MUST APPEAR ON ALL SHOP DRAWINGS OR WORK WILL NOT PROCEED. THESE DRAWINGS ARE TO THE BEST INTERPRETATION OF THE CONTRACT DOCUMENTS. THEREFORE ANY ERRORS ON THE ORIGINAL DRAWINGS ARE NOT THE FAULT OF THE DETAILER OR STEEL FABRICATOR. IT'S THE RESPONSIBILITY OF THE APPROVER(S) TO VERIFY AND CORRECT ANY DIMENSIONS, MATERIALS, AND SECTION VIEWS. IF MATERIALS AND DIMENSIONS ARE NOT CORRECTED IN THE APPROVAL PROCESS WE ASSUME THAT THEY ARE CORRECT AND ARE NOT LIABLE FOR ANY EXPENSE FOR CORRECTIONS THEREAFTER.

THIS DRAWING CONTAINS PROPRIETARY INFORMATION AND MAY NOT BE COPIED, REPRODUCED OR DISTRIBUTED WITHOUT THE CONSENT OF NEWAVE TOWER COMPONENTS.
© 2015 Newave Tower Components

NEWAVE NEWAVE TOWER COMPONENTS
10910 PORTLAND RD. NE. BROOKS, OR 97305
PH: (503) 792-3739 FAX: (503) 792-3738
NEWAVETC.COM

PROJECT: NEWAVE TOWER COMPONENTS
ADJUSTABLE FOOT PLATFORM
10'-0" x 16'-0" W/ CANOPY ASSEMBLY DRAWINGS

Date	BY	Description	REV.
2/18/2016	JG	REVISED HANDRAIL CONNECTION	C
11/11/2015	CJW	FINAL FAB DRAWINGS	B
10/15/2015	CJW	REMOVED KICK RAIL	A

STANDARD TOLERANCES:
FRACTIONAL ±1/16", DECIMALS ±.005", ANGLES ±.5°

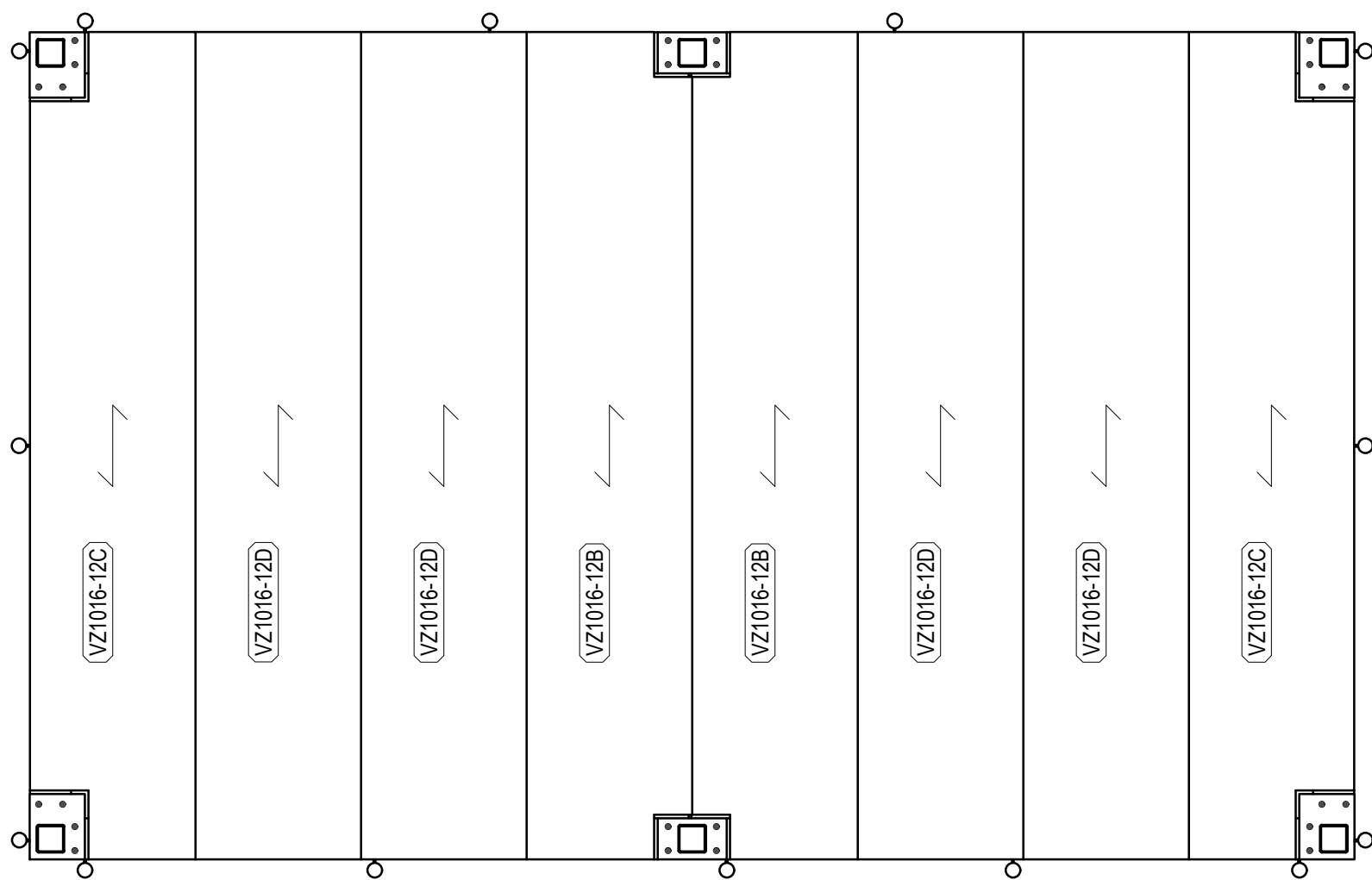
STANDARD GRADES & WELDING ELECTRODE (UNO):
PLATE:A36, ANGLE:A36, C-SHAPE:A36 WF:A992, HSS:A500B, PIPE:A53B, E70XX

CHK'D BY: DATE: SCALE: FINISH: Galvanized

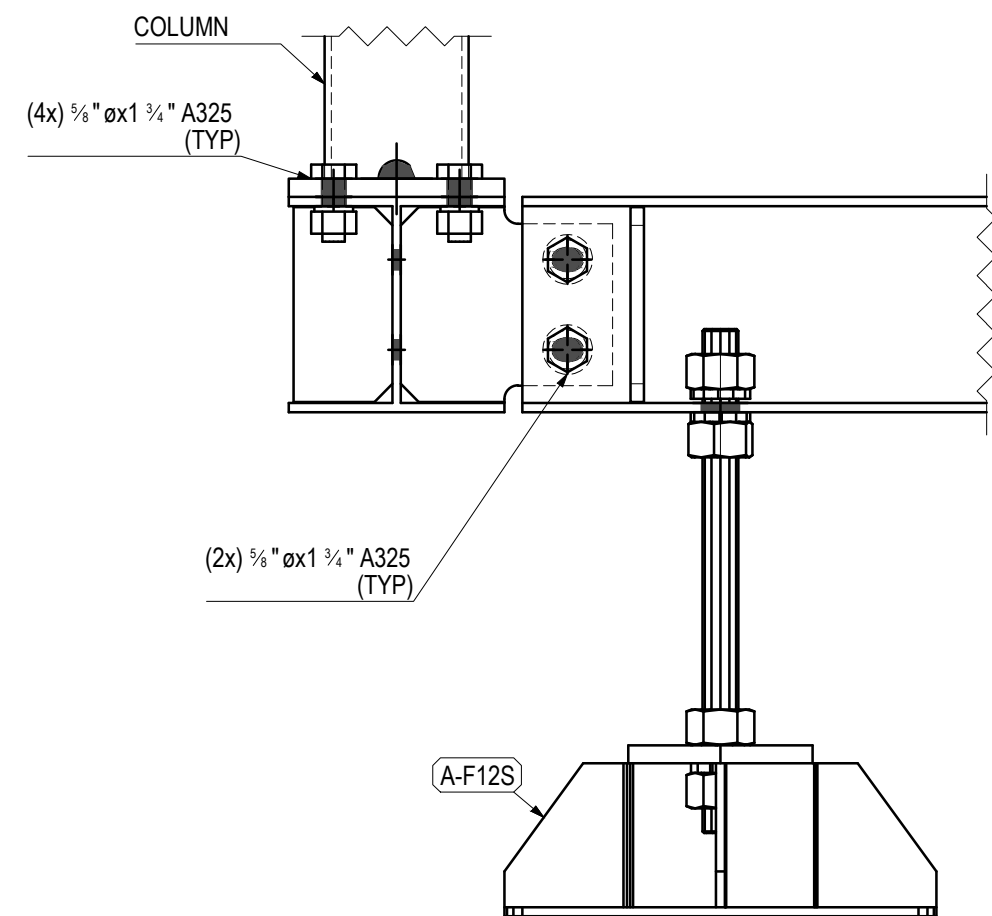
CJW 11/10/2015 NTS

DRAWN BY: DATE: PROJECT No: DRAWING No: REV.

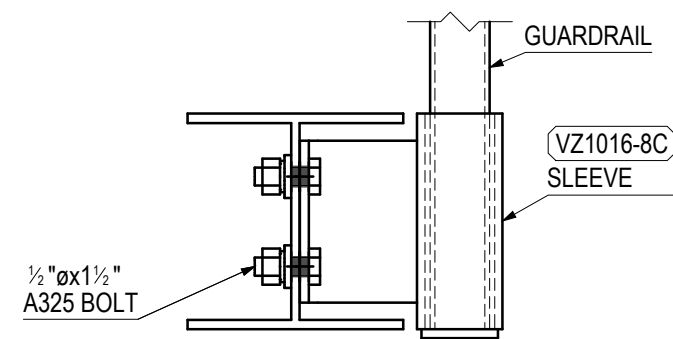
CJW 11/11/2015 VZ1016 E01



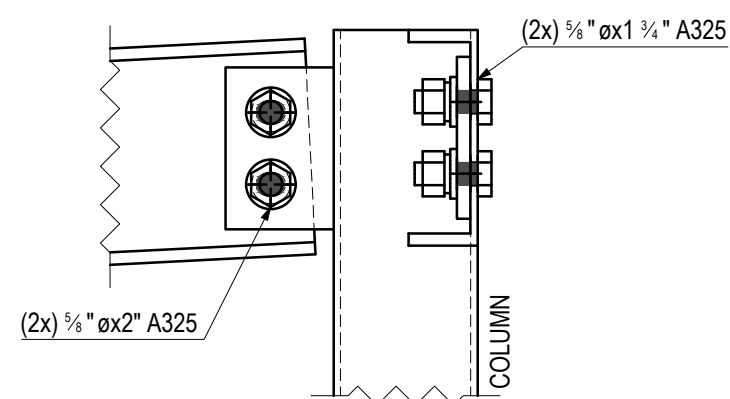
BAR GRATING PLAN VIEW 01



SECTION 02 FOOT ELEVATION W6x15 TO W6x15 CONN.



SECTION 03 GUARDRAIL POST CONN.



SECTION 04 COLUMN TO C6x13 CONN. COLUMN TO C6x8.2

ATTENTION

THESE ARE 100% WORKING DRAWINGS AND ARE INTENDED FOR FABRICATION UPON RELEASE FROM THE GENERAL CONTRACTOR. THEREFORE, ALL REQUIRED APPROVAL STAMPS MUST APPEAR ON ALL SHOP DRAWINGS OR WORK WILL NOT PROCEED. THESE DRAWINGS ARE TO THE BEST INTERPRETATION OF THE CONTRACT DOCUMENTS. THEREFORE ANY ERRORS ON THE ORIGINAL DRAWINGS ARE NOT THE FAULT OF THE DETAILER OR STEEL FABRICATOR. IT'S THE RESPONSIBILITY OF THE APPROVER(S) TO VERIFY AND CORRECT ANY DIMENSIONS, MATERIALS, AND SECTION VIEWS. IF MATERIALS AND DIMENSIONS ARE NOT CORRECTED IN THE APPROVAL PROCESS WE ASSUME THAT THEY ARE CORRECT AND ARE NOT LIABLE FOR ANY EXPENSE FOR CORRECTIONS THEREAFTER.

THIS DRAWING CONTAINS PROPRIETARY INFORMATION AND MAY NOT BE COPIED, REPRODUCED OR DISTRIBUTED WITHOUT THE CONSENT OF NEWAVE TOWER COMPONENTS.
© 2015 Newave Tower Components.

NEWAVE NEWAVE TOWER COMPONENTS
10910 PORTLAND RD. NE. BROOKS, OR 97305
PH: (503) 792-3739 FAX: (503) 792-3738
NEWAVETC.COM

PROJECT: NEWAVE TOWER COMPONENTS
ADJUSTABLE FOOT PLATFORM
10'-0" x 16'-0" W/ CANOPY ASSEMBLY DRAWINGS

Date	BY	Description	REV.
2/18/2016	JG	REVISED HANDRAIL CONNECTION	C
11/11/2015	CJW	FINAL FAB DRAWINGS	B
10/15/2015	CJW	REMOVED KICK RAIL	A

STANDARD TOLERANCES:
FRACTIONAL ±1/16", DECIMALS ±.005", ANGLES ±5°

STANDARD GRADES & WELDING ELECTRODE (UNO):
PLATE:A36, ANGLE:A36, C-SHAPE:A36 WF:A992, HSS:A500B, PIPE:A53B, E70XX

CHK'D BY: C.J.W. DATE: 11/10/2015 SCALE: 1/2"=1'-0", 3/16"=1" FINISH: Galvanized,None

DRAWN BY: C.J.W. DATE: 2/19/2016 PROJECT No: VZ1016 DRAWING No: E02 REV: C