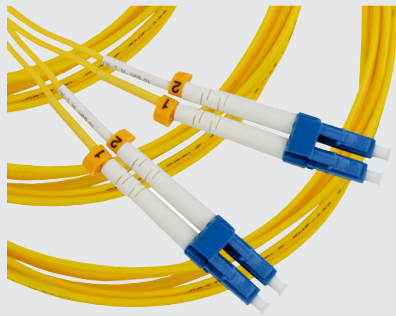


# SINGLEMODE DUPLEX FIBER OPTIC PATCH CABLE



## DESCRIPTION:

Singlemode Duplex Fiber  
Optic Patch Cord, LC, SC or ST  
Connectors, UPC Polish, UL

## FEATURES:

- LC-LC, LC-SC, LC-ST, SC-ST, ST-ST Connector Configurations Available
- 1m/2m/3m/5m/7m/10m/15m Lengths Available
- Available In Standard or Custom Configurations
- 2.0mm Diameter
- Low Back Reflection and Insertion Loss
- PVC Jacket
- Ceramic Ferrule
- UL, RoHS Compliant

## TECHNICAL DATA

**Fiber Type:** 9/125 $\mu$ m

Polish UPC

**Buffer:** Kevlar

Overall Diameter 900 $\mu$ m

**Jacket :** PVC (OFNR-Rated)

Overall Diameter 2.0mm

## Mechanical Characteristics:

Attenuation @ 850nm(dB/km)	-
Attenuation @ 1310nm(dB/km)	-
Typical Insertion Loss	$\leq 0.15$ dB
Max Insertion Loss	$\leq 0.30$ dB
Max Return Loss	$\leq 0.50$ dB
Min Bandwidth @ 850nm(kHz/km)	-
Min Bandwidth @ 1310nm(kHz/km)	-
Maximum Tensile Load	100N/cm

## Jacket Print:

OPTICAL CABLE SMF-28e 9/125 2.0x4.1 OFNR RoHS UL  
(Cord Length Label Attached)

## Manufactured By:

Vertical Cable

