

900639-10

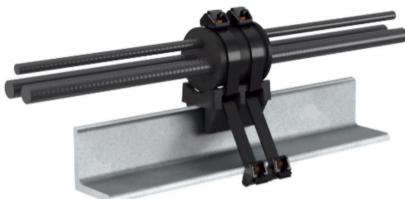
sales@newavetc.com
OR - (971) 239-4762
AZ - (623) 207-8439
WA - (253) 200-0420
MT - (406) 298-5660



SPECIFICATIONS

For patents see www.cf-pat.com

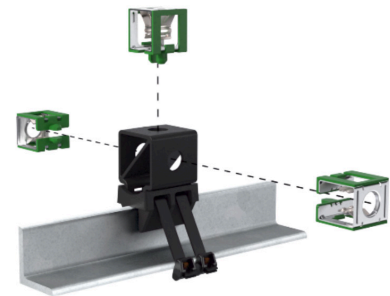
General	The PIM Shield Universal Base, Angle Adapter provides a low passive intermodulation method to secure a variety of cable sizes in high risk PIM zones. The Universal base can be used alone to secure bundles of cables or can be installed with an adapter to secure Snap-in hangers or Cable Support Blocks.
Mounting	Attach the PIM Shield Universal Base to existing structural angle members at the site (0.25" maximum flange thickness) using two PIM Shield Cable Straps (900443-16-50 or 900443-27-25) or equivalent.
System PIM performance	IM3 <-100 dBm when tested in accordance with IEC 62037-8, near field test, 2x 20W test tones, while subjected to dynamic stimulus
Material	UV stable, glass filled Nylon
Plastic Base Color	Black
Operating temperature	-40°C to +70°C
Case dimensions	15-inch x 11-inch x 8.0-inch
Case weight	10.4 lb.
Qty per case	10 kits of 10



Universal Base with
cable cushion



Universal Base with Threaded
Rod Adapter 900712-10



Universal Base with Snap-in
Adapter 900713-10