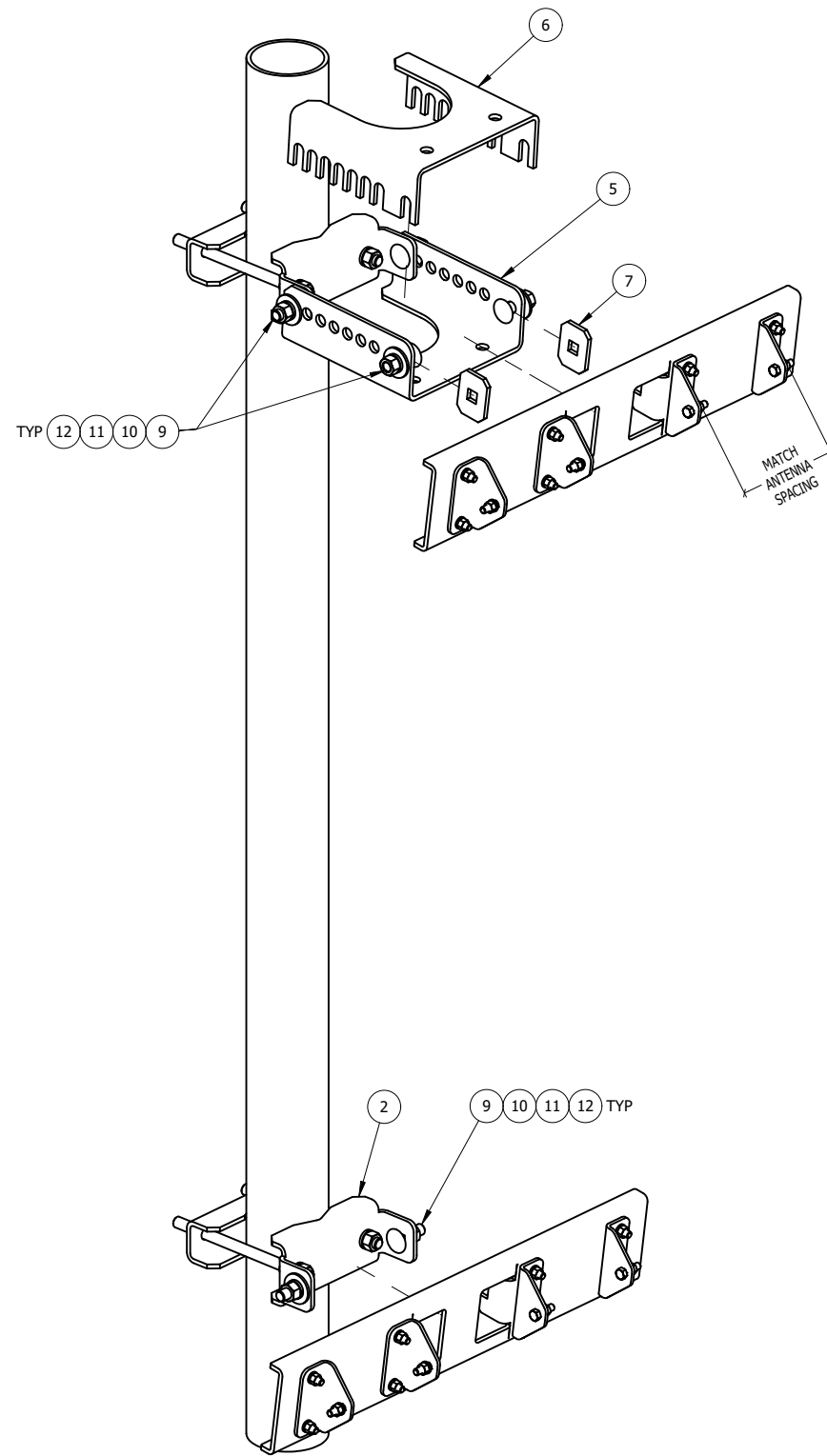
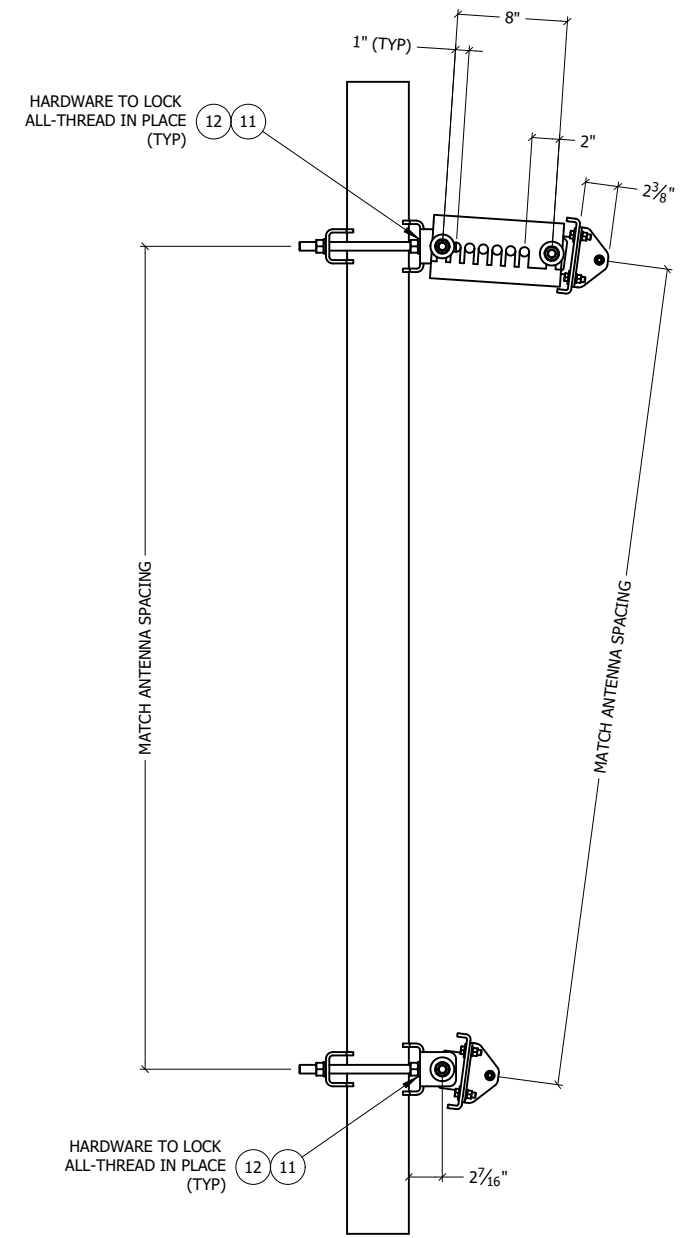


ASSEMBLED VIEW



OPEN VIEW



SIDE VIEW

ITEM	PART #	QTY	DESCRIPTION	FINISH	UNIT WT
1	AM-SBS.01	2	1/4" PLATE	HDG	2.99
2	AM-SBS.02	2	1/4" PLATE	HDG	3.82
3	AM-SBS.03	2	1/4" PLATE	HDG	13.55
4	AM-SBS.04	8	3/16" PLATE	HDG	0.75
5	AM-SBS.05	1	1/4" PLATE	HDG	7.51
6	AM-SBS.06	1	1/4" PLATE	HDG	6.96
7	AM-SBS.07	2	1/4" PLATE	HDG	0.34
8	TR58-10	4	5/8" x 10" A36 HDG ALL-THREAD		0.87
9	27-5470-000	6	HDG - 5/8" X 2" CARRAGE BOLT GR-5, FULL THD		0.23
10	27-5370-005	6	5/8 A36 HDG FLAT WASHER		0.08
11	27-5380-005	18	5/8 HDG LOCK WASHER		0.03
12	27-5391-005	18	5/8" HDG HEX NUT		0.08
13	27-4201-005	24	3/8" x 1 1/4" GR.5 HDG BOLT		0.06
14	27-5020-005	24	3/8 HDG LOCK WASHER		0.01
15	27-5030-005	24	3/8" HDG HEX NUT		0.02
16	27-5010-005	16	HDG - 3/8" FLAT WASHER, USS		0.01

THIS DESIGN AND INFORMATION CONTAINED ON THIS PRINT IS THE PROPERTY OF VALLEY FAB CORPORATION. ANY REPRODUCTION, DUPLICATION OR TRANSFER OF THE PROPRIETARY CONTENT IS PROHIBITED WITHOUT WRITTEN PERMISSION.

STANDARD TOLERANCES:
(UNLESS OTHERWISE NOTED)
FRACTIONS ±1/16"
DECIMALS ±0.01"
ANGLES ±0.5°



TOTAL WT: 71.4 LB

QTY:

FINISH: HDG

JOB #:

TITLE: ANTENNA MOUNT, SIDE-BY-SIDE MOUNT
ADJ TAPER, FIT 1-1/2 TO 4-1/2" O.D ROUND

SERIES: TOWER ANTENNA MOUNT

SHEET: 1 OF 1

DRAWN BY: KY DATE: 5/31/2022
CHK'D BY: -

DRAWING NO. AM-SBS-2-2