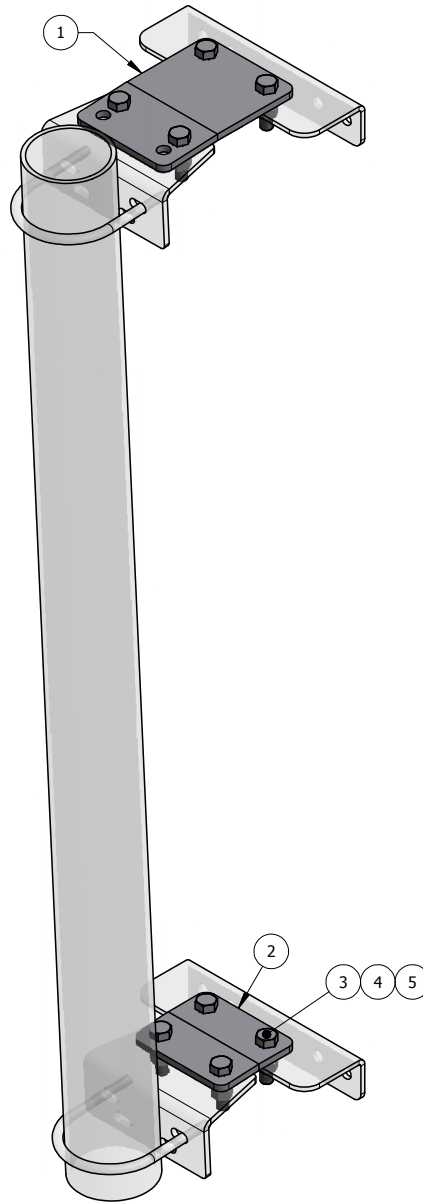


ITEM	PART #	DESCRIPTION	QTY	UNIT WT
1	AM1023.01	3/8" PIPE MOUNT TAPER PLATE (LONG)	1	5.38
2	AM1023.02	3/8" PIPE MOUNT TAPER PLATE (SHORT)	1	3.02
3	27-4404-005	GALV. 5/8" x 2-1/4" GR.5 BOLT	8	0.29
4	27-5380-005	GALV. 5/8" LOCK WASHER	8	0.03
5	27-5391-005	GALV. 5/8" HEX NUT	8	0.08



QTY:
CHK:

STANDARD TOLERANCES:
(UNLESS OTHERWISE NOTED)
FRACTIONS ±1/16"
DECIMALS ±.005"
ANGLES ±.5°

THIS DESIGN AND INFORMATION CONTAINED ON THIS PRINT IS THE PROPERTY OF NEWAVE TOWER COMPONENTS LLC. ANY REPRODUCTION, DUPLICATION OR TRANSFER OF THE PROPRIETARY CONTENT IS PROHIBITED WITHOUT WRITTEN PERMISSION.



MATERIAL: AS SHOWN
HOLES: AS SHOWN
FINISH: HDG

DRAWN BY: KY
CHECKED BY:
DATE: 6/18/2014

TITLE: PIPE MOUNT TAPER KIT
1.12 TO 1.2 TAPER

SERIES: TOWER ANTENNA MOUNT

PART WT (BARE): 11.6 LB
DRAWING NO. AM1023
SHEET: 1 OF 1