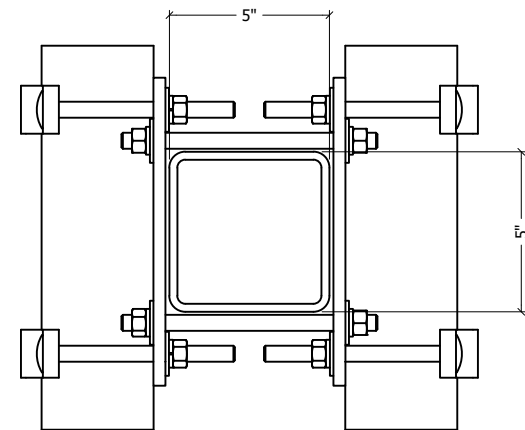


TOP VIEW



SIDE VIEW

ITEM	PART #	QTY	DESCRIPTION	LENGTH	FINISH	UNIT WT
1	CXP3	2	3/8" PLATE		HDG	8.15
2	AMCS-3.01	4	1/2" PLATE		SEE W/O	1.26
3	TR12-8	4	1/2" x 8" A36 HDG ALL-THREAD	8"		0.44
4	27-5321-005	8	GALV. 1/2" X 6" GR.5 CARRAGE BOLT			0.37
5	27-5200-005	16	1/2 A36 HDG FLAT WASHER			0.04
6	27-5210-005	16	1/2 HDG LOCK WASHER			0.01
7	27-5222-005	16	1/2 HDG HEX NUT			0.04

THIS DESIGN AND INFORMATION CONTAINED ON THIS PRINT IS THE PROPERTY OF VALLEY FAB CORPORATION. ANY REPRODUCTION, DUPLICATION OR TRANSFER OF THE PROPRIETARY CONTENT IS PROHIBITED WITHOUT WRITTEN PERMISSION.

**STANDARD TOLERANCES:**  
(UNLESS OTHERWISE NOTED)  
FRACTIONS ±1/16"  
DECIMALS ±0.01"  
ANGLES ±0.5°

**NEWAVE**  
TOWER COMPONENTS. 503-792-3739  
10910 PORTLAND RD. BROOKS, OR 97305

TOTAL WT: 27.6 LB  
QTY:  
FINISH: HDG  
JOB #:

TITLE: CROSSOVER BACK-TO-BACK KIT  
CLAMPS: VERT. 3-1/2" TO HORZ. 5" SQ. TUBE  
SERIES: MONOPOLE MOUNTING SHEET: 1 OF 1  
DRAWN BY: KY DATE: 4/15/2020 CHK'D BY:  
DRAWING NO. CXB-B35