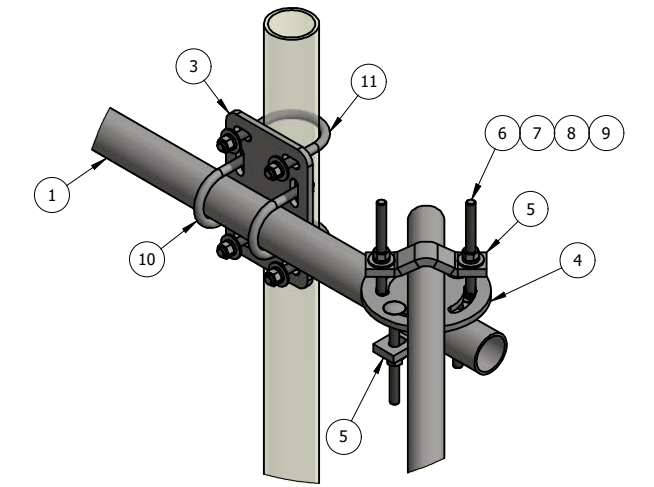


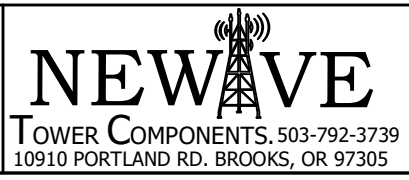
TOP VIEW



DETAIL - A

THIS DESIGN AND INFORMATION CONTAINED ON THIS PRINT IS THE PROPERTY OF VALLEY FAB CORPORATION. ANY REPRODUCTION, DUPLICATION OR TRANSFER OF THE PROPRIETARY CONTENT IS PROHIBITED WITHOUT WRITTEN PERMISSION.

STANDARD TOLERANCES:
(UNLESS OTHERWISE NOTED)
FRACTIONS ±1/16"
DECIMALS ±0.01"
ANGLES ±0.5°



TOTAL WT: 350.75 LB
QTY:
FINISH:
JOB #:

ITEM	PART #	QTY	DESCRIPTION	LENGTH	FINISH	UNIT WT
1	P23-96	4	2" STD PIPE	8'	HDG	29.25
2	P178-84	4	1 1/2" STD PIPE	7'	HDG	19.04
3	CXP1	12	3/8" PLATE		SEE W/O	4.86
4	CX13R.01	8	3/8" PLATE		HDG	3.09
5	AMCS-3.01	16	1/2" PLATE		SEE W/O	1.26
6	27-5321-005	32	GALV. 1/2" X 6" GR.5 CARRAGE BOLT			0.37
7	27-5200-005	32	1/2 A36 HDG FLAT WASHER			0.04
8	27-5210-005	32	1/2 HDG LOCK WASHER			0.01
9	27-5222-005	32	1/2 HDG HEX NUT			0.04
10	27-6060-005	24	HDG - 1/2" x 2-1/2" x 4" U-BOLT ASSEMBLY		HDG	0.76
11	27-6080-005	24	GALV. 1/2" x 3" x 5" GR-5 U-BOLT ASSEMBLY			0.89

TITLE: 4-SEC. FRAME STIFFENER KIT, 2-3/8" O.D PIPE FACE 1-7/8" O.D STIFFARM PIPE @ 7' LONG
 SERIES: MONOPOLE MOUNTING SHEET: 1 OF 1
 DRAWN BY: KY DATE: 8/23/2018
 CHK'D BY:
 DRAWING NO. FSK4-96-X22