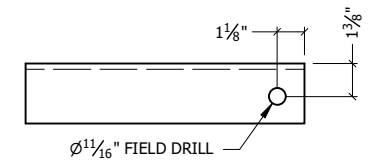
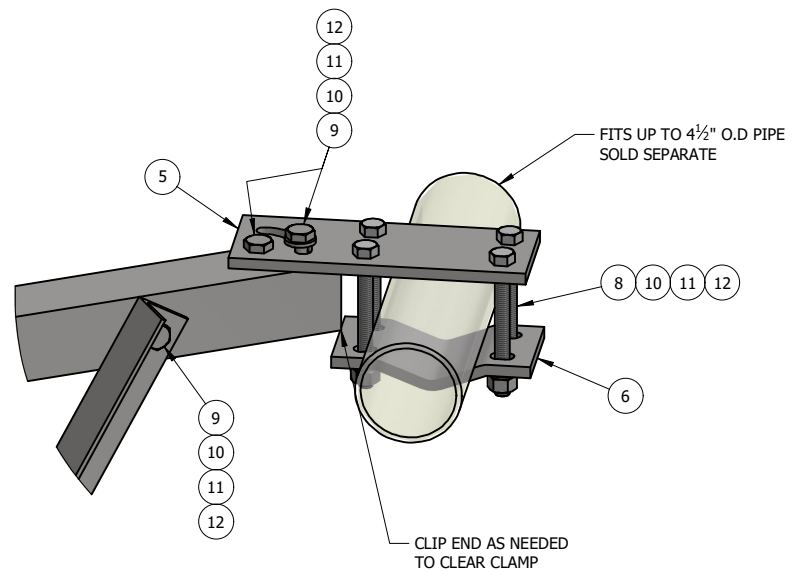


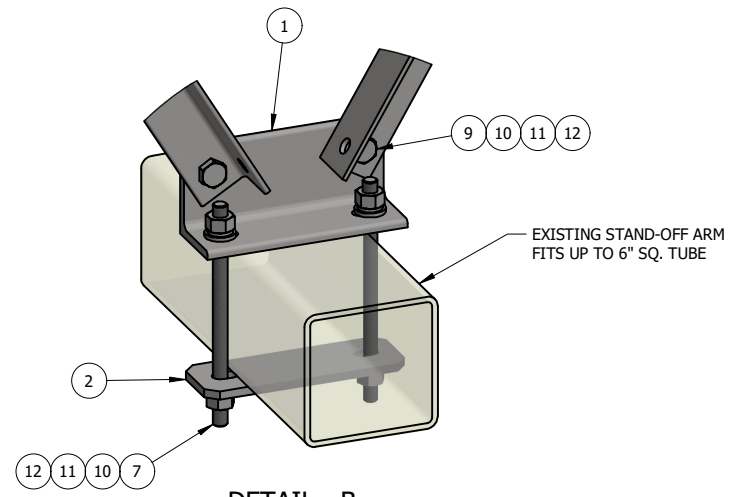
3\"/>



2-1/2\"/>



DETAIL - A



DETAIL - B

ITEM	PART #	QTY	DESCRIPTION	LENGTH	FINISH	UNIT WT
1	LPVSB.01	1	L4x3x3/8"	9"	HDG	6.16
2	LPVSB.02	1	3/8" PLATE		HDG	2.68
3	LPVSB.03	1	L3x3x3/8"	10'	HDG	72.23
4	SMT-L252525-8	2	L2 1/2x2 1/2x1/4"	8'	HDG	32.47
5	SMT-PL5-451205	2	1/2" PLATE		HDG	7.37
6	SMT-V-CLAMP	2	1/2" PLATE		HDG	4.89
7	TR58-10	2	HDG 5/8" x 10" ALL-THD A307 GR-A (OR GREATER)	10"		0.87
8	27-4419-005	8	GALV. 5/8" x 6" GR.5 FULL THREADED BOLT			0.62
9	27-5430-005	8	5/8" x 2" A325 HDG BOLT			0.28
10	27-5372-005	20	5/8 F436 HDG FLAT WASHER			0.05
11	27-5380-005	20	5/8 HDG LOCK WASHER			0.03
12	27-5390-005	20	5/8 HDG HEAVY HEX NUT			0.13

THIS DESIGN AND INFORMATION CONTAINED ON THIS PRINT IS THE PROPERTY OF VALLEY FAB CORPORATION. ANY REPRODUCTION, DUPLICATION OR TRANSFER OF THE PROPRIETARY CONTENT IS PROHIBITED WITHOUT WRITTEN PERMISSION.

STANDARD TOLERANCES:
 (UNLESS OTHERWISE NOTED)
 FRACTIONS ±1/16"
 DECIMALS ±0.01"
 ANGLES ±0.5°

NEWAVE
 TOWER COMPONENTS, 503-792-3739
 10910 PORTLAND RD. BROOKS, OR 97305

TOTAL WT: 183.35 LB
 QTY:
 FINISH:
 JOB #:

TITLE: LOW PROFILE VERTICAL STIFFENER BRACING KIT BOTTOM CLAMP FITS UP TO 6" SQ. TUBE		DRAWN BY: KY	DATE: 1/3/2023	CHK'D BY: -
SERIES: MONOPOLE MOUNTING	SHEET: 1 OF 1	DRAWING NO. LPVSB-10		