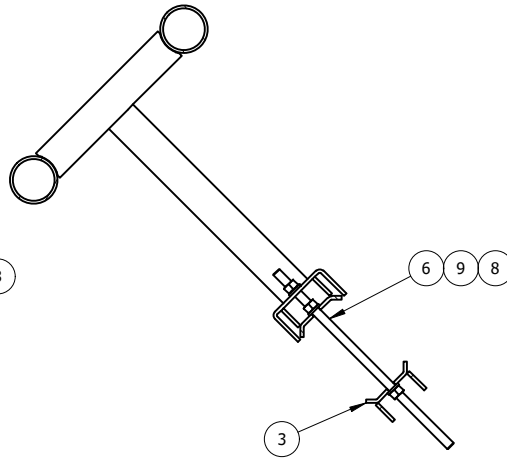
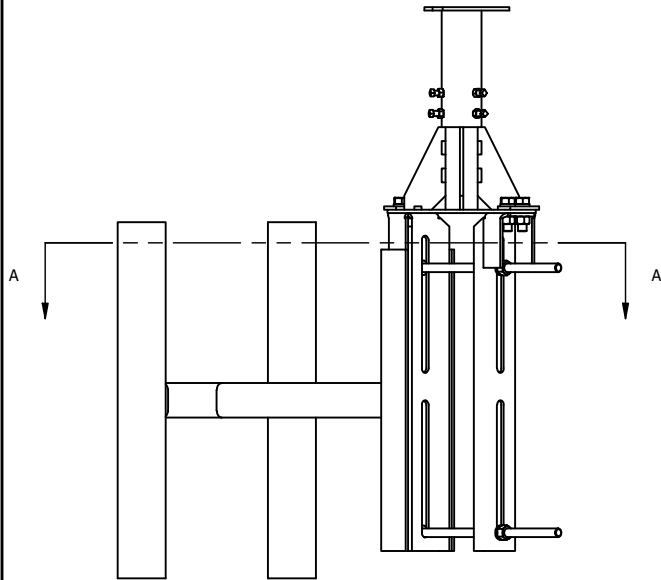
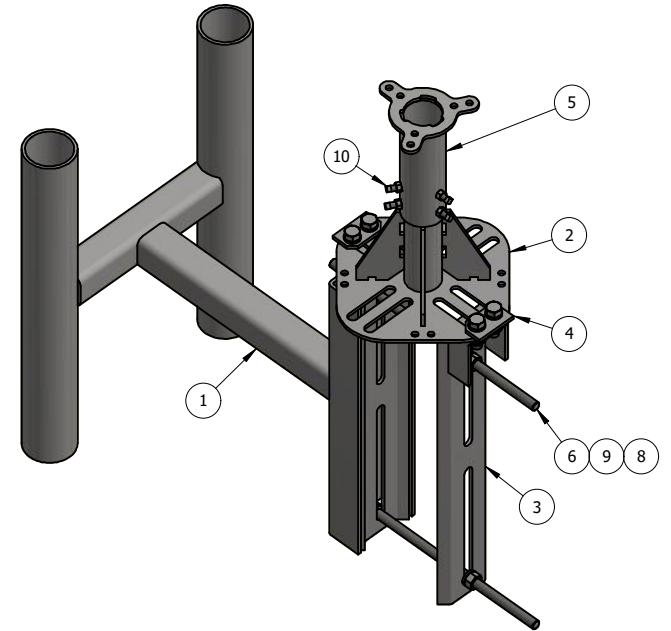


TOP VIEW



SECTION A-A



ITEM	PART #	QTY	DESCRIPTION	LENGTH	FINISH	UNIT WT
1	WP-SCAM-108.01	1	T-ARM WELDMENT		HDG	65.24
2	WP-SCAM-107.01	1	WOODPOLE MOUNT, STEEL TOP EXTENSION		HDG	12.07
3	WP-SCAM-107.02	2	1/4" PLATE		HDG	8.40
4	WP-SCAM-107.03	2	1/4" PLATE		HDG	0.30
5	WP-SCAM-107.10	1	AMOHENOL ANTENNA MOUNT SLEEVE WELDMENT		HDG	5.08
6	TR58-18	2	5/8" x 18" A36 HDG ALL-THREAD	1'-6"		1.56
7	27-4403-005	4	5/8" x 2" GR.5 HDG BOLT			0.27
8	27-5380-005	10	5/8 HDG LOCK WASHER			0.03
9	27-5391-005	6	5/8" HDG HEX NUT			0.08
10	-	6	Square Head Set Screw - Cup Point			0.01

THIS DESIGN AND INFORMATION CONTAINED ON THIS PRINT IS THE PROPERTY OF VALLEY FAB CORPORATION. ANY REPRODUCTION, DUPLICATION OR TRANSFER OF THE PROPRIETARY CONTENT IS PROHIBITED WITHOUT WRITTEN PERMISSION.

STANDARD TOLERANCES:
 (UNLESS OTHERWISE NOTED)
 FRACTIONS ±1/16"
 DECIMALS ±0.01"
 ANGLES ±0.5°

NEWAVE
 TOWER COMPONENTS. 503-792-3739
 10910 PORTLAND RD. BROOKS, OR 97305

TOTAL WT: 104.7 LB
 QTY:
 FINISH: HDG
 JOB #:

TITLE: POLE EXTENSION W/
 SMALL CELL ANTENNA MOUNT
 SERIES: WOODPOLE MOUNTING SHEET: 1 OF 1
 DRAWN BY: SJ DATE: 2/10/2021 CHK'D BY: KY
 DRAWING NO. WP-SCAM-108