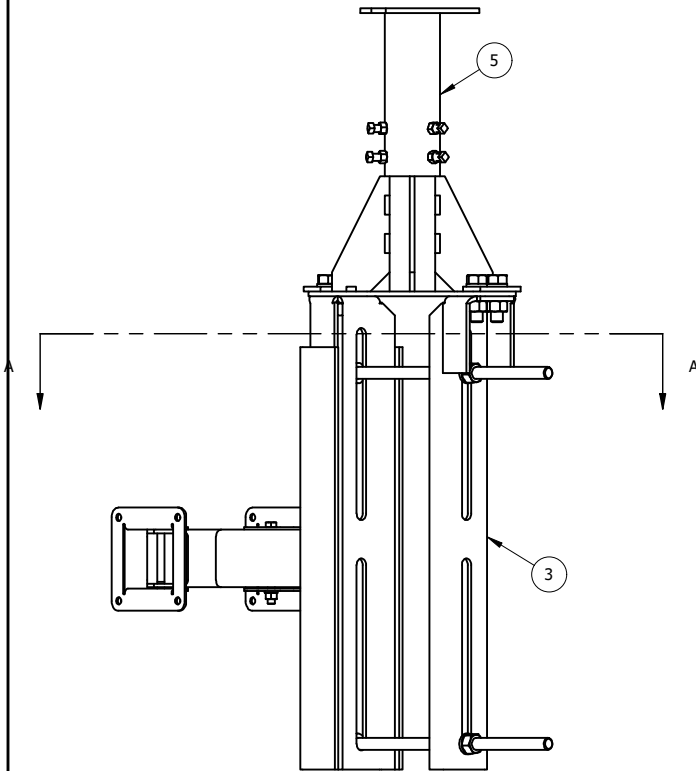
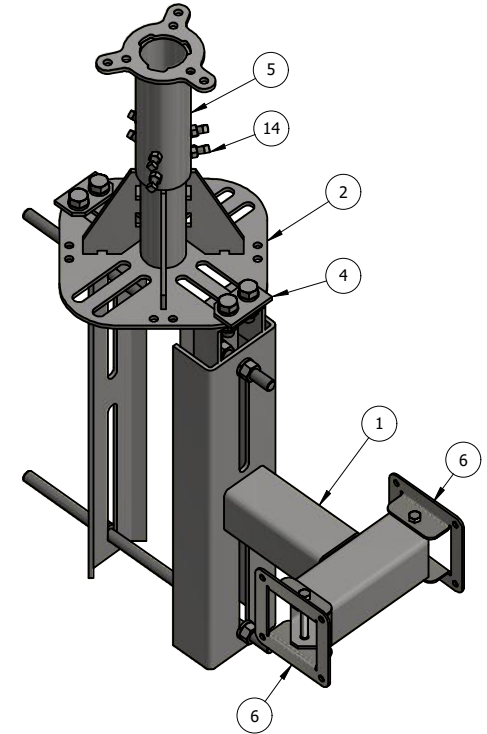


SECTION A-A



ITEM	PART #	QTY	DESCRIPTION	LENGTH	FINISH	UNIT WT
1	WP-SCAM-109.01	1	WOODPOLE SMALL CELL MOUNT 5G 7" WLM'T		HDG	23.03
2	WP-SCAM-107.01	1	WOODPOLE MOUNT, STEEL TOP EXTENSION		HDG	12.07
3	WP-SCAM-107.02	2	1/4" PLATE		HDG	8.40
4	WP-SCAM-107.03	2	1/4" PLATE		HDG	0.30
5	WP-SCAM-107.10	1	AMOHENOL ANTENNA MOUNT SLEEVE WELDMENT		HDG	5.08
6	WP-SCAM5G-12.05	2	11 GA SHEET METAL		BARE	0.87
7	27-9094-005	2	3/8 x 4 SS 304 BOLT			0.16
8	27-9020-005	2	3/8 SS LOCK WASHER			0.01
9	27-9030-005	2	3/8 SS HEX NUT			0.02
10	25- TR58-18	2	GALV. 5/8" x 18" ALL-THREAD			1.56
11	27-4403-005	4	5/8" x 2" GR.5 HDG BOLT			0.27
12	27-5380-005	10	5/8 HDG LOCK WASHER			0.03
13	27-5391-005	6	5/8" HDG HEX NUT		HDG	0.08
14	-	6	Square Head Set Screw - Cup Point			0.01

THIS DESIGN AND INFORMATION CONTAINED ON THIS PRINT IS THE PROPERTY OF VALLEY FAB CORPORATION. ANY REPRODUCTION, DUPLICATION OR TRANSFER OF THE PROPRIETARY CONTENT IS PROHIBITED WITHOUT WRITTEN PERMISSION.

STANDARD TOLERANCES:
(UNLESS OTHERWISE NOTED)
FRACTIONS ±1/16"
DECIMALS ±0.01"
ANGLES ±0.5°

NEWAVE
TOWER COMPONENTS. 503-792-3739
10910 PORTLAND RD. BROOKS, OR 97305

TOTAL WT: 64.7 LB
QTY:
FINISH: HDG
JOB #:

TITLE: POLE EXTENSION W/
SMALL CELL ANTENNA MOUNT
SERIES: WOODPOLE MOUNTING SHEET: 1 OF 1
DRAWN BY: SJ DATE: 2/10/2021 CHK'D BY: KY
DRAWING NO. WP-SCAM-109