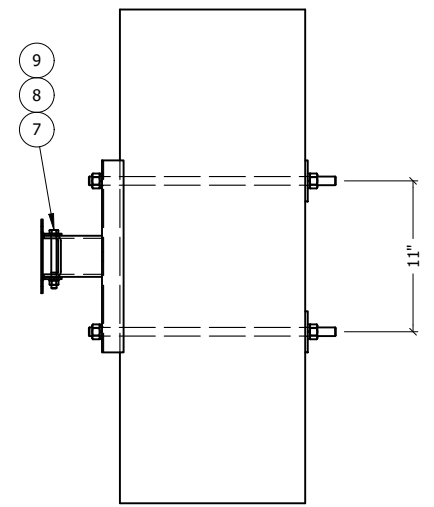


TOP VIEW

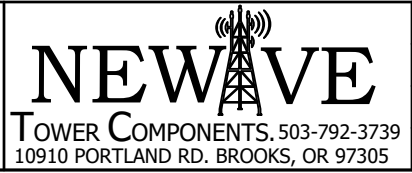


SIDE VIEW

ITEM	PART #	QTY	DESCRIPTION	LENGTH	FINISH	UNIT WT
1	WP-SCAM5G-4.01	1	WOODPOLE SMALL CELL MOUNT 5G 4" WLMT		HDG	8.08
2	WP-SCAM5G-12.05	1	11 GA SHEET METAL		BARE	0.87
3	SFW3-1116G	2	3/16" PLATE		HDG	0.46
4	TR58-18	2	5/8" x 18" A36 HDG ALL-THREAD	1'-6"		1.56
5	27-5380-005	4	5/8 HDG LOCK WASHER			0.03
6	27-5391-005	4	5/8" HDG HEX NUT		HDG	0.08
7	27-9094-005	1	3/8 x 4 SS 304 BOLT			0.16
8	27-9020-005	1	3/8 SS LOCK WASHER			0.01
9	27-9030-005	1	3/8 SS HEX NUT			0.02

THIS DESIGN AND INFORMATION CONTAINED ON THIS PRINT IS THE PROPERTY OF VALLEY FAB CORPORATION. ANY REPRODUCTION, DUPLICATION OR TRANSFER OF THE PROPRIETARY CONTENT IS PROHIBITED WITHOUT WRITTEN PERMISSION.

STANDARD TOLERANCES:
(UNLESS OTHERWISE NOTED)
FRACTIONS ±1/16"
DECIMALS ±0.01"
ANGLES ±0.5°



TOTAL WT: 13.6 LB
QTY:
FINISH:
JOB #:

TITLE: WOOD POLE SMALL CELL ANTENNA MOUNT 5G 4" ASSEMBLY, BACK-TO-BACK
SERIES: WOODPOLE MOUNTING SHEET: 1 OF 1

DRAWN BY: KY DATE: 6/25/2020 CHK'D BY: -
DRAWING NO. WP-SCAM5G-4