

SIDE VIEW

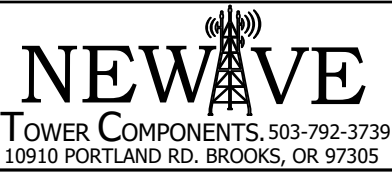
ELECTRICAL DISCONNECT UNIT (NOT INCLUDED)

(E)WOODPOLE

ITEM	PART #	QTY	DESCRIPTION	LENGTH	FINISH	UNIT WT
1	WP-SCEM-DB8.01	2	3/16" PLATE		HDG	2.01
2	WP-SCEM-DB8.02	2	1/4" PLATE		HDG	1.61
3	27-4201-005	4	3/8" x 1 1/4" GR.5 HDG BOLT			0.06
4	27-5020-005	4	3/8 HDG LOCK WASHER			0.01
5	27-5030-005	4	3/8" HDG HEX NUT			0.02

THIS DESIGN AND INFORMATION CONTAINED ON THIS PRINT IS THE PROPERTY OF VALLEY FAB CORPORATION. ANY REPRODUCTION, DUPLICATION OR TRANSFER OF THE PROPRIETARY CONTENT IS PROHIBITED WITHOUT WRITTEN PERMISSION.

**STANDARD TOLERANCES:**  
(UNLESS OTHERWISE NOTED)  
FRACTIONS ±1/16"  
DECIMALS ±0.01"  
ANGLES ±0.5°



TOTAL WT: 7.6 LB  
QTY:  
FINISH:  
JOB #:

TITLE: WOODPOLE, SMALL CELL EQUIPMENT MOUNT  
8" STAND-OFF DISCONNECT BRACKET  
SERIES: WOODPOLE MOUNTING SHEET: 1 OF 1

DRAWN BY: KY DATE: 12/17/2020 CHK'D BY: -  
DRAWING NO. WP-SCEM-DB8