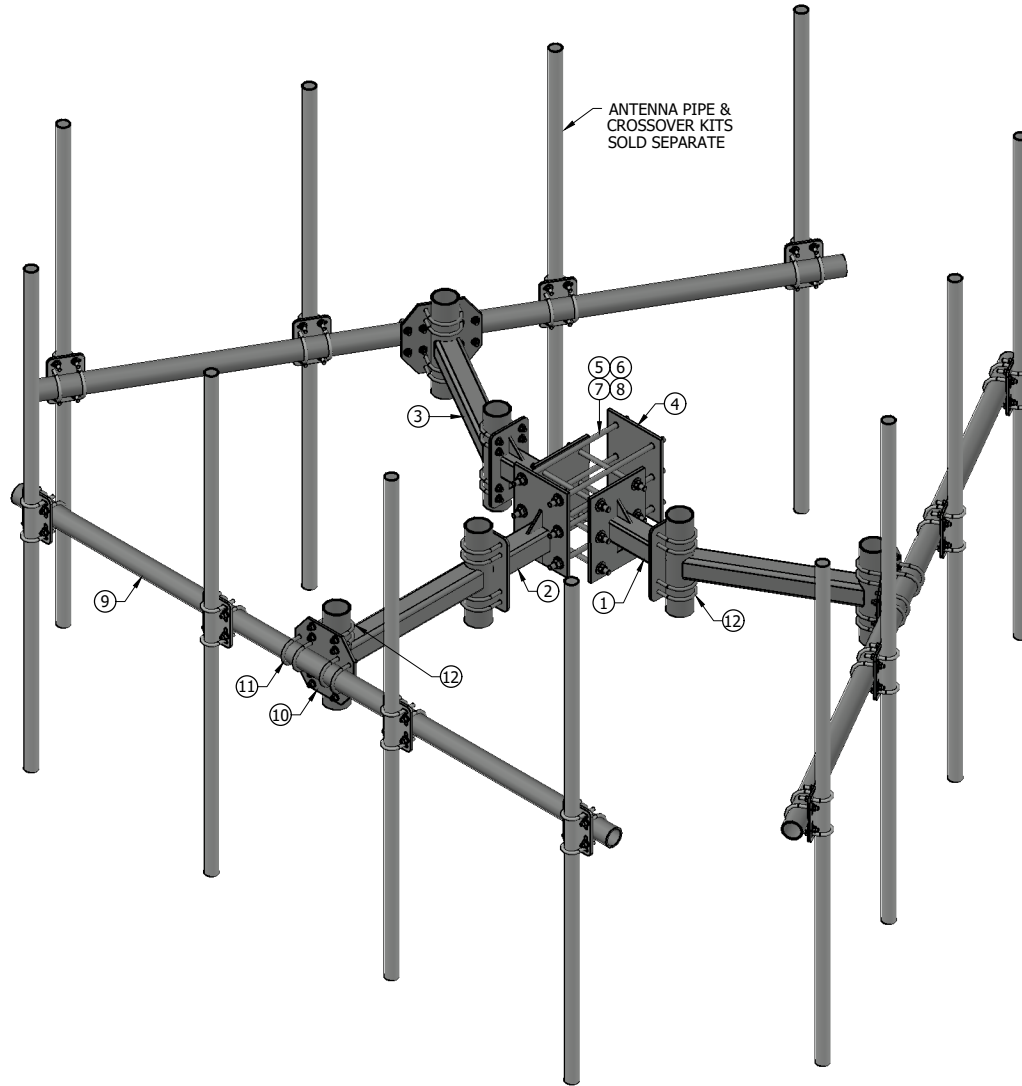


REV	BY	DESCRIPTION	DATE
A	CJW	CHANGED PART NUMBER	09/24/12

ITEM	PART #	DESCRIPTION	QTY.
1	PART - 3A	TUBE WELDMENT	2
2	PART - 3B	TUBE WELDMENT OFFSET	1
3	PART - 3C	3' PIPE STAND-OFF	3
4	PART - b20	1/2" CLAMP PLATE	1
5	27-5585-005	GALV. 3/4" B7 ALL THREAD @ 28" LONG	12
6	27-5480-005	GALV. 3/4" FLAT WASHER	24
7	27-5490-005	GALV. 3/4" LOCK WASHER	24
8	27-5500-005	GALV. 3/4" HEAVY HEX NUT	24
9	P35-150	3-1/2" O.D. PIPE @ 12'-6" LONG	3
10	AM1016-XP.01	3-1/2" TO 4-1/2" CROSS OVER PLATE	3
11	27-6090-005	GALV. 1/2" x 3-5/8" x 5" U-BOLT ASSEMBLY	12
12	27-6130-005	GALV. 1/2" x 4-5/8" x 6" U-BOLT ASSEMBLY	24



STANDARD TOLERANCES:
(UNLESS OTHERWISE NOTED)

FRACTIONS ±1/16"
DECIMALS ±.005"
ANGLES ±.5°

THE DESIGN AND INFORMATION CONTAINED ON THIS PRINT IS PROPERTY OF VALLEY FAB CORP. ANY REPRODUCTION, DUPLICATION, OR TRANSFER OF THE PROPRIETARY CONTENT IS PROHIBITED WITHOUT WRITTEN PERMISSION.

NEWAVE
TOWER COMPONENTS. 503-792-3739
10910 PORTLAND RD. BROOKS, OR 97305

MATERIAL: AS SHOWN
HOLES: AS SHOWN
FINISH: HDG

DRAWN BY: KY
CHECKED BY: CW
DATE: 03/02/2012

TITLE: WOOD POLE MOUNT
3 SECTOR T-ARM FRAME

SERIES:

PROJECT NO. - DRAWING NO. WPSQK-12-48 SHEET: 1 OF 3