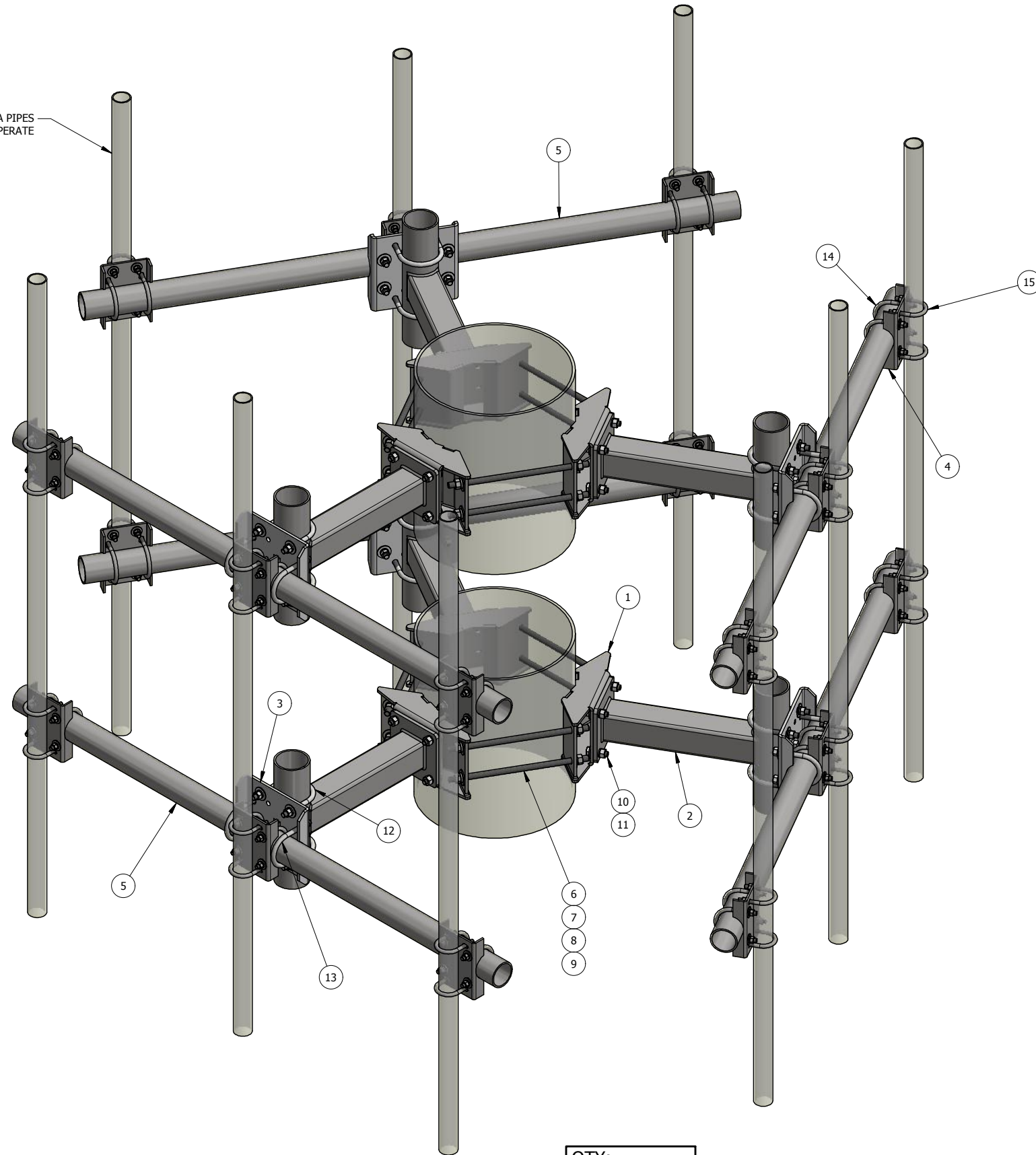


2-3/8" O.D ANTENNA PIPES
SOLD SEPERATE



ITEM	PART #	DESCRIPTION	QTY	UNIT WT
1	M620-3.01	UNIVERSAL 6" TO 20" O.D RING MOUNT WELDMENT	6	27.87
2	M3015-24.01	SINGLE SUPPORT ARM 24" STAND OFF WELDMENT	6	39.28
3	AM1015-XP.01	CELLULAR FACE MOUNT FOR 3-1/2" TO 4-1/2" CROSS OVER	6	15.61
4	CXCP1	2-3/8" TO 3-1/2" CROSS OVER BENT CHANNEL	18	4.66
5	P35-84	GALV. 3" STD PIPE @ 7'-0" LONG	6	53.09
6	27-5578-005	3/4" x 18" B7 HDG ALL-THREAD	12	2.25
7	27-5481-005	3/4" A36 HDG FLAT WASHER	24	0.09
8	27-5490-005	3/4" HDG LOCK WASHER	24	0.05
9	27-5501-005	3/4" HDG HEX NUT	24	0.14
10	27-5440-005	GALV. 5/8" x 2-1/4" A325 BOLT ASSEMBLY	24	0.31
11	27-5370-005	5/8" A36 HDG FLAT WASHER	24	0.08
12	27-6230-005	GALV. 5/8" x 4-5/8" x 6-1/2" U-BOLT ASSEMBLY	12	1.80
13	27-6200-005	GALV. 5/8" x 3-5/8" x 6" U-BOLT ASSEMBLY	12	1.66
14	27-6090-005	GALV. 1/2" x 3 5/8" x 5" U-BOLT ASSEMBLY	36	0.91
15	27-6060-005	GALV. 1/2" x 2-1/2" x 4" GR-5 U-BOLT ASSEMBLY	36	0.76

QTY:
CHK:

STANDARD TOLERANCES:
(UNLESS OTHERWISE NOTED)

FRACTIONS	±1/16"
1 DECIMAL	±.1"
2 DECIMAL	±.03"
3 DECIMAL	±.005"
ANGLES	±.5°

THIS DESIGN AND INFORMATION CONTAINED ON THIS PRINT IS THE PROPERTY OF NEWAVE TOWER COMPONENTS LLC. ANY REPRODUCTION, DUPLICATION OR TRANSFER OF THE PROPRIETARY CONTENT IS PROHIBITED WITHOUT WRITTEN PERMISSION.

NEWAVE
Tower Components, 503-792-3739
10910 PORTLAND RD. BROOKS, OR 97305

MATERIAL: AS SHOWN		TITLE: 3-SECTOR WOOD POLE T-ARM DOUBLE FRAME, 24" STND-OFF, 7' FACE	
GRADE: AS SHOWN	DRAWN BY: KY	SERIES: WOOD POLE MOUNTING	
FINISH: HDG	CHECKED BY:	DATE: 11/28/2016	PART WT (BARE): 1047.75 LB
		DRAWING NO. WPTF3D-237-2	