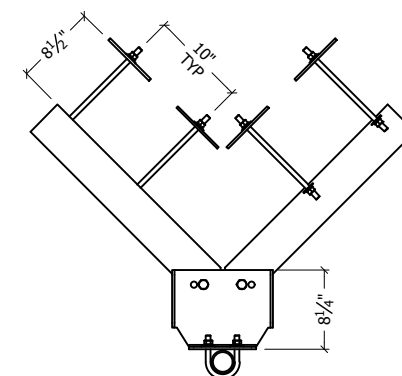
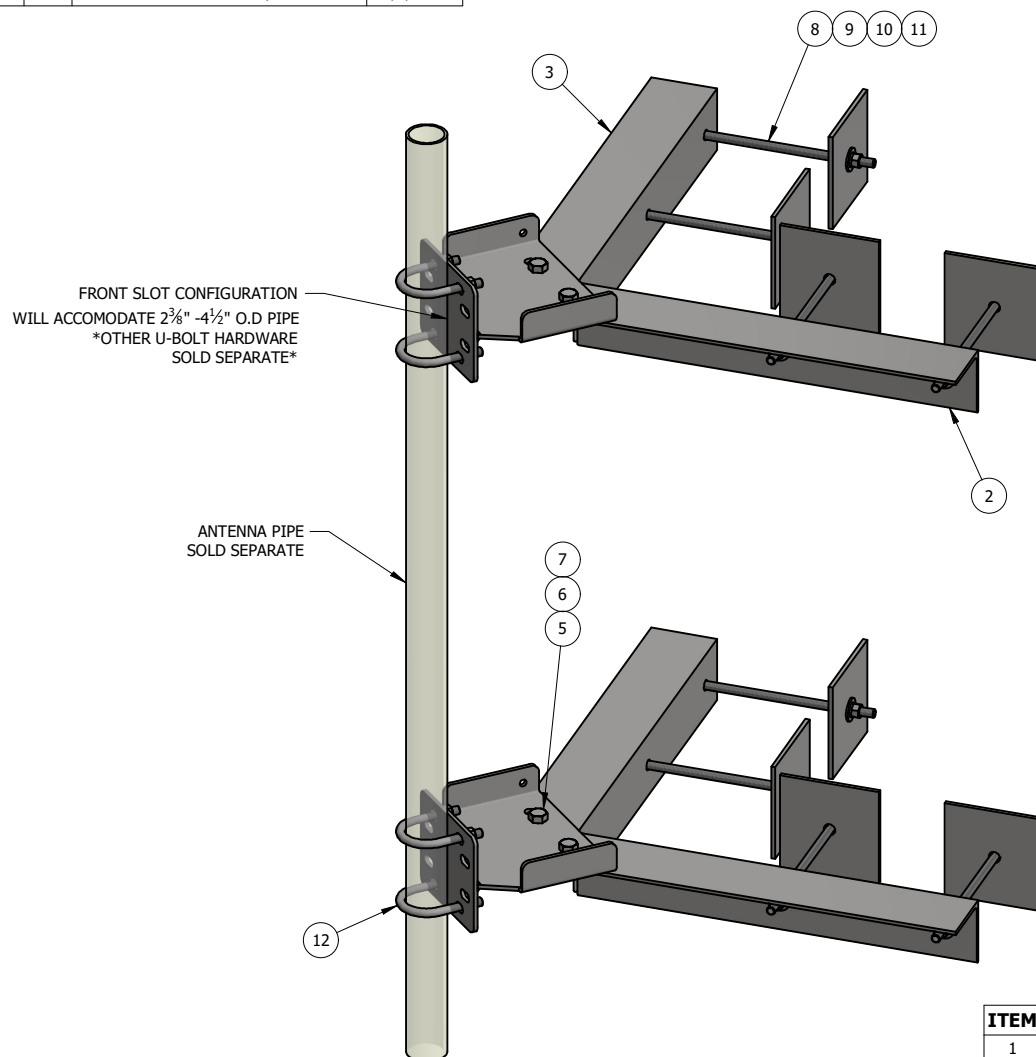


REV	BY	DESCRIPTION	DATE
A	KY	SEE MODEL I PROPERTIES/COMMENTS	9/7/2023



TOP VIEW

ITEM	PART #	QTY	DESCRIPTION	LENGTH	FINISH	UNIT WT
1	RT4021	2	ADJ. WALL MOUNT STANDOFF WELDMENT		HDG	9.74
2	RT4016.01	2	RIGHT CORNER WALL MOUNT ANGLE			13.72
3	RT4016.02	2	LEFT CORNER WALL MOUNT ANGLE			13.72
4	SFW6-1116G	8	1/4" PLATE		HDG	2.53
5	27-4402-005	4	5/8" x 1 3/4" GR.5 HDG BOLT			0.25
6	27-5380-005	4	5/8" HDG LOCK WASHER		HDG	0.03
7	27-5391-005	4	5/8" HDG HEX NUT		HDG	0.08
8	TR12-12	8	GALV. 1/2" x 12" ALL-THREAD			0.67
9	27-5200-005	16	1/2" A36 HDG FLAT WASHER			0.04
10	27-5210-005	16	1/2" HDG LOCK WASHER			0.01
11	27-5222-005	16	1/2" HDG HEX NUT			0.04
12	27-6060-005	4	HDG - 1/2" x 2-1/2" x 4" U-BOLT ASSEMBLY		HDG	0.76

THIS DESIGN AND INFORMATION CONTAINED ON THIS PRINT IS THE PROPERTY OF VALLEY FAB CORPORATION. ANY REPRODUCTION, DUPLICATION OR TRANSFER OF THE PROPRIETARY CONTENT IS PROHIBITED WITHOUT WRITTEN PERMISSION.

STANDARD TOLERANCES:

(UNLESS OTHERWISE NOTED)

FRACTIONS ±1/16"
DECIMALS ±0.01"
ANGLES ±0.5°



TOWER COMPONENTS. 503-792-3739
10910 PORTLAND RD. BROOKS, OR 97305

TOTAL WT: 105.9 LB

QTY:

FINISH:

JOB #:

TITLE:

ADJUSTABLE CORNER WALL MOUNT KIT
FOR HOLLOW WALL

SERIES: ROOFTOP/WALL MOUNT

SHEET: 1 OF 1

DRAWN BY:

JG

DATE:

9/7/2023

CHK'D BY:

KY

DRAWING NO.

RT4016H