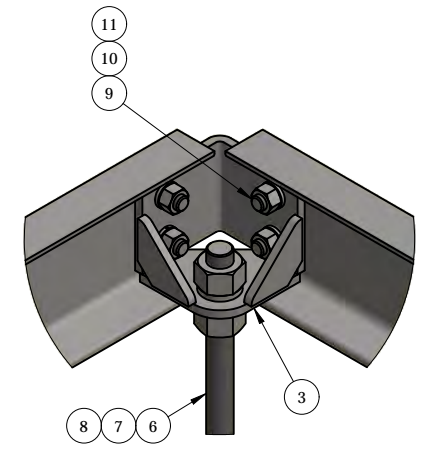
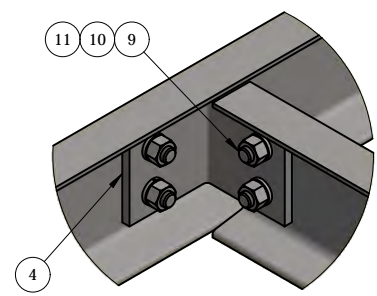


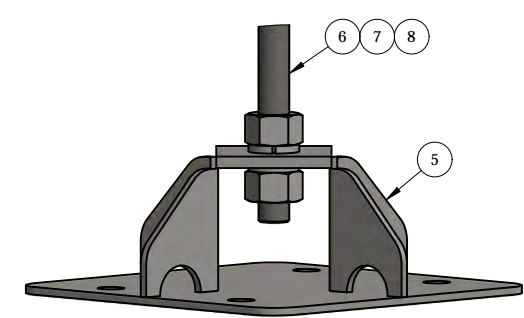
PLAN VIEW



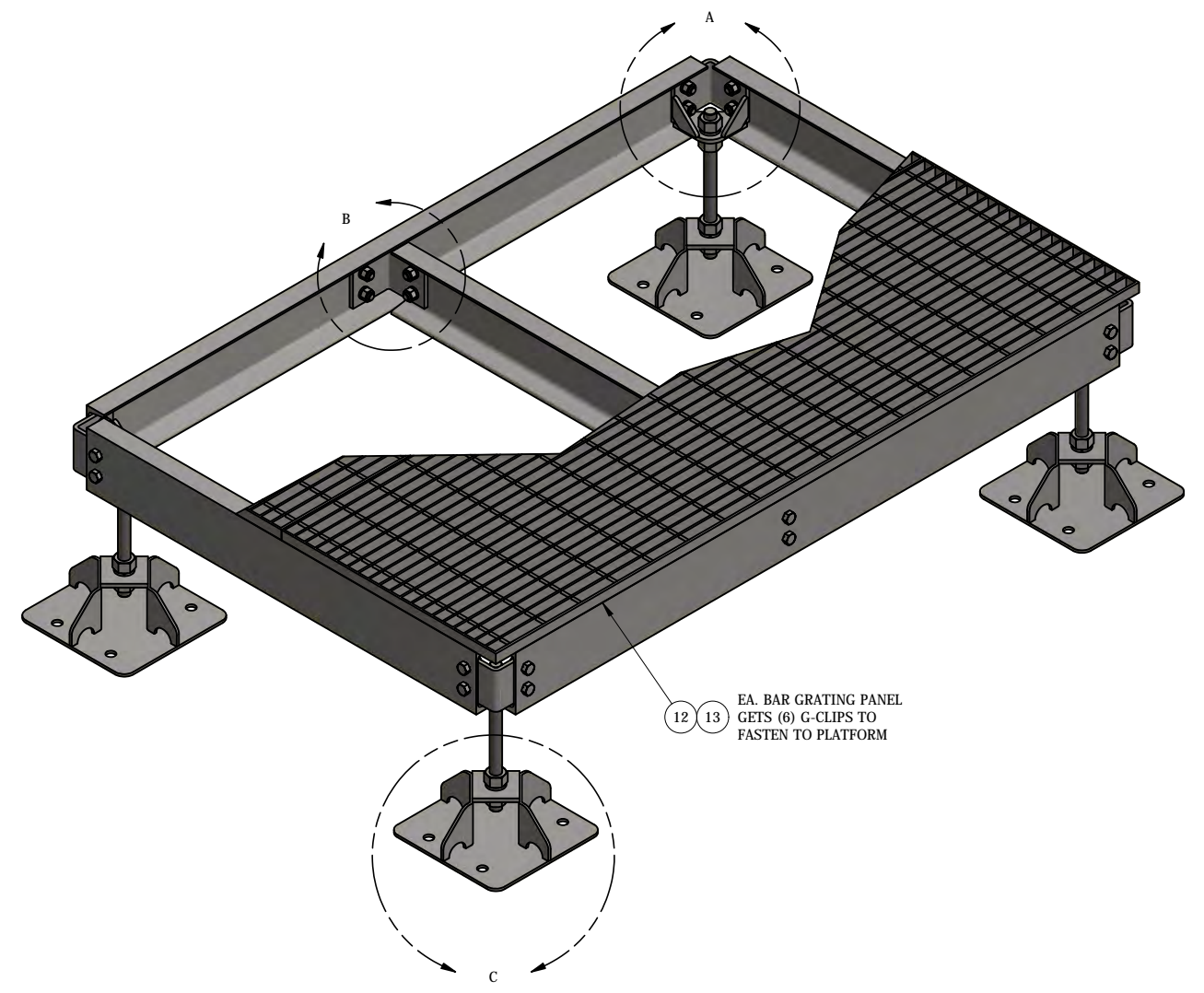
DETAIL - A



DETAIL - B



DETAIL - C



EA. BAR GRATING PANEL GETS (6) G-CLIPS TO FASTEN TO PLATFORM

ITEM	PART #	QTY	DESCRIPTION	LENGTH	FINISH	UNIT WT
1	AF4M.01	3	C6x8.2	3'-7 5/8"	HDG	32.51
2	AF6M.01	2	C6x8.2	5'-7 5/8"	HDG	50.41
3	AFCB.01	4	CORNER BRACKET WELDMENT		HDG	5.60
4	AFCB.02	2	3/8" PLATE		SEE W/O	3.34
5	AFBP.01	4	BASE PLATE WELDMENT		HDG	15.63
6	27-5740-005	4	1" x 14" A36 HDG ALL-THREAD	1'-2"		3.12
7	27-5704-005	16	1 HDG LOCK WASHER			0.09
8	27-5700-005	16	1 HDG HEAVY HEX NUT			0.47
9	27-4401-005	24	5/8" x 1 1/2" GR.5 HDG BOLT			0.23
10	27-5380-005	24	5/8 HDG LOCK WASHER			0.03
11	27-5391-005	24	5/8" HDG HEX NUT			0.08
12	AF2M.72	2	(19W-4) 1" x 3/16" B.G. @ 2" WIDE	6'	HDG	88.82
13	25-GG1A CLIP	12	GRATING G-CLIP			0.00

THIS DESIGN AND INFORMATION CONTAINED ON THIS PRINT IS THE PROPERTY OF VALLEY FAB CORPORATION. ANY REPRODUCTION, DUPLICATION OR TRANSFER OF THE PROPRIETARY CONTENT IS PROHIBITED WITHOUT WRITTEN PERMISSION.

**STANDARD TOLERANCES:**  
(UNLESS OTHERWISE NOTED)  
FRACTIONS - 1/16"  
DECIMALS - 0.01"  
ANGLES - 0.5°

**NEWAVE**  
TOWER COMPONENTS, 503-792-3739  
10910 PORTLAND RD. BROOKS, OR 97305

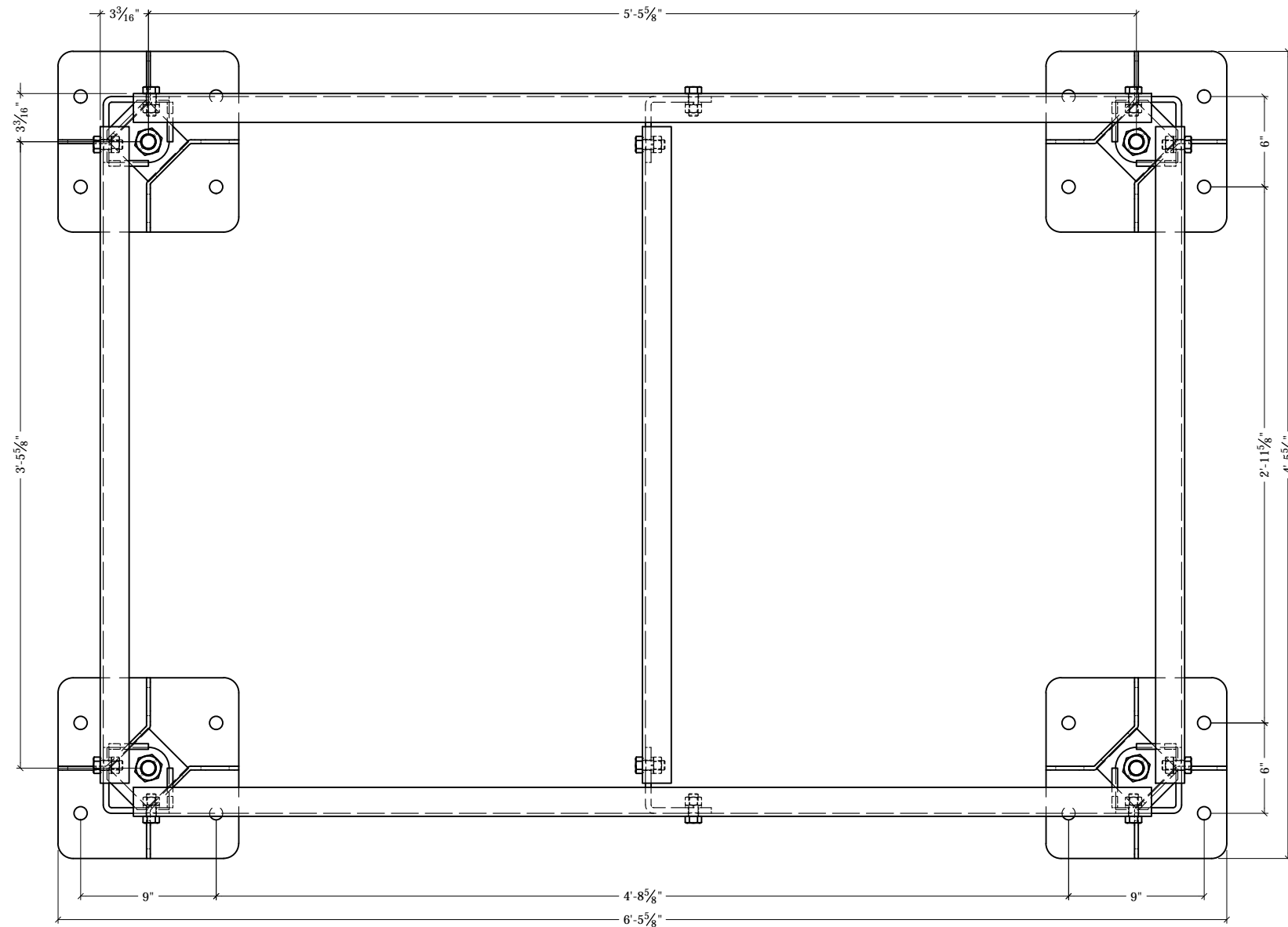
TOTAL WT: 497.1 LB  
QTY:  
FINISH:  
JOB #:

TITLE: 4' x 6' MODULAR PLATFORM WITH (4) ADJUSTABLE FEET

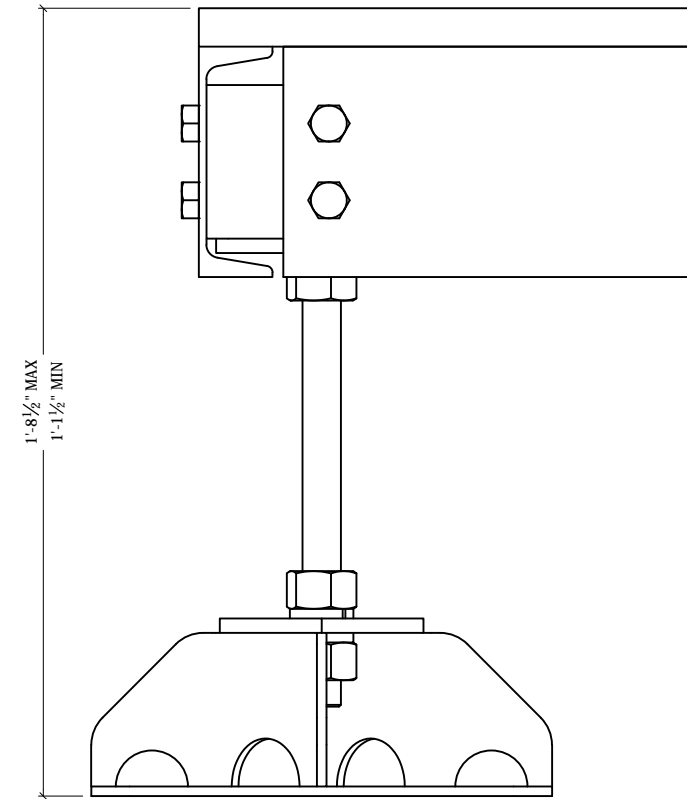
SERIES: PLATFORMS SHEET: 1 OF 2

DRAWN BY: JG DATE: 1/6/2021 CHK'D BY: CJW

DRAWING NO. AF46M-4



**FOOT PAD LAYOUT**



**ELEVATION**

THIS DESIGN AND INFORMATION CONTAINED ON THIS PRINT IS THE PROPERTY OF VALLEY FAB CORPORATION. ANY REPRODUCTION, DUPLICATION OR TRANSFER OF THE PROPRIETARY CONTENT IS PROHIBITED WITHOUT WRITTEN PERMISSION.

**STANDARD TOLERANCES:**  
(UNLESS OTHERWISE NOTED)  
FRACTIONS - 1/16"  
DECIMALS - 0.01"  
ANGLES - 0.5°

**NEWAVE**  
TOWER COMPONENTS, 503-792-3739  
10910 PORTLAND RD. BROOKS, OR 97305

TOTAL WT: 497.1 LB  
QTY:  
FINISH:  
JOB #:

TITLE: 4' x 6' MODULAR PLATFORM WITH (4) ADJUSTABLE FEET  
SERIES: PLATFORMS SHEET: 2 OF 2

DRAWN BY: JG	DATE: 1/6/2021	CHK'D BY: CJW
DRAWING NO. AF46M-4		