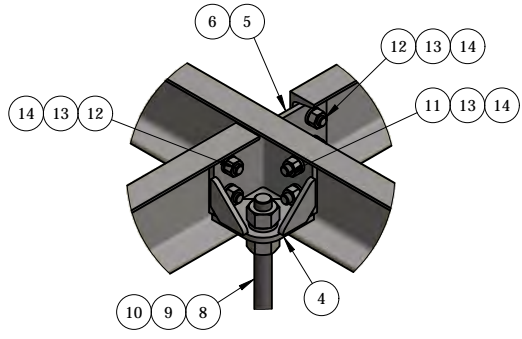
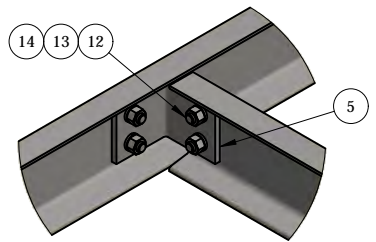


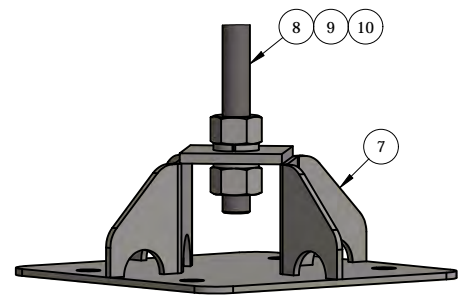
DETAIL - A



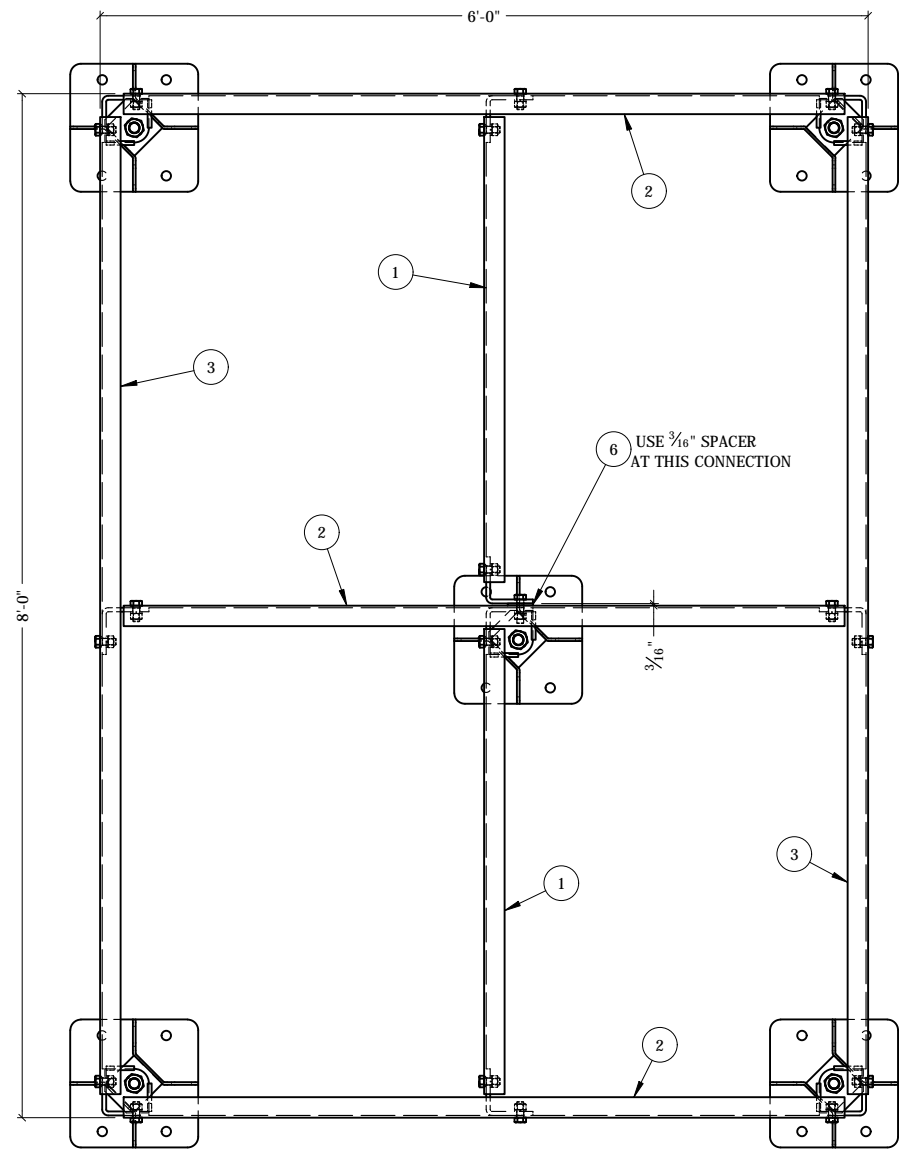
DETAIL - B



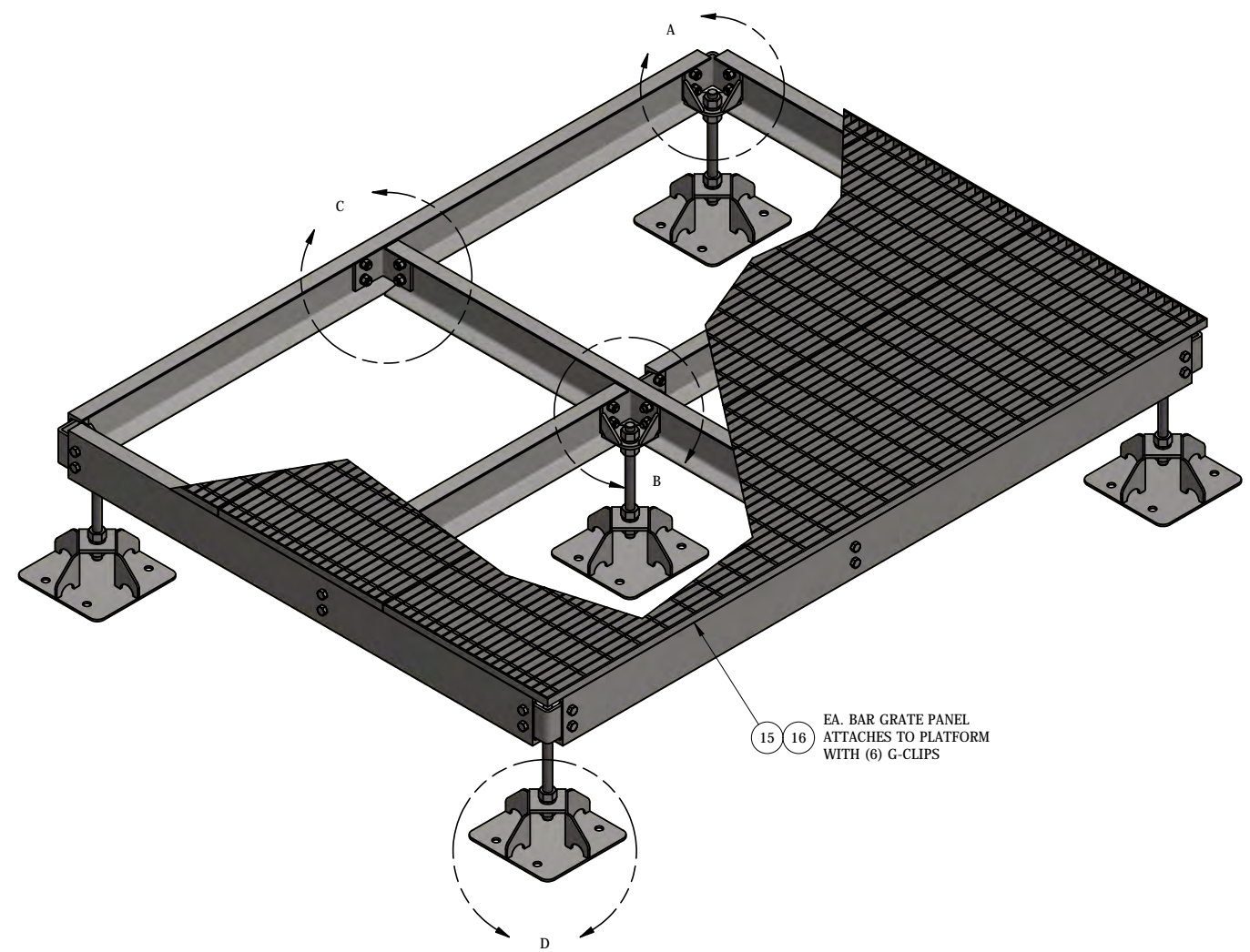
DETAIL - C



DETAIL - D



PLAN VIEW



ITEM	PART #	QTY	DESCRIPTION	LENGTH	FINISH	UNIT WT
1	AF4M.01	2	C6x8.2	3'-7 5/8"	HDG	32.51
2	AF6M.01	3	C6x8.2	5'-7 5/8"	HDG	50.41
3	AF8M.01	2	C6x8.2	7'-7 5/8"	HDG	68.36
4	AFCB.01	5	CORNER BRACKET WELDMENT		HDG	5.60
5	AFCB.02	5	3/8" PLATE		SEE W/O	3.34
6	AFOM.01	1	3/16" PLATE		HDG	0.46
7	AFBP.01	5	BASE PLATE WELDMENT		HDG	15.63
8	27-5740-005	5	1" x 14" A36 HDG ALL-THREAD	1'-2"		3.12
9	27-5704-005	20	1 HDG LOCK WASHER			0.09
10	27-5700-005	20	1 HDG HEAVY HEX NUT			0.47
11	27-4404-005	2	5/8" x 2 1/4" GR.5 HDG BOLT			0.29
12	27-4401-005	36	5/8" x 1 1/2" GR.5 HDG BOLT			0.23
13	27-5380-005	38	5/8 HDG LOCK WASHER			0.03
14	27-5391-005	38	5/8" HDG HEX NUT			0.08
15	AF2M.96	3	(19W-4) 1" x 3/16" B.G. @ 2' WIDE	8'	HDG	117.71
16	25-GG1A CLIP	18	GRATING G-CLIP			0.00

THIS DESIGN AND INFORMATION CONTAINED ON THIS PRINT IS THE PROPERTY OF VALLEY FAB CORPORATION. ANY REPRODUCTION, DUPLICATION OR TRANSFER OF THE PROPRIETARY CONTENT IS PROHIBITED WITHOUT WRITTEN PERMISSION.

**STANDARD TOLERANCES:**  
(UNLESS OTHERWISE NOTED)  
FRACTIONS -1/16"  
DECIMALS -0.01"  
ANGLES -0.5°

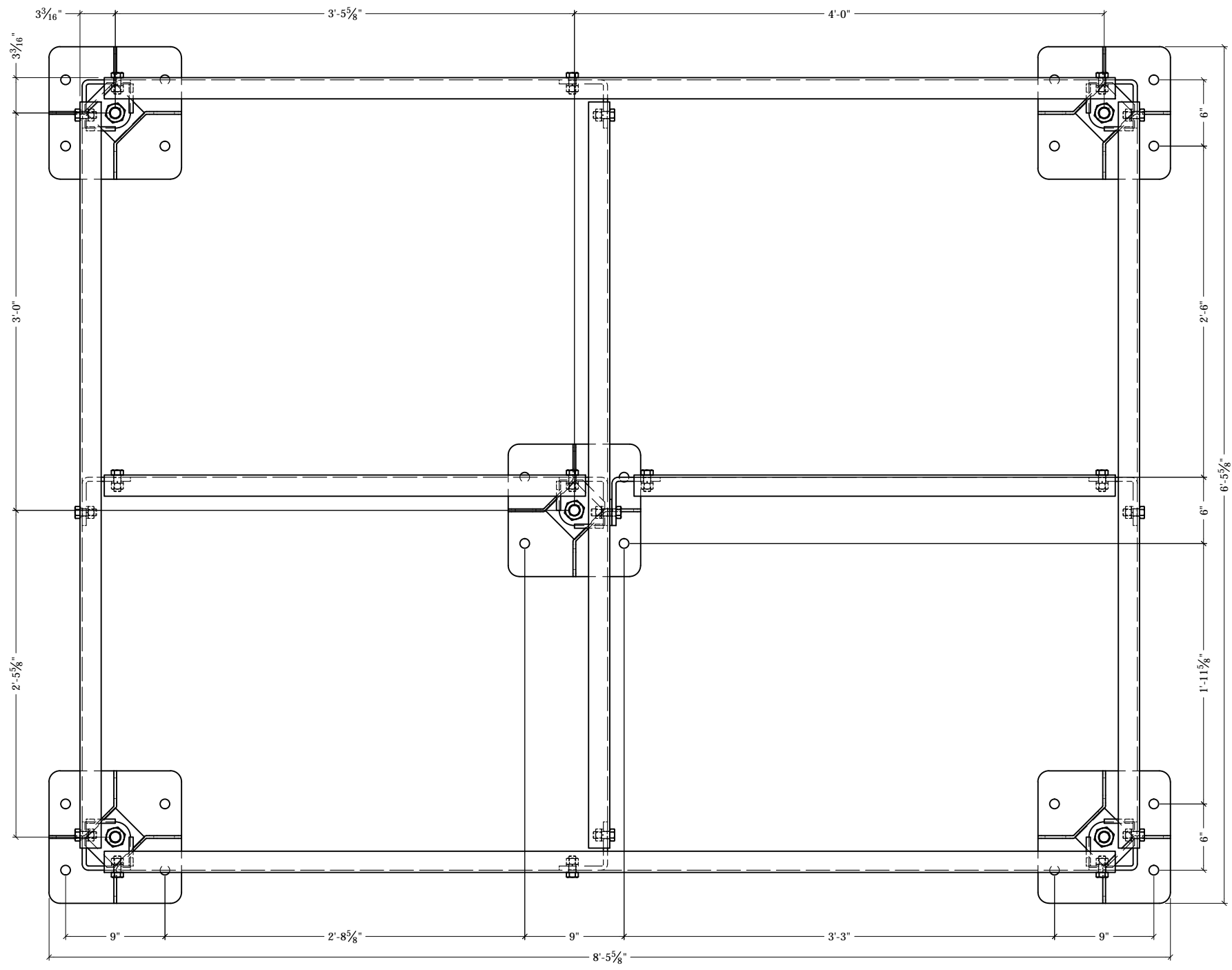
**NEWAVE**  
TOWER COMPONENTS, 503-792-3739  
10910 PORTLAND RD. BROOKS, OR 97305

TOTAL WT: 869.15 LB  
QTY:  
FINISH:  
JOB #:

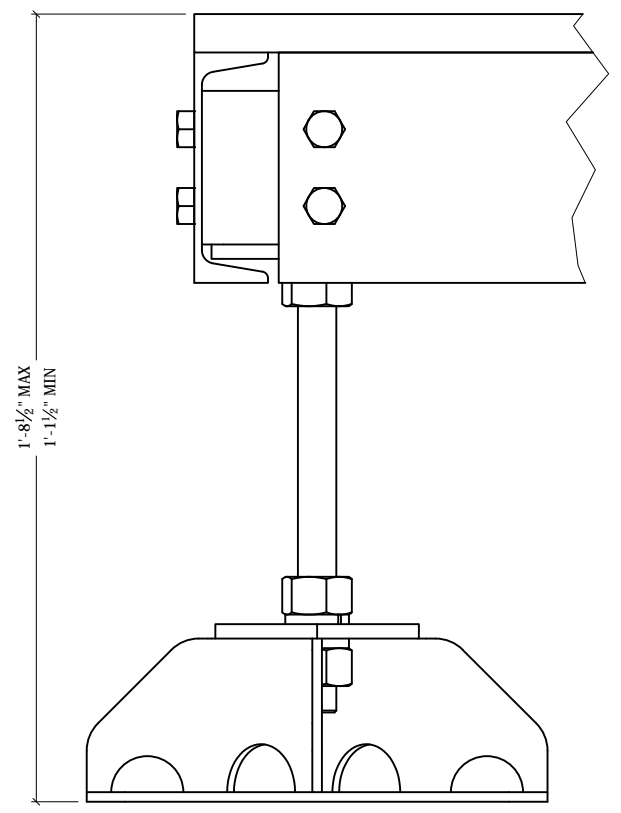
TITLE: **6' X 8' MODULAR PLATFORM WITH (4) ADJUSTABLE FEET**

SERIES: PLATFORMS SHEET: 1 OF 2

DRAWN BY: JG DATE: 1/6/2021 CHK'D BY: CJW  
DRAWING NO. AF68M-5



FOOT PAD LAYOUT



ELEVATION

<p>THIS DESIGN AND INFORMATION CONTAINED ON THIS PRINT IS THE PROPERTY OF VALLEY FAB CORPORATION. ANY REPRODUCTION, DUPLICATION OR TRANSFER OF THE PROPRIETARY CONTENT IS PROHIBITED WITHOUT WRITTEN PERMISSION.</p>	
<p><b>STANDARD TOLERANCES:</b> (UNLESS OTHERWISE NOTED) FRACTIONS - 1/16" DECIMALS - 0.01" ANGLES - 0.5°</p>	<p><b>NEWAVE</b> TOWER COMPONENTS, 503-792-3739 10910 PORTLAND RD. BROOKS, OR 97305</p>
<p>TOTAL WT: 869.15 LB</p>	<p>QTY:</p>
<p>FINISH:</p>	<p>JOB #:</p>

<p>TITLE: 6' X 8' MODULAR PLATFORM WITH (4) ADJUSTBLE FEET</p>		<p>DRAWN BY: JG</p>	<p>DATE: 1/6/2021</p>	<p>CHK'D BY: CJW</p>
<p>SERIES: PLATFORMS</p>	<p>SHEET: 2 OF 2</p>	<p>DRAWING NO. AF68M-5</p>		