

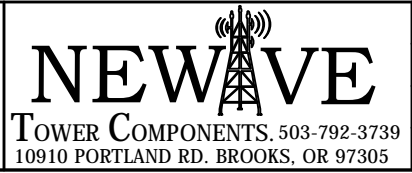
NOTE: ONLY REQ'D ON ANGLE LEG TOWER

TOP VIEW

ITE	PART #	QTY	DESCRIPTION	LENGTH	FINISH	UNIT W
1	AM1026-45.01	1	ADJUSTABLE TAPERED PIPE MAST WELDMENT		HDG	58.66
2	AM1026-45.04	1	3/8" BENT ADJUSTABLE SLIDER MOUNT PLATE		HDG	10.11
3	AM1026-45.05	2	1/4" BENT ANGLE ARM PLATE		HDG	5.79
4	AM1026-45.06	1	BASE ANTENNA MOUNT WELDMENT		HDG	12.21
5	AM1029-U.01	2	UNIVERSAL TOWER LEG "L" BENT MOUNT PLATE			4.81
6	AM1029-U.02	2	UNIVERSAL ANGLE MOUNT PLATE			1.98
7	AMCS-5.01	4	1/2" PLATE		SEE W/O	2.25
8	27-5578-005	1	3/4" x 18" B7 HDG ALL-THREAD			2.25
9	27-5481-005	2	3/4" A36 HDG FLAT WASHER			0.09
10	27-5490-005	2	3/4" HDG LOCK WASHER			0.05
11	27-5501-005	2	3/4" HDG HEX NUT			0.14
12	TR58-8	9	5/8" x 8" A36 HDG ALL-THREAD			0.69
13	27-4404-005	4	5/8" x 2 1/4" GR.5 HDG BOLT			0.29
14	27-4403-005	4	5/8" x 2" GR.5 HDG BOLT			0.27
15	27-5370-005	18	5/8" A36 HDG FLAT WASHER			0.08
16	27-5380-005	26	5/8" HDG LOCK WASHER		HDG	0.03
17	27-5391-005	26	5/8" HDG HEX NUT		HDG	0.08

THIS DESIGN AND INFORMATION CONTAINED ON THIS PRINT IS THE PROPERTY OF VALLEY FAB CORPORATION. ANY REPRODUCTION, DUPLICATION OR TRANSFER OF THE PROPRIETARY CONTENT IS PROHIBITED WITHOUT WRITTEN PERMISSION.

STANDARD TOLERANCES:
 (UNLESS OTHERWISE NOTED)
 FRACTIONS - 1/16"
 DECIMALS - 0.01"
 ANGLES - 0.5°



TOTAL WT: 130.7 LB
 QTY:
 FINISH: HDG
 JOB #:

TITLE: ADJUSTABLE TAPERED PIPE MOUNT CLAMP FROM 2-3/8" TO 5-5/8" O.D ROUND
 SERIES: TOWER ANTENNA MOUNTING SHEET: 1 OF 1

DRAWN BY: JG DATE: 7/17/2018 CHK'D BY:
 DRAWING NO. AM1026-45

