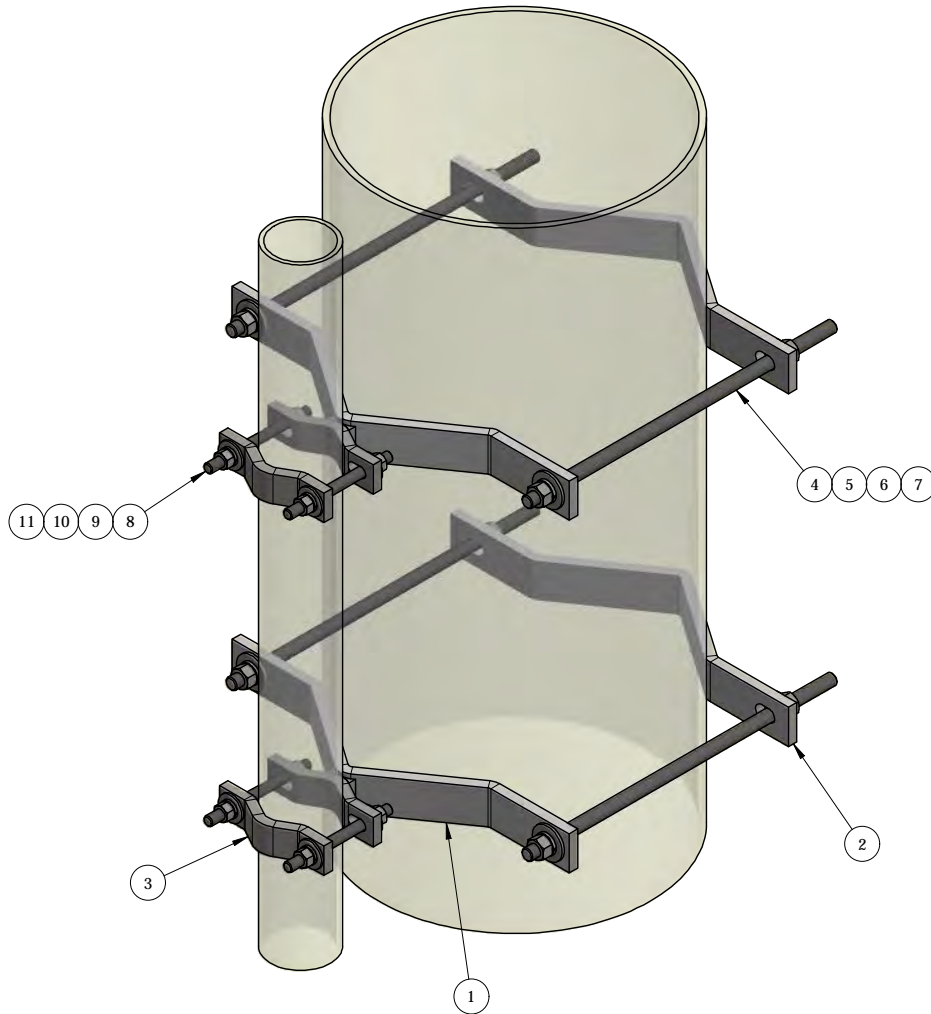


| REV | BY | DESCRIPTION                         | DATE      |
|-----|----|-------------------------------------|-----------|
| A   | KY | SEE MODEL I PROPERTIES/<br>COMMENTS | 9/10/2018 |

| ITEM | PART #        | DESCRIPTION  | QTY | UNIT WT |
|------|---------------|--|-----|---------|
| 1    | AM1032-116.01 | PIPE-TO-PIPE CLAMP WELDMENT 2-3/8" TO 16" O.D PIPE | 2   | 7.35    |
| 2    | AMCS-16.01    | HALF CLAMP FOR 8" TO 16" ROUND MEMBER              | 2   | 6.05    |
| 3    | AMCS-3.01     | HALF CLAMP FOR 1-1/2" TO 3-1/2" O.D ROUND          | 2   | 1.23    |
| 4    | 25- TR58-18   | GALV. 5/8" x 18" ALL-THREAD                        | 4   | 1.56    |
| 5    | 27-5370-005   | 5/8" A36 HDG FLAT WASHER                           | 8   | 0.08    |
| 6    | 27-5380-005   | 5/8" HDG LOCK WASHER                               | 8   | 0.03    |
| 7    | 27-5391-005   | 5/8" HDG HEX NUT                                   | 8   | 0.08    |
| 8    | TR12-6        | 1/2" x 6" HDG ALL-THREAD                           | 4   | 0.33    |
| 9    | 27-5200-005   | 1/2" A36 HDG FLAT WASHER                           | 8   | 0.04    |
| 10   | 27-5210-005   | 1/2" HDG LOCK WASHER                               | 8   | 0.01    |
| 11   | 27-5222-005   | 1/2" HDG HEX NUT                                   | 8   | 0.04    |



QTY:  
CHK:

**STANDARD TOLERANCES:**  
(UNLESS OTHERWISE NOTED)

FRACTIONS - 1/16"  
1 DECIMAL - .1"  
2 DECIMAL - .03"  
3 DECIMAL - .005"  
ANGLES - .5°

THIS DESIGN AND INFORMATION CONTAINED ON THIS PRINT IS THE PROPERTY OF NEWAVE TOWER COMPONENTS LLC. ANY REPRODUCTION, DUPLICATION OR TRANSFER OF THE PROPRIETARY CONTENT IS PROHIBITED WITHOUT WRITTEN PERMISSION.

**NEWAVE**  
 Tower Components. 503-792-3739  
 10910 PORTLAND RD. BROOKS, OR 97305

|           |          |             |    |
|-----------|----------|-------------|----|
| MATERIAL: |          | AS SHOWN    |    |
| GRADE:    | AS SHOWN | DRAWN BY:   | JG |
| FINISH:   | HDG      | CHECKED BY: | -  |

|   |                 |                     |  |
|---|-----------------|---------------------|--|
| TITLE:  |                 |                     |  |
| PIPE-TO-PIPE ADAPTORS, JOINS<br>1-1/2"-3-1/2" O.D W/ 8"-16" O.D ROUND |                 |                     |  |
| SERIES:   |                 | TOWER ANTENNA MOUNT |  |
| DATE:   | PART WT (BARE): | DRAWING NO.         |  |
| 1/8/2018  | 39.1 LB         | AM1032-116          |  |