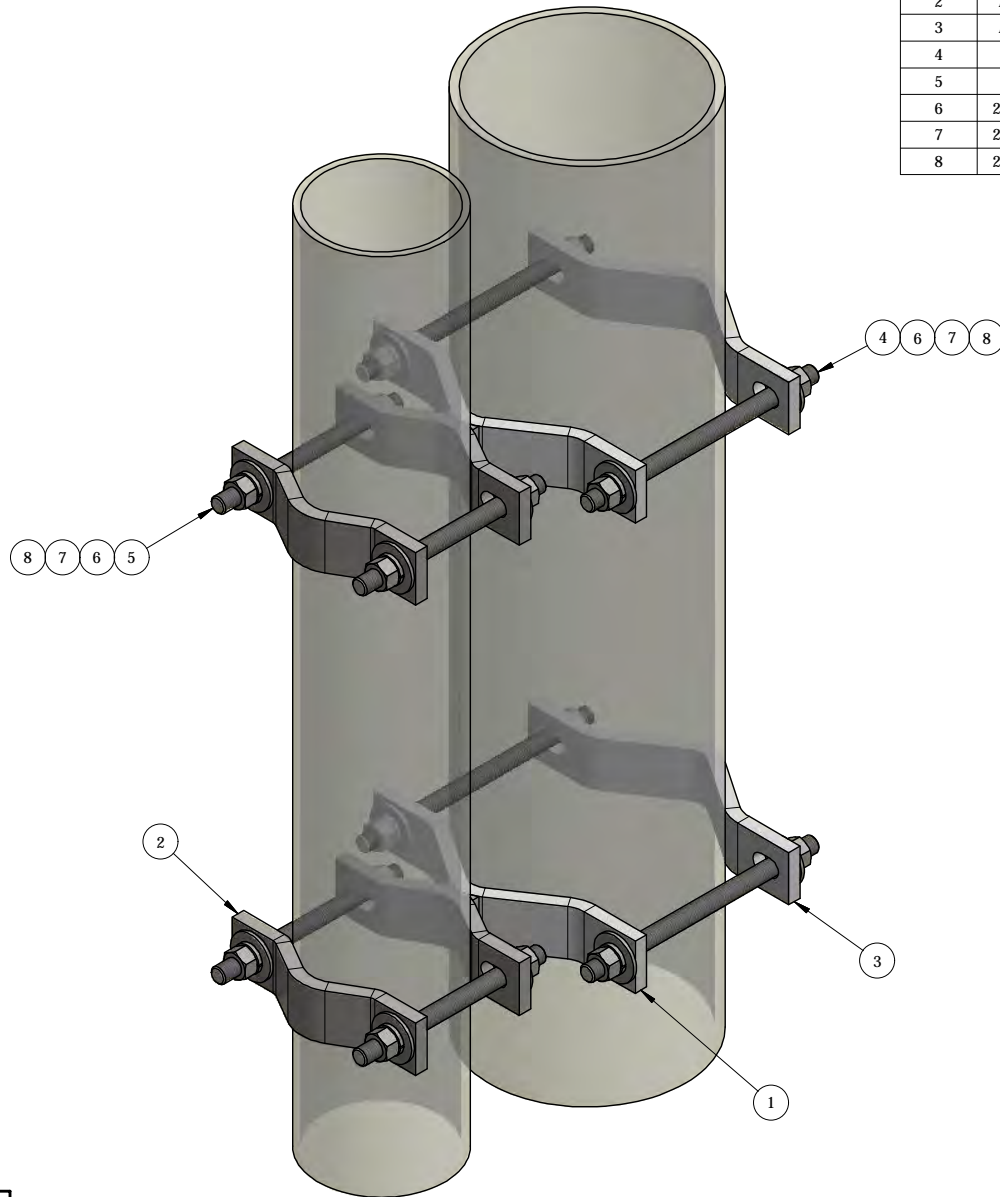


ITEM	PART #	DESCRIPTION	QTY	UNIT WT
1	AM1032-29.01	PIPE-TO-PIPE WELDMENT	2	5.64
2	AMCS-5.01	HALF CLAMP FOR 2-3/8" TO 5-1/2" ROUND MEMBER	2	2.24
3	AMCS-8.01	HALF CLAMP FOR 3-1/2" TO 8-5/8" ROUND MEMBER	2	3.38
4	TR58-10	GALV. 5/8" x 10" ALL-THREAD	4	0.87
5	TR58-8	GALV. 5/8" x 8" ALL-THREAD	4	0.69
6	27-5370-005	GALV. 5/8" FLAT WASHER	16	0.08
7	27-5380-005	GALV. 5/8" LOCK WASHER	16	0.03
8	27-5391-005	GALV. 5/8" HEX NUT	16	0.08



QTY:
CHK:

STANDARD TOLERANCES:
(UNLESS OTHERWISE NOTED)

FRACTIONS - 1/16"
1 DECIMAL - .1"
2 DECIMAL - .03"
3 DECIMAL - .005"
ANGLES - .5°

THIS DESIGN AND INFORMATION CONTAINED ON THIS PRINT IS THE PROPERTY OF NEWAVE TOWER COMPONENTS LLC. ANY REPRODUCTION, DUPLICATION OR TRANSFER OF THE PROPRIETARY CONTENT IS PROHIBITED WITHOUT WRITTEN PERMISSION.

NEWAVE
 Tower Components. 503-792-3739
 10910 PORTLAND RD. BROOKS, OR 97305

MATERIAL:		AS SHOWN		TITLE:	
GRADE:		AS SHOWN		PIPE-TO-PIPE ADAPTORS, JOIN 2-3/8" TO 5-1/2" O.D & 3-1/2" TO 8-5/8" O.D	
FINISH:		HDG		SERIES: TOWER ANTENNA MOUNT	
DRAWN BY:		KY		DATE:	PART WT (BARE):
CHECKED BY:		-		7/24/2017	31.75 LB
				DRAWING NO. AM1032-29	