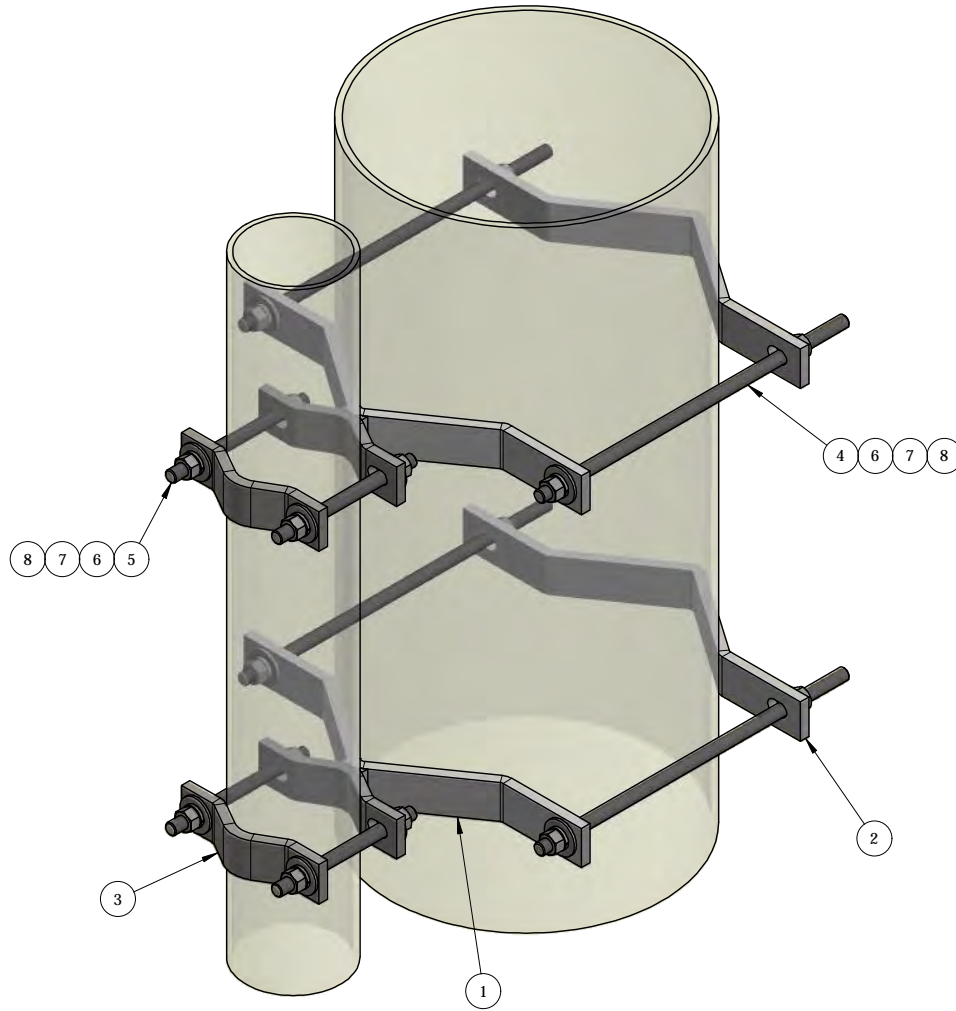


REV	BY	DESCRIPTION	DATE
A	KY	SEE MODEL IPROPERTIES/ COMMENTS	9/10/2018

ITEM	PART #	DESCRIPTION	QTY	UNIT WT
1	AM1032-516.01	PIPE-TO-PIPE CLAMP WELDMENT 2-3/8" TO 16" O.D PIPE	2	8.32
2	AMCS-16.01	HALF CLAMP FOR 8" TO 16" ROUND MEMBER	2	6.05
3	AMCS-5.01	HALF CLAMP FOR 2-3/8" TO 5-1/2" ROUND MEMBER	2	2.24
4	25- TR58-18	GALV. 5/8" x 18" ALL-THREAD	4	1.56
5	TR58-8	5/8" x 8" A36 HDG ALL-THREAD	4	0.69
6	27-5370-005	5/8" A36 HDG FLAT WASHER	16	0.08
7	27-5380-005	5/8" HDG LOCK WASHER	16	0.03
8	27-5391-005	5/8" HDG HEX NUT	16	0.08



QTY:
CHK:

STANDARD TOLERANCES:
(UNLESS OTHERWISE NOTED)

FRACTIONS - 1/16"
1 DECIMAL - .1"
2 DECIMAL - .03"
3 DECIMAL - .005"
ANGLES - .5°

THIS DESIGN AND INFORMATION CONTAINED ON THIS PRINT IS THE PROPERTY OF NEWAVE TOWER COMPONENTS LLC. ANY REPRODUCTION, DUPLICATION OR TRANSFER OF THE PROPRIETARY CONTENT IS PROHIBITED WITHOUT WRITTEN PERMISSION.

NEWAVE
Tower Components. 503-792-3739
10910 PORTLAND RD. BROOKS, OR 97305

MATERIAL:		AS SHOWN		TITLE:	
GRADE:		DRAWN BY:		PIPE-TO-PIPE ADAPTORS, JOINS	
AS SHOWN		JG		2-3/8"-5-1/2" O.D W/ 8"-16" O.D ROUND	
FINISH:		CHECKED BY:		SERIES:	
HDG		-		TOWER ANTENNA MOUNT	
		DATE:		PART WT (BARE):	
		11/22/2017		45.25 LB	
				DRAWING NO.	
				AM1032-516	