

ITEM	PART #	QTY	DESCRIPTION	LENGTH	FINISH	UNIT WT
1	AM2005.01L	1	V-FRAME WELDMENT (LEFT)		HDG	67.27
2	AM2005.01R	1	V-FRAME WELDMENT (RIGHT)		HDG	67.27
3	AMTB-CW1	2	ANTENNA MOUNT, TOWER BRACKET CLAMP		HDG	28.00
4	AMTB-BP2	2	3/8" PLATE		HDG	13.13
5	AMTB-FP1	2	1/2" PLATE		HDG	9.33
6	AMTB-BP1	2	1/2" PLATE		HDG	16.58
7	AM1030-23M.02	2	STIFF ARM HALF CLAMP WELDMENT		HDG	0.92
8	AM1030-23M.03	2	1/4" PLATE		SEE W/O	0.58
9	AM1031.03	4	1/4" PLATE		HDG	1.79
10	AM1031HD.03	4	3/16" PLATE		HDG	1.58
11	P278-156	2	2 1/2" STD PIPE	13'	HDG	75.39
12	P23-126	2	2" STD PIPE	10'-6"	HDG	38.40
13	TR58-18	8	5/8" x 18" B7 HDG ALL-THREAD	1'-6"		1.56
14	27-4404-005	10	5/8 x 2 1/4 GR.5 HDG BOLT			0.29
15	27-4403-005	10	5/8 x 2 GR.5 HDG BOLT			0.27
16	27-5370-005	10	5/8 A36 HDG FLAT WASHER			0.08
17	27-5380-005	36	5/8 HDG LOCK WASHER			0.03
18	27-5390-005	16	5/8 HDG HEAVY HEX NUT			0.13
19	27-5391-005	20	5/8" HDG HEX NUT			0.08
20	TR12-10	4	1/2" x 10" A36 HDG ALL-THREAD	10"		0.56
21	27-4310-005	4	GALV. 1/2" x 4" GR.5 FULL THREADED BOLT			0.27
22	27-4300-005	4	1/2" x 1 1/4" GR.5 HDG BOLT			0.12
23	27-5200-005	16	HDG - 1/2" FLAT WASHER, USS			0.04
24	27-5210-005	16	1/2 HDG LOCK WASHER			0.01
25	27-5222-005	16	1/2 HDG HEX NUT			0.04
26	27-6080-005	8	GALV. 1/2" x 3" x 5" GR-5 U-BOLT ASSEMBLY			0.89
27	27-6050-005	8	GALV. 3/8" x 2-1/2" x 4" U-BOLT ASSEMBLY			0.40

THIS DESIGN AND INFORMATION CONTAINED ON THIS PRINT IS THE PROPERTY OF VALLEY FAB CORPORATION. ANY REPRODUCTION, DUPLICATION OR TRANSFER OF THE PROPRIETARY CONTENT IS PROHIBITED WITHOUT WRITTEN PERMISSION.

**STANDARD TOLERANCES:**  
(UNLESS OTHERWISE NOTED)  
FRACTIONS ±1/16"  
DECIMALS ±0.01"  
ANGLES ±0.5°

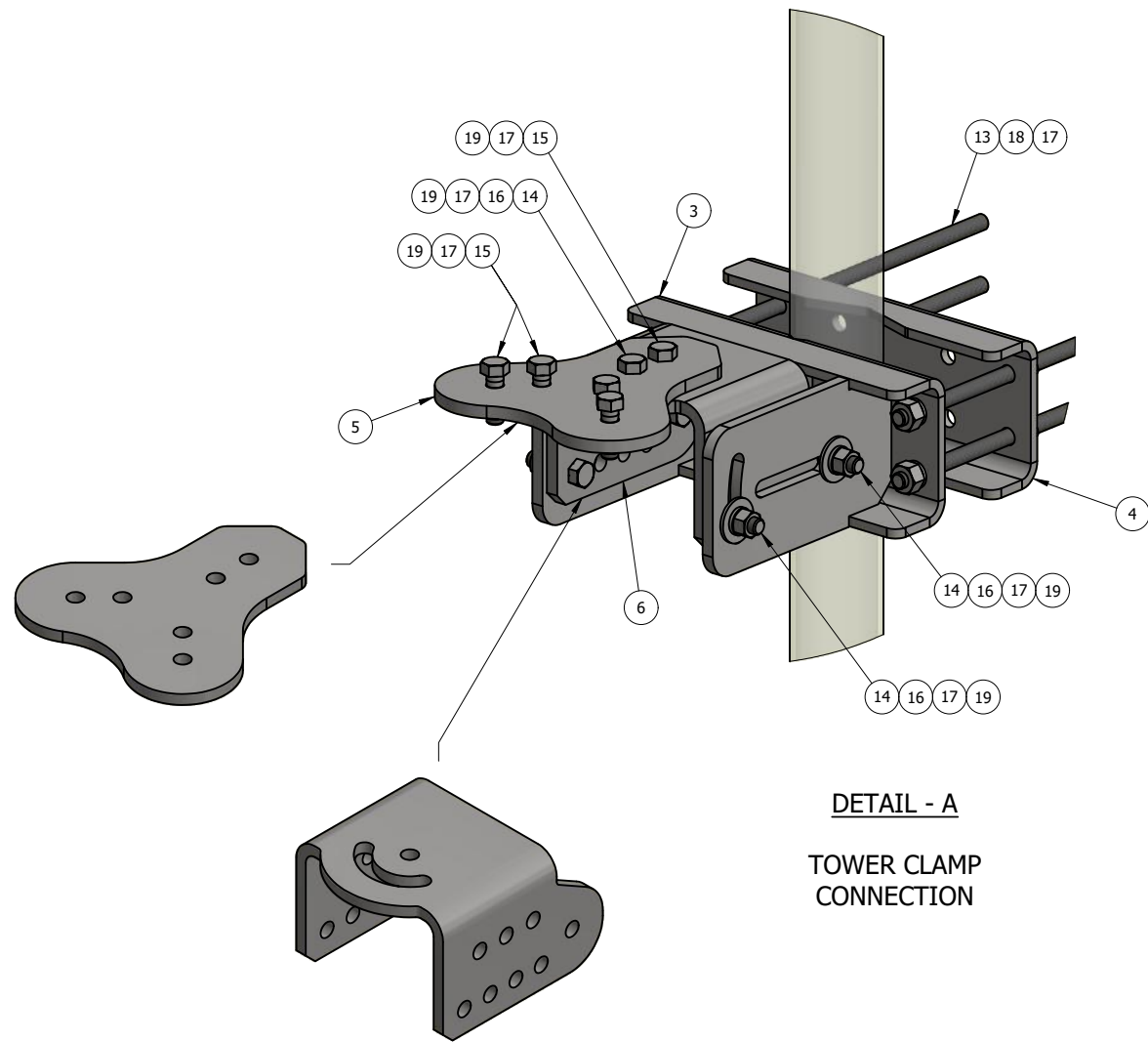
**NEWAVE**  
TOWER COMPONENTS, 503-792-3739  
10910 PORTLAND RD. BROOKS, OR 97305

TOTAL WT: 551.8 LB  
QTY:  
FINISH:  
JOB #:

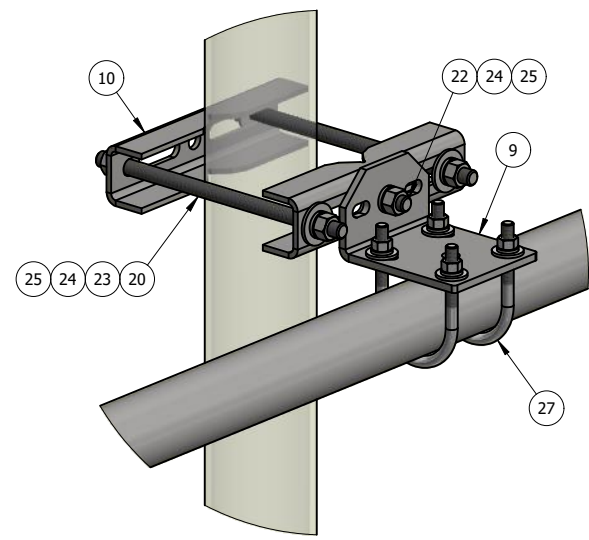
TITLE: 13'-0" FACE, V-FRAME, ADJ. TAPER, DBL STIFF-ARM FITS 1-1/2" TO 10-1/2" O.D ROUND LEG

SERIES: TOWER ANTENNA MOUNT SHEET: 1 OF 3

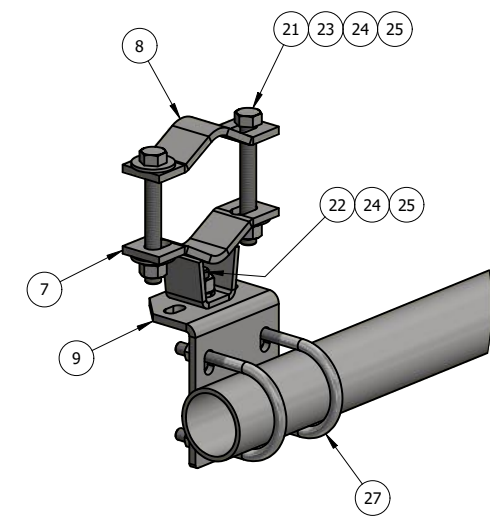
DRAWN BY: KY DATE: 6/2/2022 CHK'D BY: -  
DRAWING NO. AM2005-13HD



**DETAIL - A**  
TOWER CLAMP CONNECTION



**DETAIL - B**  
STIFF ARM  
TOWER LEG  
CONNECTION



**DETAIL - C**  
STIFF ARM  
PIPE FACE  
CONNECTION

ITEM	PART #	QTY	DESCRIPTION	LENGTH	FINISH	UNIT WT
1	AM2005.01L	1	V-FRAME WELDMENT (LEFT)		HDG	67.27
2	AM2005.01R	1	V-FRAME WELDMENT (RIGHT)		HDG	67.27
3	AMTB-CW1	2	ANTENNA MOUNT, TOWER BRACKET CLAMP		HDG	28.00
4	AMTB-BP2	2	3/8" PLATE		HDG	13.13
5	AMTB-FP1	2	1/2" PLATE		HDG	9.33
6	AMTB-BP1	2	1/2" PLATE		HDG	16.58
7	AM1030-23M.02	2	STIFF ARM HALF CLAMP WELDMENT		HDG	0.92
8	AM1030-23M.03	2	1/4" PLATE		SEE W/O	0.58
9	AM1031.03	4	1/4" PLATE		HDG	1.79
10	AM1031HD.03	4	3/16" PLATE		HDG	1.58
11	P278-156	2	2 1/2" STD PIPE	13'	HDG	75.39
12	P23-126	2	2" STD PIPE	10'-6"	HDG	38.40
13	TR58-18	8	5/8" x 18" B7 HDG ALL-THREAD	1'-6"		1.56
14	27-4404-005	10	5/8 x 2 1/4 GR.5 HDG BOLT			0.29
15	27-4403-005	10	5/8 x 2 GR.5 HDG BOLT			0.27
16	27-5370-005	10	5/8 A36 HDG FLAT WASHER			0.08
17	27-5380-005	36	5/8 HDG LOCK WASHER			0.03
18	27-5390-005	16	5/8 HDG HEAVY HEX NUT			0.13
19	27-5391-005	20	5/8" HDG HEX NUT			0.08
20	TR12-10	4	1/2" x 10" A36 HDG ALL-THREAD	10"		0.56
21	27-4310-005	4	GALV. 1/2" x 4" GR.5 FULL THREADED BOLT			0.27
22	27-4300-005	4	1/2" x 1 1/4" GR.5 HDG BOLT			0.12
23	27-5200-005	16	HDG - 1/2" FLAT WASHER, USS			0.04
24	27-5210-005	16	1/2 HDG LOCK WASHER			0.01
25	27-5222-005	16	1/2 HDG HEX NUT			0.04
26	27-6080-005	8	GALV. 1/2" x 3" x 5" GR-5 U-BOLT ASSEMBLY			0.89
27	27-6050-005	8	GALV. 3/8" x 2-1/2" x 4" U-BOLT ASSEMBLY			0.40

THIS DESIGN AND INFORMATION CONTAINED ON THIS PRINT IS THE PROPERTY OF VALLEY FAB CORPORATION. ANY REPRODUCTION, DUPLICATION OR TRANSFER OF THE PROPRIETARY CONTENT IS PROHIBITED WITHOUT WRITTEN PERMISSION.

**STANDARD TOLERANCES:**  
(UNLESS OTHERWISE NOTED)  
FRACTIONS ±1/16"  
DECIMALS ±0.01"  
ANGLES ±0.5°

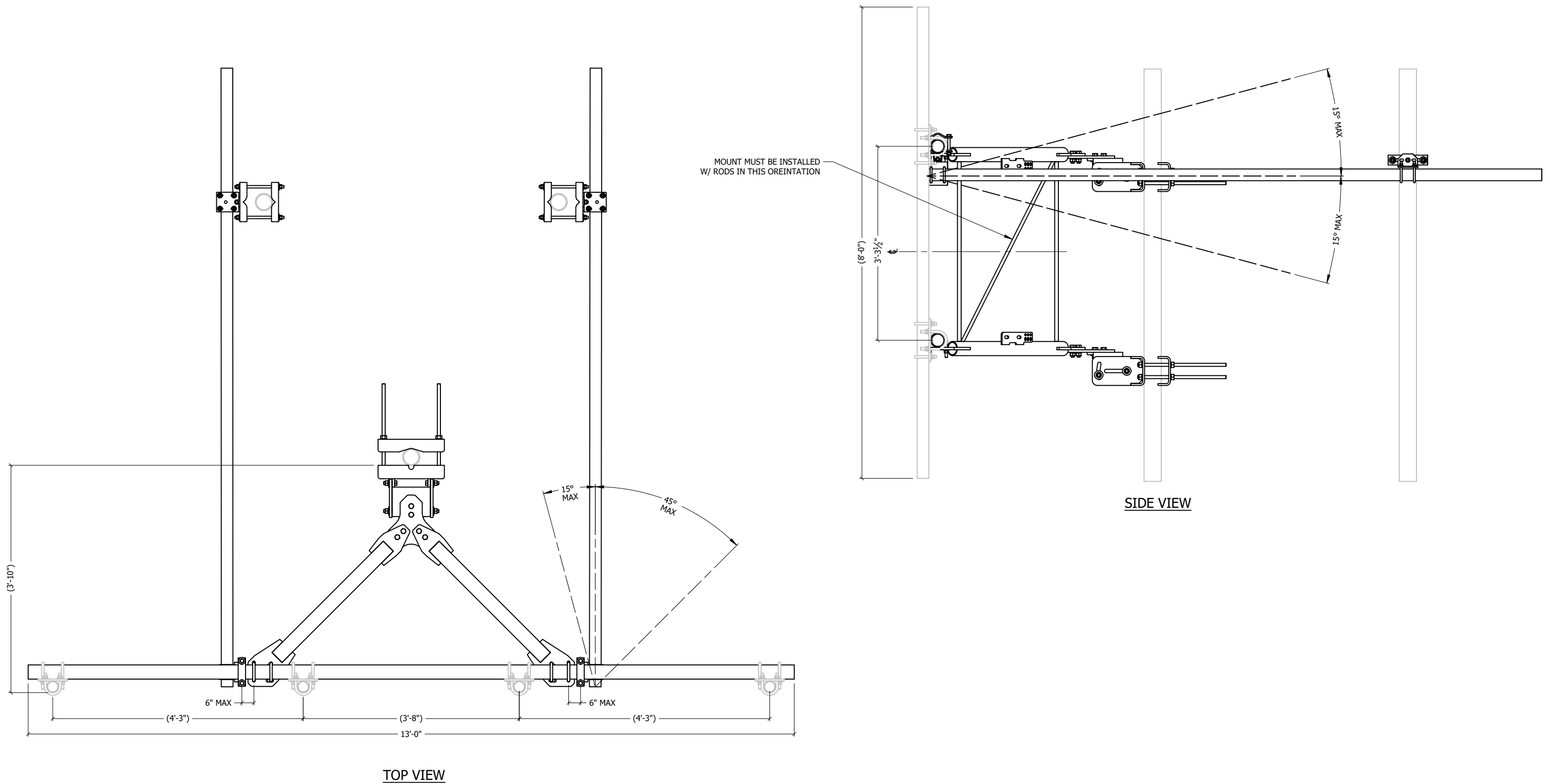
**NEWAVE**  
TOWER COMPONENTS, 503-792-3739  
10910 PORTLAND RD. BROOKS, OR 97305

TOTAL WT: 551.8 LB  
QTY:  
FINISH:  
JOB #:

TITLE: 13'-0" FACE, V-FRAME, ADJ. TAPER, DBL STIFF-ARM FITS 1-1/2" TO 10-1/2" O.D ROUND LEG

SERIES: TOWER ANTENNA MOUNT SHEET: 2 OF 3

DRAWN BY: KY DATE: 6/2/2022  
CHK'D BY: -  
DRAWING NO. AM2005-13HD



TOP VIEW

SIDE VIEW

<p>THIS DESIGN AND INFORMATION CONTAINED ON THIS PRINT IS THE PROPERTY OF VALLEY FAB CORPORATION. ANY REPRODUCTION, DUPLICATION OR TRANSFER OF THE PROPRIETARY CONTENT IS PROHIBITED WITHOUT WRITTEN PERMISSION.</p>	
<p><b>STANDARD TOLERANCES:</b> (UNLESS OTHERWISE NOTED) FRACTIONS ±1/16" DECIMALS ±0.01" ANGLES ±0.5°</p>	<p><b>NEWAVE</b> TOWER COMPONENTS, 503-792-3739 10910 PORTLAND RD. BROOKS, OR 97305</p>
<p>TOTAL WT: 551.8 LB</p>	<p>QTY:</p>
<p>FINISH:</p>	<p>JOB #:</p>

<p>TITLE: 13'-0" FACE, V-FRAME, ADJ. TAPER, DBL STIFF-ARM FITS 1-1/2" TO 10-1/2" O.D ROUND LEG</p>			<p>DRAWN BY: KY</p>	<p>DATE: 6/2/2022</p>	<p>CHK'D BY: -</p>
<p>SERIES: TOWER ANTENNA MOUNT</p>	<p>SHEET: 3 OF 3</p>	<p>DRAWING NO. AM2005-13HD</p>			