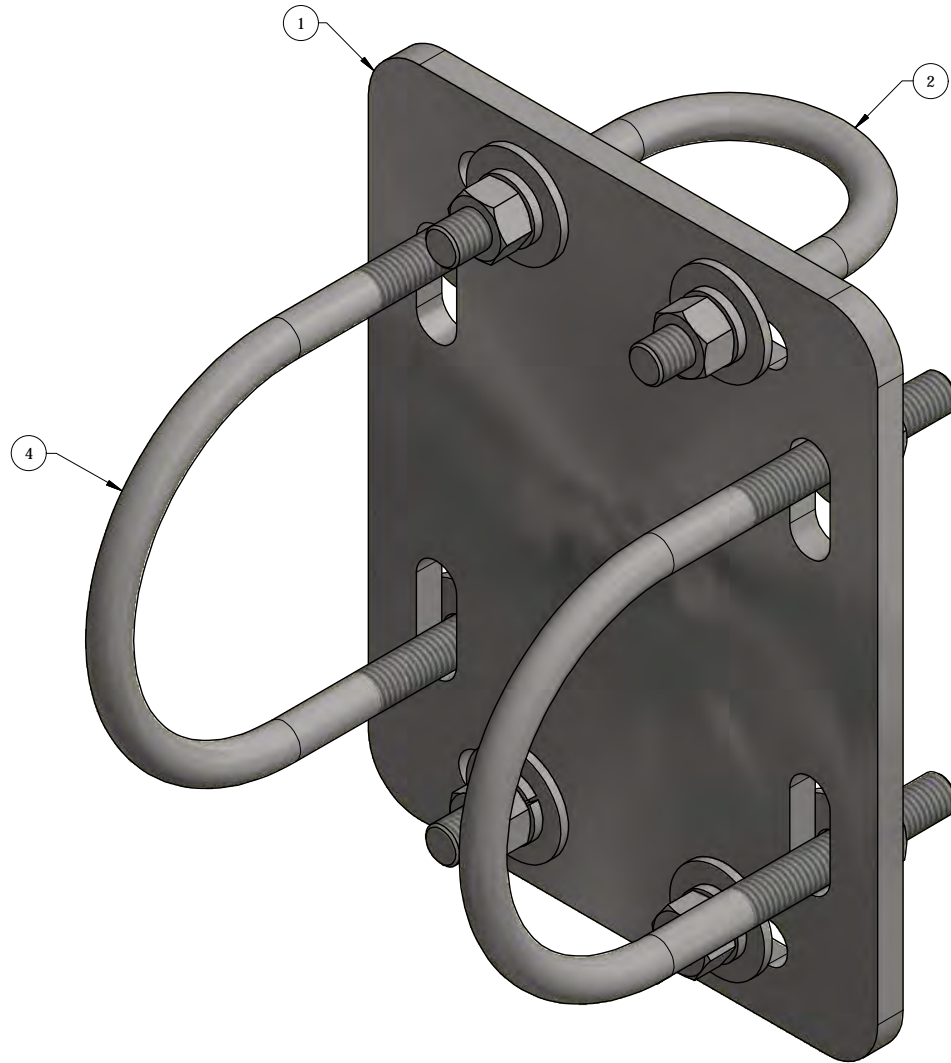


ITEM	QTY	PART NUMBER	DESCRIPTION
1	1	CXP2	2 3/8" to 4 1/2" CROSS OVER (3/8" PLATE)
2	2	27-6060-005	GALV. 1/2" x 2-1/2" x 4" GR-5 U-BOLT ASSEMBLY
4	2	27-6140-005	GALV. 1/2" x 4 5/8" x 6 1/2" U-BOLT ASSEMBLY



QTY:
CHK:

STANDARD TOLERANCES: (UNLESS OTHERWISE NOTED)	
FRACTIONS	- 1/16"
1 DECIMAL	- .1"
2 DECIMAL	- .03"
3 DECIMAL	- .005"
ANGLES	- .5S

THIS DESIGN AND INFORMATION CONTAINED ON THIS PRINT IS THE PROPERTY OF NEWAVE TOWER COMPONENTS LLC. ANY REPRODUCTION, DUPLICATION OR TRANSFER OF THE PROPRIETARY CONTENT IS PROHIBITED WITHOUT WRITTEN PERMISSION.

NEWAVE
 TOWER COMPONENTS, 503-792-3739
 10910 PORTLAND RD. BROOKS, OR 97305

MATERIAL:		AS SHOWN	
GRADE:	DRAWN BY:	JG	
FINISH:	CHECKED BY:	CW	

TITLE:				CROSS OVER PLATE ASSEMBLY 2 3/8" TO 4 1/2" O.D. PIPE	
SERIES:				MONOPOLE MOUNTING	
DATE:	PART WT (BARE):	DRAWING NO.			
12/1/2011	10.6 LB	CX24			