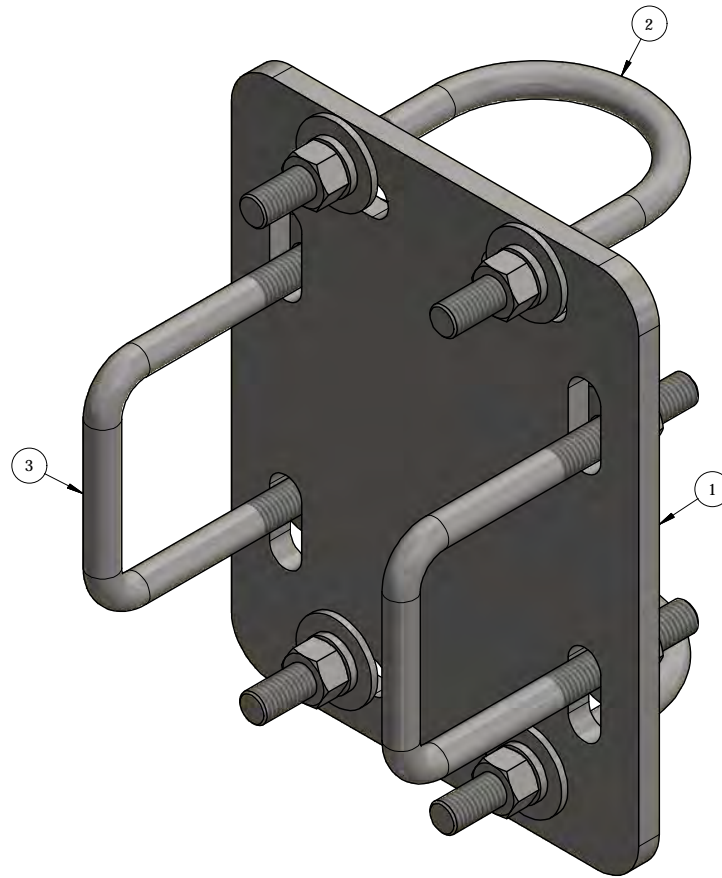


ITEM	PART #	DESCRIPTION	QTY	UNIT WT
1	CXP2	2 3/8" to 4 1/2" CROSS OVER (3/8" PLATE)	1	6.92
2	27-6080-005	GALV. 1/2" x 3" x 5" GR-5 U-BOLT ASSEMBLY	2	0.89
3	27-7000-005	GALV. 1/2" x 3-1/8" x 5" SQ. U-BOLT ASSEMBLY	2	0.95



QTY:
CHK:

STANDARD TOLERANCES:
(UNLESS OTHERWISE NOTED)

FRACTIONS - 1/16"
1 DECIMAL - .1"
2 DECIMAL - .03"
3 DECIMAL - .005"
ANGLES - .5°

THIS DESIGN AND INFORMATION CONTAINED ON THIS PRINT IS THE PROPERTY OF NEWAVE TOWER COMPONENTS LLC. ANY REPRODUCTION, DUPLICATION OR TRANSFER OF THE PROPRIETARY CONTENT IS PROHIBITED WITHOUT WRITTEN PERMISSION.

NEWAVE
TOWER COMPONENTS. 503-792-3739
10910 PORTLAND RD. BROOKS, OR 97305

MATERIAL:		AS SHOWN		TITLE:	
GRADE:		AS SHOWN		CROSS OVER PLATE ASSEMBLY	
FINISH:		HDG		2-7/8" O.D. PIPE TO 3" SQ TUBE	
DRAWN BY:		JG		SERIES: MONOPOLE MOUNTING	
CHECKED BY:		CJW		DATE:	DRAWING NO.
				12/21/2016	CX2783SQ
				PART WT (BARE):	
				10.6 LB	