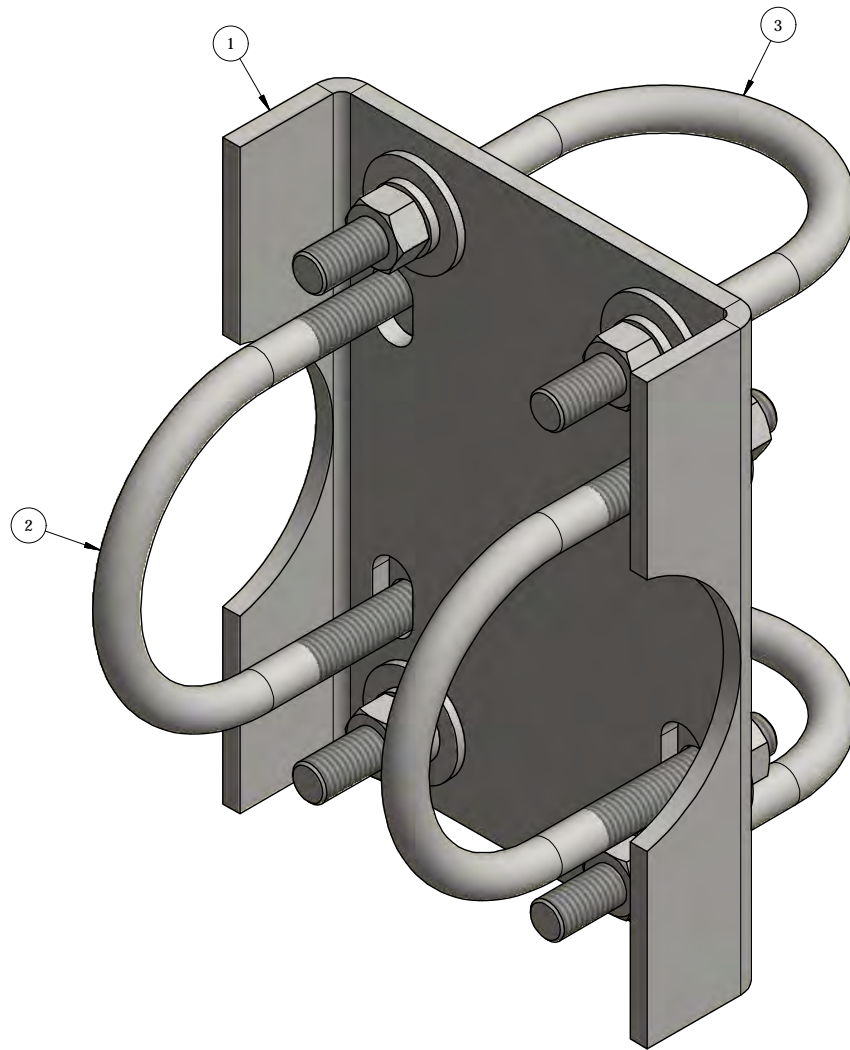


ITEM	PART #	DESCRIPTION	QTY	UNIT WT
1	CXCP1	2-3/8" TO 3-1/2" CROSS OVER BENT CHANNEL	1	4.67
2	27-6090-005	GALV. 1/2" x 3 5/8" x 5" U-BOLT ASSEMBLY	2	0.91
3	27-6080-005	GALV. 1/2" x 3" x 5" GR-5 U-BOLT ASSEMBLY	2	0.89



QTY:  
CHK:

**STANDARD TOLERANCES:**  
(UNLESS OTHERWISE NOTED)  
FRACTIONS - 1/16"  
DECIMALS - .005"  
ANGLES - .5°

THIS DESIGN AND INFORMATION CONTAINED ON THIS PRINT IS THE PROPERTY OF NEWAVE TOWER COMPONENTS LLC. ANY REPRODUCTION, DUPLICATION OR TRANSFER OF THE PROPRIETARY CONTENT IS PROHIBITED WITHOUT WRITTEN PERMISSION.

**NEWAVE**  
Tower Components. 503-792-3739  
10910 PORTLAND RD. BROOKS, OR 97305

MATERIAL: AS SHOWN	DRAWN BY: JG	TITLE: CHANNEL SUPPORT KIT FOR 2-7/8" TO 3-1/2" CROSS OVER		
HOLES: AS SHOWN	CHECKED BY: CJW	SERIES: MONOPOLE MOUNTING		
FINISH: HDG	DATE: 11/17/2014	PART WT (BARE): 8.3 LB	DRAWING NO. CXC2783	SHEET: 1 OF 1