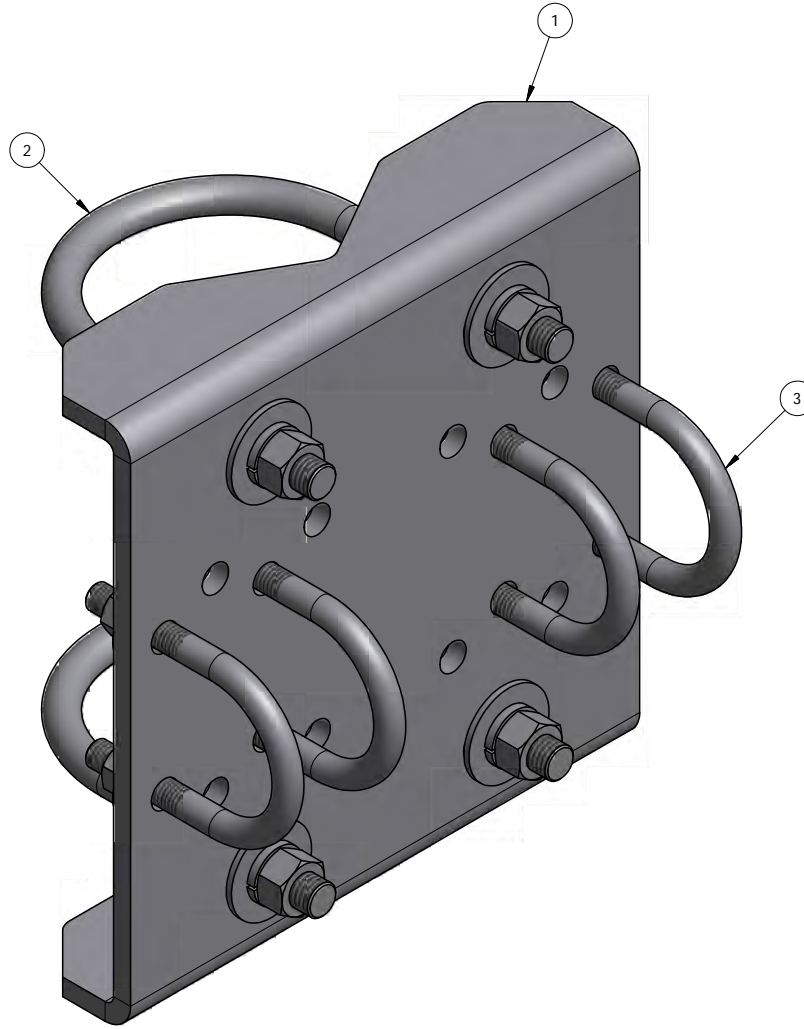


ITEM	PART #	DESCRIPTION	QTY	UNIT WT
1	CXVP-1	CELLULAR FACE MOUNT BENT PLATE	1	16.78
2	27-6235-005	GALV. 5/8" x 4-5/8" x 7" U-BOLT ASSEMBLY	2	1.89
3	27-6060-005	GALV. 1/2" x 2-1/2" x 4" U-BOLT ASSEMBLY	4	0.77



QTY:  
CHK:

**STANDARD TOLERANCES:**  
(UNLESS OTHERWISE NOTED)  
FRACTIONS ± 1/16"  
DECIMALS ± .005"  
ANGLES ± .5°

THIS DESIGN AND INFORMATION CONTAINED ON THIS PRINT IS THE PROPERTY OF NEWAVE TOWER COMPONENTS LLC. ANY REPRODUCTION, DUPLICATION OR TRANSFER OF THE PROPRIETARY CONTENT IS PROHIBITED WITHOUT WRITTEN PERMISSION.

**NEWAVE**  
Tower Components. 503-792-3739  
10910 PORTLAND RD. BROOKS, OR 97305

MATERIAL: AS SHOWN  
HOLES: AS SHOWN  
FINISH: HDG  
DRAWN BY: JG  
CHECKED BY: KY  
DATE: 4/24/2015

TITLE: CROSSOVER VERTICAL CONNECTION KIT FOR 2-3/8" TO 4-1/2" O.D PIPE  
SERIES: MONOPOLE MOUNTING  
PART WT (BARE): 23.6 LB  
DRAWING NO. CXV24  
SHEET: 1 OF 1