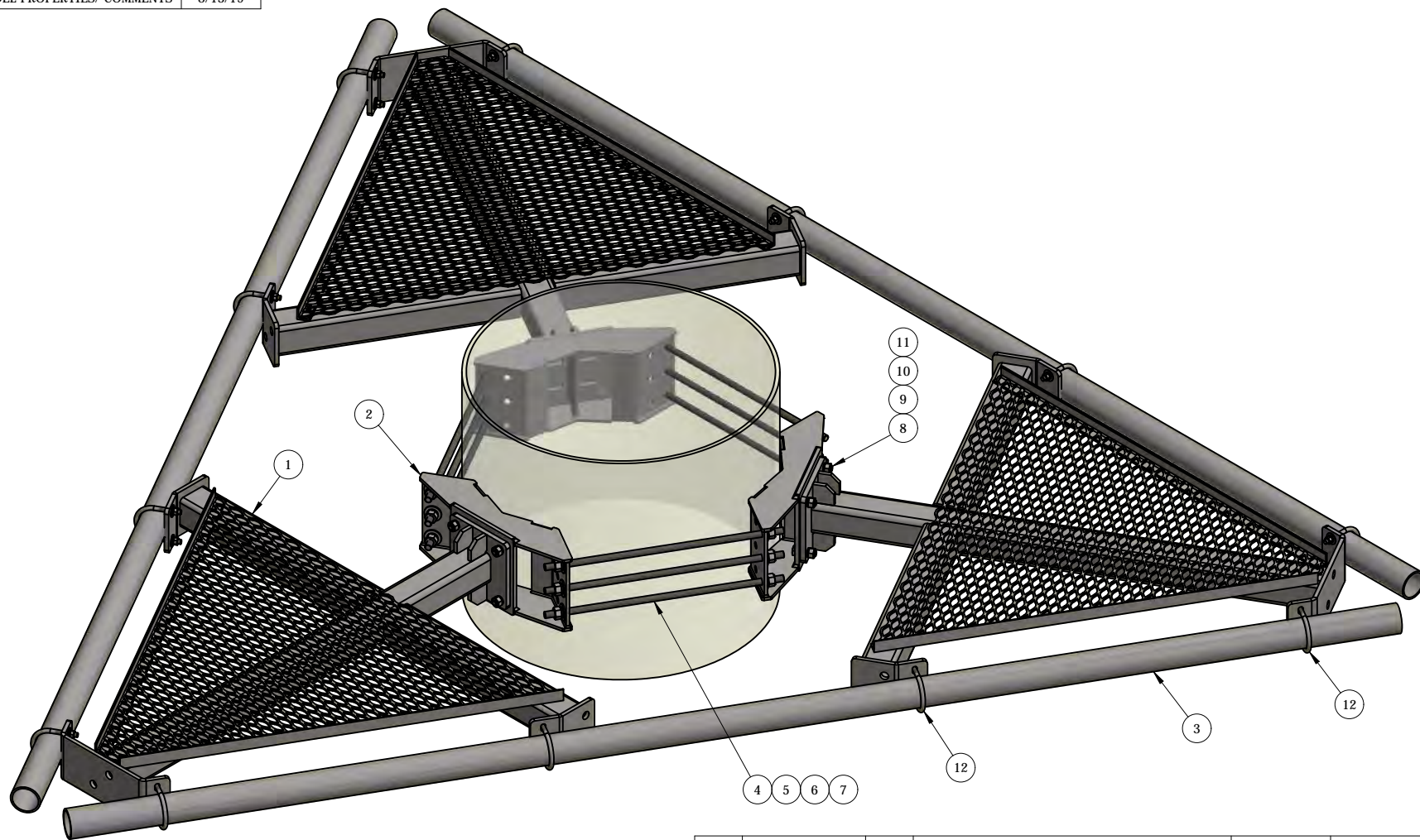


REV	BY	DESCRIPTION	DATE
B	KY	SEE MODEL PROPERTIES/ COMMENTS	8/13/19



ITEM	PART #	QTY	DESCRIPTION	LENGTH	FINISH	UNIT WT
1	LPCP-12HD.01	3	3-SECTOR L.P. MOUNT HEAVY DUTY WELDMENT		HDG	217.74
2	MF1236-3.01	3	UNIVERSAL 12" TO 36" RING MOUNT WELDMENT		HDG	50.60
3	P35-156	3	3" STD PIPE	13'	HDG	98.59
4	27-5580-005	9	3/4" x 28" B7 HDG ALL-THREAD	2'-4"		3.51
5	27-5481-005	18	3/4 A36 HDG FLAT WASHER			0.11
6	27-5490-005	18	3/4 HDG LOCK WASHER			0.04
7	27-5500-005	18	3/4 HDG HEAVY HEX NUT			0.21
8	27-5440-005	12	5/8" x 2 1/4" A325 HDG BOLT			0.30
9	27-5372-005	12	5/8 F436 HDG FLAT WASHER			0.05
10	27-5380-005	12	5/8 HDG LOCK WASHER			0.03
11	27-5390-005	12	5/8 HDG HEAVY HEX NUT			0.13
12	27-6090-005	12	GALV. 1/2" x 3 5/8" x 5" U-BOLT ASSEMBLY			0.90

THIS DESIGN AND INFORMATION CONTAINED ON THIS PRINT IS THE PROPERTY OF VALLEY FAB CORPORATION. ANY REPRODUCTION, DUPLICATION OR TRANSFER OF THE PROPRIETARY CONTENT IS PROHIBITED WITHOUT WRITTEN PERMISSION.

STANDARD TOLERANCES:

(UNLESS OTHERWISE NOTED)

FRACTIONS - 1/16"
 DECIMALS - 0.01"
 ANGLES - 0.5°



TOWER COMPONENTS. 503-792-3739
 10910 PORTLAND RD. BROOKS, OR 97305

TOTAL WT: 1155.3 LB

QTY:

FINISH:

JOB #:

TITLE:

3-SECTOR LOW PROFILE PLATFORM
 W/ 13'-0" FACE, FITS 12" TO 36" POLE

SERIES: MONOPOLE MOUNTING

SHEET: 1 OF 1

DRAWN BY:

JR

DATE:

11/16/2018

CHK'D BY:

KY

DRAWING NO.

LPCP-12