

| ITEM | PART #          | DESCRIPTION   | QTY | UNIT WT |
|------|-----------------|---|-----|---------|
| 1    | LPCP-12Q-LT1.01 | 4-SECTOR PLTAFORM, LATTICE TOWER, MIDDLE FRAME WELDMENT | 4   | 81.98   |
| 2    | LPCP-12Q-LT1.06 | 120S FORMED W-BEAM SECTOR                               | 3   | 309.42  |
| 3    | LPCP-12Q-LT1.08 | HSS 5"x5"x1/4" TUBE @ 5'-4 1/2" LONG                    | 3   | 83.69   |
| 4    | LPCP-12Q-LT1.09 | PLATFORM, LATTICE TOWER STANDOFF SUPPORT WELDMENT       | 3   | 49.83   |
| 5    | LPCP-12Q-LT1.11 | 1/2 PLATE   | 7   | 7.80    |
| 6    | LPCP-12Q-LT1.12 | 4-SECTOR PLATFORM, CHANNEL STIFFENER WELDMENT           | 4   | 43.52   |
| 7    | LPCP-14Q-LT1.06 | 5/8 PLATE   | 3   | 10.38   |
| 8    | LPCP-14Q-LT1.07 | UPPER TOWER CONNECTION SWIVEL WELDMENT                  | 3   | 22.82   |
| 9    | LPCP-14Q-LT1.10 | LOWER TOWER CONNECTION SWIVEL WELDMENT                  | 3   | 22.90   |
| 10   | LPCP-14Q-LT1.13 | 4-SECTOR PLATFORM, LATTICE TOWER, CORNER FRAME WELDMENT | 4   | 292.93  |
| 11   | LPCP-14Q-LT1.30 | LATIC TOWER BACK CLAMP                                  | 6   | 12.25   |
| 12   | P278X-120       | 2 1/2 XS PIPE (HDG) @ 120 LONG                          | 16  | 76.69   |
| 13   | P23X-150        | 2 XS PIPE (HDG) @ 150 LONG                              | 4   | 62.84   |
| 14   | CX2783          | CROSSOVER KIT FOR 2-7/8" O.D. TO 3-1/2" O.D. PIPE       | 16  | 8.42    |
| 15   | CXP1            | CROSS OVER PLATE 2-3/8" TO 3-1/2" O.D PIPE (3/8" PLATE) | 16  | 4.81    |
| 16   | LPHK.05         | 1/2" BENT TRI-SECTOR HANDRAIL CORNER PLATE              | 4   | 23.40   |
| 17   | 27-5730-005     | 1" x 12" B7 HDG ALL-THREAD                              | 12  | 2.67    |
| 18   | 27-5720-005     | 1" F436 HDG FLAT WASHER                                 | 24  | 0.11    |
| 19   | 27-5710-005     | 1" HDG LOCK WASHER                                      | 24  | 0.09    |
| 20   | 27-5700-005     | 1" HDG HEAVY HEX NUT                                    | 24  | 0.47    |
| 21   | 27-5578-005     | 3/4" x 18" B7 HDG ALL-THREAD                            | 12  | 2.25    |
| 22   | 27-5480-005     | 3/4" F436 HDG FLAT WASHER                               | 24  | 0.06    |
| 23   | 27-5490-005     | 3/4" HDG LOCK WASHER                                    | 24  | 0.04    |
| 24   | 27-5500-005     | 3/4" HDG HEAVY HEX NUT                                  | 24  | 0.21    |
| 25   | TR58-10         | 5/8" x 10" B7 HDG ALL-THREAD                            | 52  | 0.87    |
| 26   | 27-5430-005     | 5/8" x 2" A325 HDG BOLT                                 | 44  | 0.28    |
| 27   | 27-5372-005     | 5/8" F436 HDG FLAT WASHER                               | 104 | 0.05    |
| 28   | 27-5380-005     | 5/8" HDG LOCK WASHER                                    | 148 | 0.03    |
| 29   | 27-5390-005     | 5/8" HDG HEAVY HEX NUT                                  | 148 | 0.13    |
| 30   | 27-7000-005     | GALV. 1/2" x 3-1/8" x 5" SQ. U-BOLT ASSEMBLY            | 16  | 0.95    |
| 31   | 27-6080-005     | GALV. 1/2" x 3" x 5" GR-5 U-BOLT ASSEMBLY               | 32  | 0.89    |
| 32   | 27-6060-005     | GALV. 1/2" x 2-1/2" x 4" GR-5 U-BOLT ASSEMBLY           | 48  | 0.76    |

QTY:  
CHK:

**STANDARD TOLERANCES:**  
(UNLESS OTHERWISE NOTED)

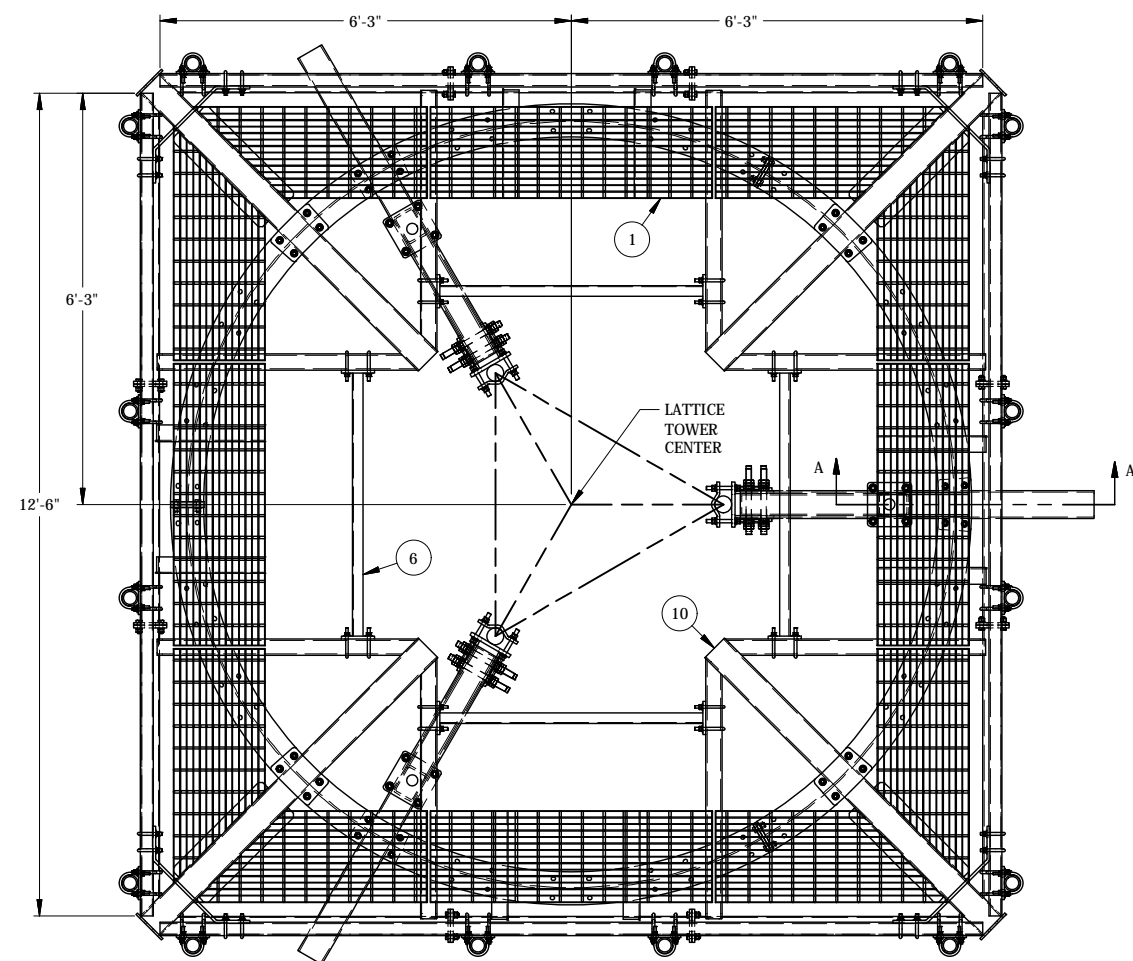
|           |         |
|-----------|---------|
| FRACTIONS | - 1/16" |
| 1 DECIMAL | - .1"   |
| 2 DECIMAL | - .03"  |
| 3 DECIMAL | - .005" |
| ANGLES    | - .5S   |

THIS DESIGN AND INFORMATION CONTAINED ON THIS PRINT IS THE PROPERTY OF NEWAVE TOWER COMPONENTS LLC. ANY REPRODUCTION, DUPLICATION OR TRANSFER OF THE PROPRIETARY CONTENT IS PROHIBITED WITHOUT WRITTEN PERMISSION.

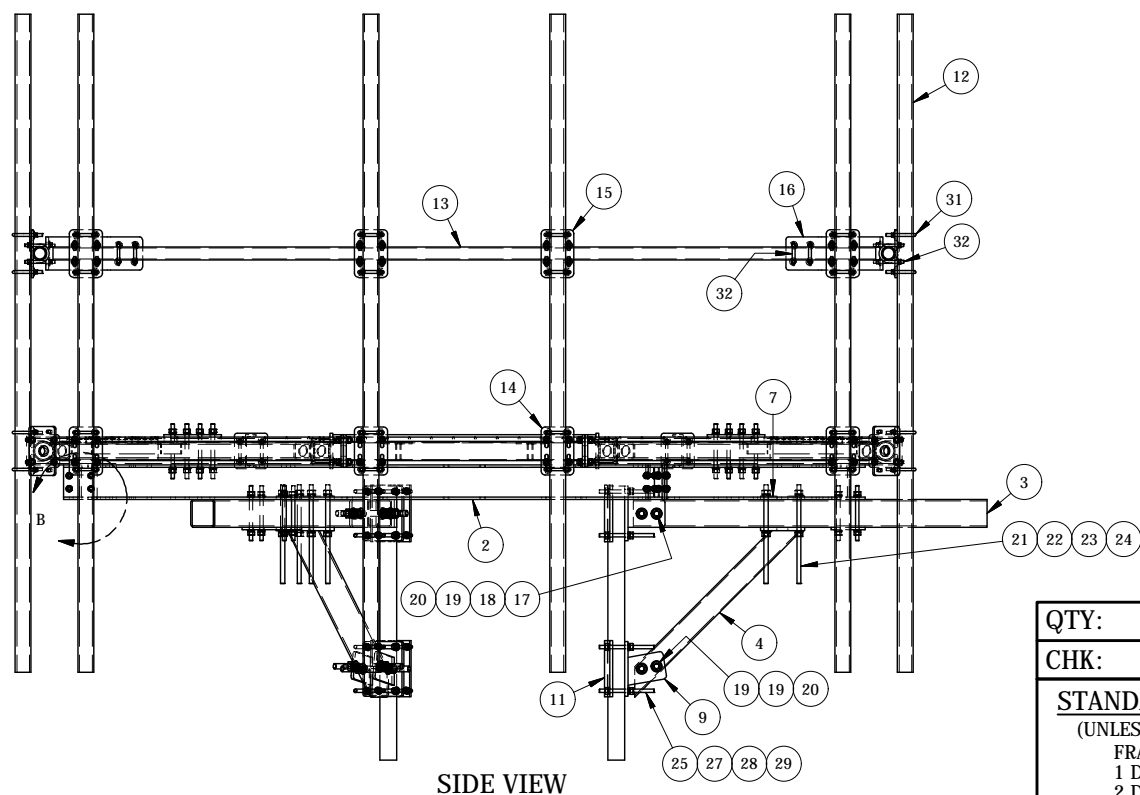
**NEWAVE**  
Tower Components. 503-792-3739  
10910 PORTLAND RD. BROOKS, OR 97305

|           |              |
|-----------|--------------|
| MATERIAL: | SEE DETAILS  |
| GRADE:    | DRAWN BY: JG |
| FINISH:   | CHECKED BY:  |
| HDG       |              |

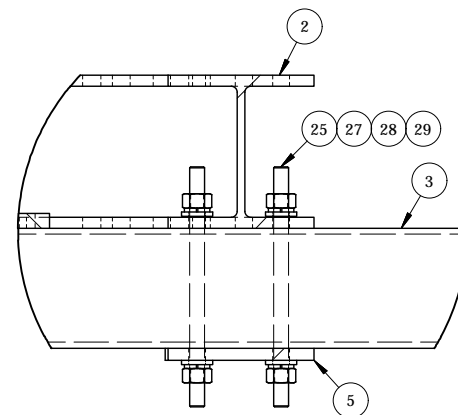
|             |  |                 |           |
|-------------|--|-----------------|-----------|
| TITLE:      | 4-SECTOR 12' PLATFORM W/ HANDRAIL KIT FOR 3-SIDED LATTICE TOWER (24" - 56" FACE) |                 |           |
| SERIES:     | MONOPOLE MOUNTING  |                 |           |
| DATE:       | 4/18/2017  | PART WT (BARE): | 5331.8 LB |
| DRAWING NO. | LPCP-12Q-LT1   |                 |           |



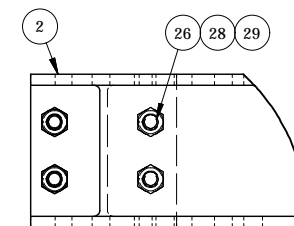
TOP VIEW



SIDE VIEW



DETAIL A



DETAIL B

| ITEM | PART #          | DESCRIPTION   | QTY | UNIT WT |
|------|-----------------|---|-----|---------|
| 1    | LPCP-12Q-LT1.01 | 4-SECTOR PLTAFORM, LATTICE TOWER, MIDDLE FRAME WELDMENT | 4   | 81.98   |
| 2    | LPCP-12Q-LT1.06 | 120S FORMED W-BEAM SECTOR                               | 3   | 309.42  |
| 3    | LPCP-12Q-LT1.08 | HSS 5"x5"x1/4" TUBE @ 5'-4 1/2" LONG                    | 3   | 83.69   |
| 4    | LPCP-12Q-LT1.09 | PLATFORM, LATTICE TOWER STANDOFF SUPPORT WELDMENT       | 3   | 49.83   |
| 5    | LPCP-12Q-LT1.11 | 1/2 PLATE   | 7   | 7.80    |
| 6    | LPCP-12Q-LT1.12 | 4-SECTOR PLATFORM, CHANNEL STIFFENER WELDMENT           | 4   | 43.52   |
| 7    | LPCP-14Q-LT1.06 | 5/8 PLATE   | 3   | 10.38   |
| 8    | LPCP-14Q-LT1.07 | UPPER TOWER CONNECTION SWIVEL WELDMENT                  | 3   | 22.82   |
| 9    | LPCP-14Q-LT1.10 | LOWER TOWER CONNECTION SWIVEL WELDMENT                  | 3   | 22.90   |
| 10   | LPCP-14Q-LT1.13 | 4-SECTOR PLATFORM, LATTICE TOWER, CORNER FRAME WELDMENT | 4   | 292.93  |
| 11   | LPCP-14Q-LT1.30 | LATIC TOWER BACK CLAMP                                  | 6   | 12.25   |
| 12   | P278X-120       | 2 1/2 XS PIPE (HDG) @ 120 LONG                          | 16  | 76.69   |
| 13   | P23X-150        | 2 XS PIPE (HDG) @ 150 LONG                              | 4   | 62.84   |
| 14   | CX2783          | CROSSOVER KIT FOR 2-7/8" O.D. TO 3-1/2" O.D. PIPE       | 16  | 8.42    |
| 15   | CXP1            | CROSS OVER PLATE 2-3/8" TO 3-1/2" O.D PIPE (3/8" PLATE) | 16  | 4.81    |
| 16   | LPHK.05         | 1/2" BENT TRI-SECTOR HANDRAIL CORNER PLATE              | 4   | 23.40   |
| 17   | 27-5730-005     | 1" x 12" B7 HDG ALL-THREAD                              | 12  | 2.67    |
| 18   | 27-5720-005     | 1" F436 HDG FLAT WASHER                                 | 24  | 0.11    |
| 19   | 27-5710-005     | 1" HDG LOCK WASHER                                      | 24  | 0.09    |
| 20   | 27-5700-005     | 1" HDG HEAVY HEX NUT                                    | 24  | 0.47    |
| 21   | 27-5578-005     | 3/4" x 18" B7 HDG ALL-THREAD                            | 12  | 2.25    |
| 22   | 27-5480-005     | 3/4" F436 HDG FLAT WASHER                               | 24  | 0.06    |
| 23   | 27-5490-005     | 3/4" HDG LOCK WASHER                                    | 24  | 0.04    |
| 24   | 27-5500-005     | 3/4" HDG HEAVY HEX NUT                                  | 24  | 0.21    |
| 25   | TR58-10         | 5/8" x 10" B7 HDG ALL-THREAD                            | 52  | 0.87    |
| 26   | 27-5430-005     | 5/8" x 2" A325 HDG BOLT                                 | 44  | 0.28    |
| 27   | 27-5372-005     | 5/8" F436 HDG FLAT WASHER                               | 104 | 0.05    |
| 28   | 27-5380-005     | 5/8" HDG LOCK WASHER                                    | 148 | 0.03    |
| 29   | 27-5390-005     | 5/8" HDG HEAVY HEX NUT                                  | 148 | 0.13    |
| 30   | 27-7000-005     | GALV. 1/2" x 3-1/8" x 5" SQ. U-BOLT ASSEMBLY            | 16  | 0.95    |
| 31   | 27-6080-005     | GALV. 1/2" x 3" x 5" GR-5 U-BOLT ASSEMBLY               | 32  | 0.89    |
| 32   | 27-6060-005     | GALV. 1/2" x 2-1/2" x 4" GR-5 U-BOLT ASSEMBLY           | 48  | 0.76    |

QTY:  
CHK:

**STANDARD TOLERANCES:**  
(UNLESS OTHERWISE NOTED)  
FRACTIONS - 1/16"  
1 DECIMAL - .1"  
2 DECIMAL - .03"  
3 DECIMAL - .005"  
ANGLES - .5s

THIS DESIGN AND INFORMATION CONTAINED ON THIS PRINT IS THE PROPERTY OF NEWAVE TOWER COMPONENTS LLC. ANY REPRODUCTION, DUPLICATION OR TRANSFER OF THE PROPRIETARY CONTENT IS PROHIBITED WITHOUT WRITTEN PERMISSION.

**NEWAVE**  
Tower Components, 503-792-3739  
10910 PORTLAND RD. BROOKS, OR 97305

MATERIAL: SEE DETAILS  
GRADE: SEE DETAILS  
FINISH: HDG  
DRAWN BY: JG  
CHECKED BY: CJW

TITLE: 4-SECTOR 12' PLATFORM W/ HANDRAIL KIT FOR 3-SIDED LATTICE TOWER (24" - 56" FACE)  
SERIES: MONOPOLE MOUNTING  
DATE: 4/18/2017  
PART WT (BARE): 5331.8 LB  
DRAWING NO. LPCP-12Q-LT1