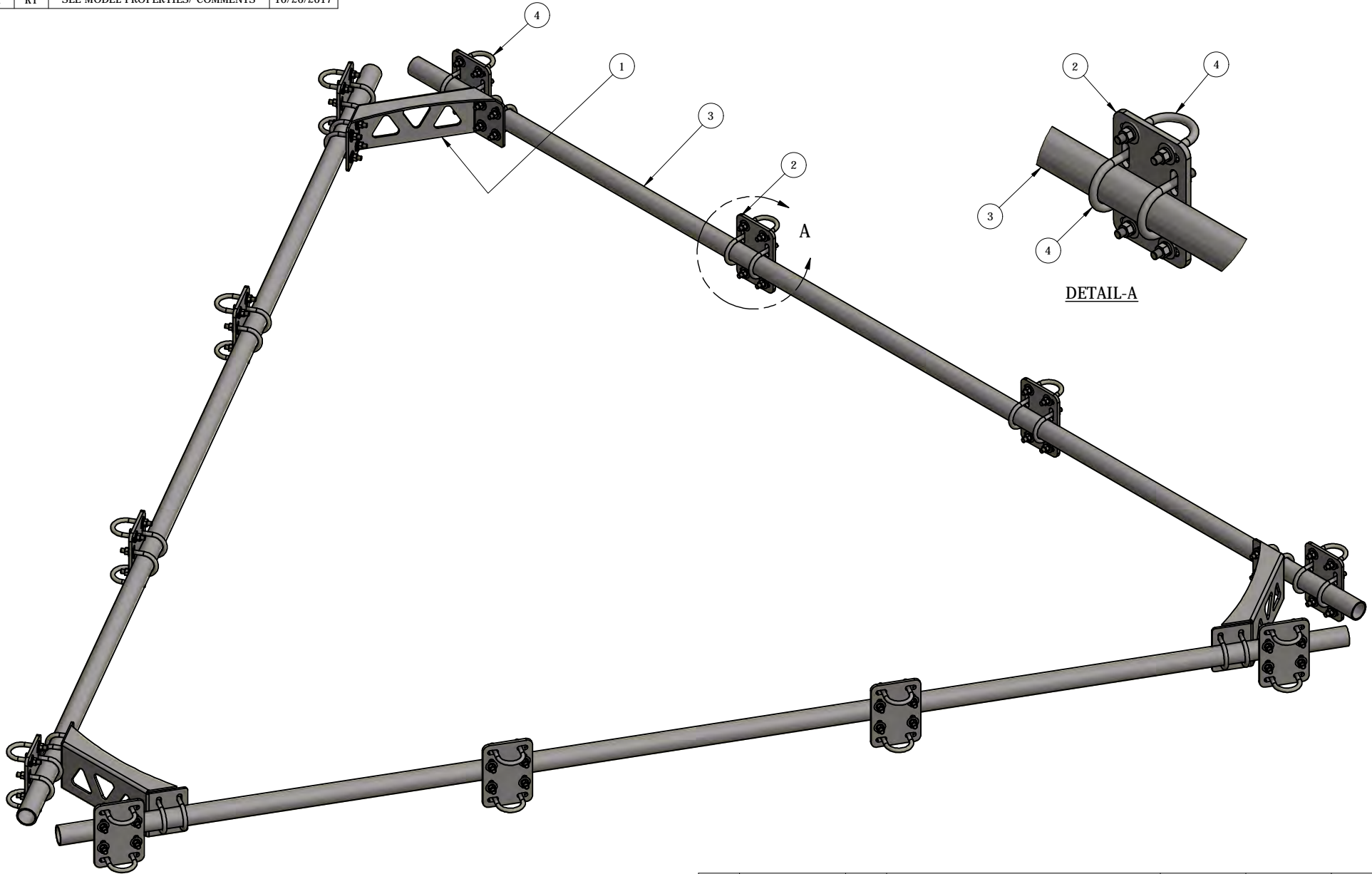


| REV | BY | DESCRIPTION                    | DATE       |
|-----|----|--------------------------------|------------|
| A   | KY | SEE MODEL PROPERTIES/ COMMENTS | 10/26/2017 |



THIS DESIGN AND INFORMATION CONTAINED ON THIS PRINT IS THE PROPERTY OF VALLEY FAB CORPORATION. ANY REPRODUCTION, DUPLICATION OR TRANSFER OF THE PROPRIETARY CONTENT IS PROHIBITED WITHOUT WRITTEN PERMISSION.

**STANDARD TOLERANCES:**  
 (UNLESS OTHERWISE NOTED)  
 FRACTIONS - 1/16"  
 DECIMALS - 0.01"  
 ANGLES - 0.5°

**NEWAVE**  
 TOWER COMPONENTS. 503-792-3739  
 10910 PORTLAND RD. BROOKS, OR 97305

TOTAL WT: 279.75 LB

QTY:

FINISH:

JOB #:

| ITEM | PART #      | QTY | DESCRIPTION                                   | LENGTH | FINISH | UNIT WT |
|------|-------------|-----|---|--------|--------|---------|
| 1    | LPHK.01     | 3   | 1/4" PLATE                                    |        | HDG    | 11.30   |
| 2    | CXP1        | 12  | 3/8" PLATE                                    |        | HDG    | 4.81    |
| 3    | P23-156     | 3   | 2" STD PIPE                                   | 13'    | HDG    | 47.54   |
| 4    | 27-6060-005 | 60  | GALV. 1/2" x 2-1/2" x 4" GR-5 U-BOLT ASSEMBLY |        |        | 0.76    |

|  |  |  |                     |                 |              |
|--|--|--|---------------------|-----------------|--------------|
| TITLE: 3-SECTOR LOW-PROFILE HANDRAIL KIT FOR UP TO 13'-0" FACE |  |  | DRAWN BY: JG        | DATE: 7/17/2018 | CHK'D BY: KY |
| SERIES: MONOPOLE MOUNTING                                      |  |  | DRAWING NO. LPHK-12 |                 |              |
| SHEET: 1 OF 1  |  |  |                     |                 |              |