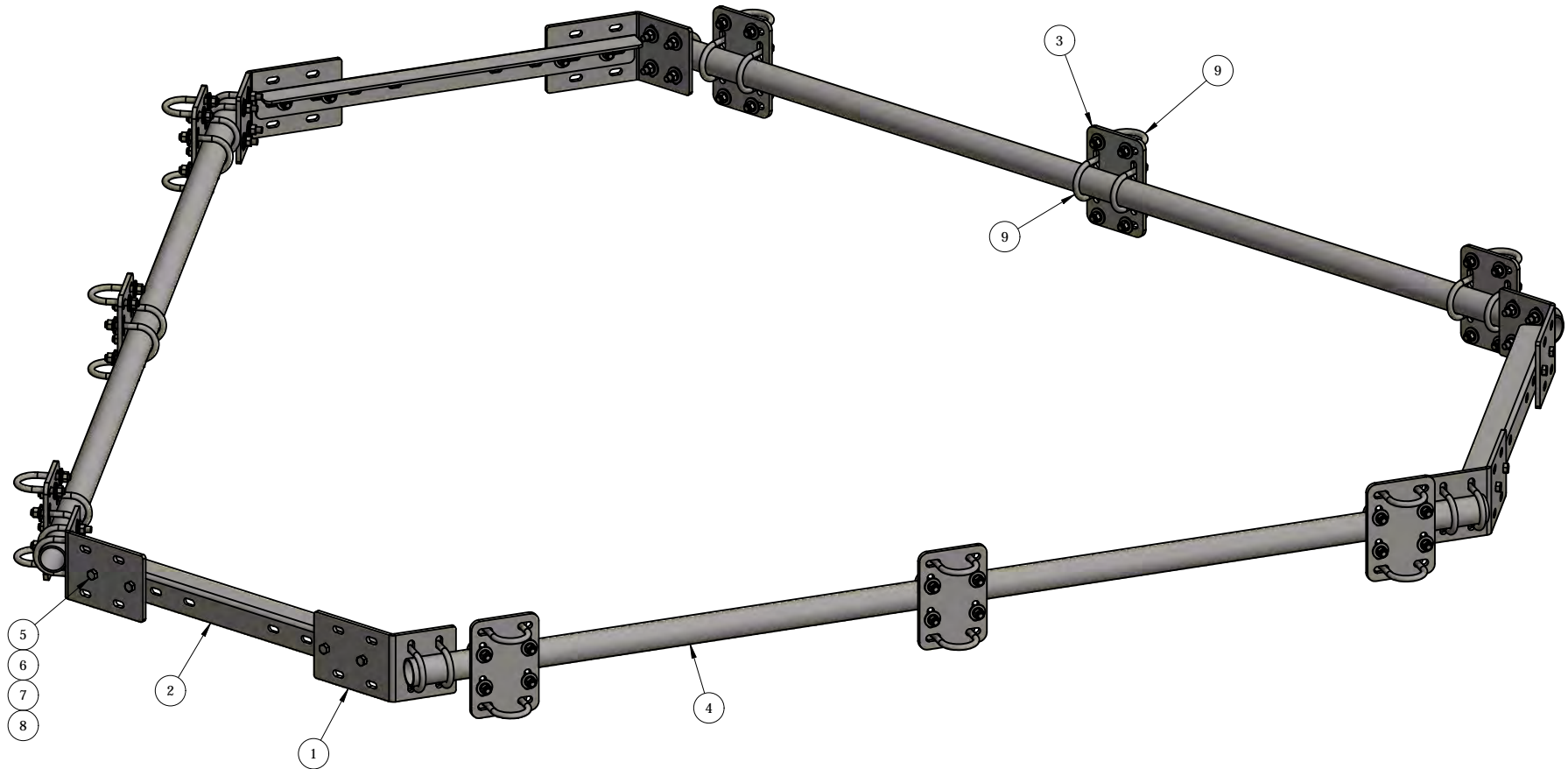


REV	BY	DESCRIPTION	DATE
A	KY	SEE MODEL I PROPERTIES/COMMENTS	11/2/2020

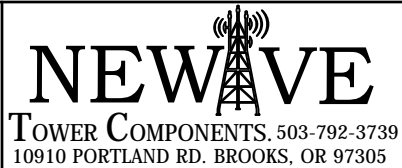


ITEM	PART #	QTY	DESCRIPTION	LENGTH	FINISH	UNIT WT
1	LPHK.08	6	3/8" PLATE		HDG	8.27
2	LPHK.09	3	1/4" PLATE		HDG	10.65
4	P23-96	3	2" STD PIPE	8'	HDG	29.25
3	CXP1	9	3/8" PLATE		SEE W/O	4.81
5	27-4301-005	12	1/2" x 1 1/2" GR.5 HDG BOLT			0.13
6	27-5200-005	12	1/2 A36 HDG FLAT WASHER			0.04
7	27-5210-005	12	1/2 HDG LOCK WASHER			0.01
8	27-5222-005	12	1/2 HDG HEX NUT			0.04
9	27-6060-005	48	GALV. 1/2" x 2-1/2" x 4" GR-5 U-BOLT ASSEMBLY			0.76

THIS DESIGN AND INFORMATION CONTAINED ON THIS PRINT IS THE PROPERTY OF VALLEY FAB CORPORATION. ANY REPRODUCTION, DUPLICATION OR TRANSFER OF THE PROPRIETARY CONTENT IS PROHIBITED WITHOUT WRITTEN PERMISSION.

STANDARD TOLERANCES:

(UNLESS OTHERWISE NOTED)
 FRACTIONS - 1/16"
 DECIMALS - 0.01"
 ANGLES - 0.5°



TOTAL WT: 251.75 LB

QTY:

FINISH:

JOB #:

TITLE:

**3-SECTOR LOW-PROFILE HANDRAIL KIT
 FOR UP TO 8'-0" FACE, MADE FOR LPCP-8**

SERIES: MONOPOLE MOUNTING

SHEET: 1 OF 1

DRAWN BY:

JG

DATE:

7/17/2018

CHK'D BY:

KY

DRAWING NO.

LPHK-8