

ITEM	PART #	QTY	DESCRIPTION	LENGTH	FINISH	UNIT WT
1	AM1015-XP.01	6	3/8" PLATE		HDG	15.26
2	AM1028-U.01	6	3/8" PLATE		HDG	12.19
3	AM1028-U.03	6	3/8" PLATE		HDG	12.52
4	AM1030-23M.02	6	STIFF ARM HALF CLAMP WELDMENT		HDG	0.92
5	AM1031.03	12	1/4" PLATE		HDG	1.79
6	AM1031HD.03	12	3/16" PLATE		HDG	1.87
7	ATV1-33	3	33" STAND OFF WELDMENT		HDG	168.97
8	MF1236-3.01	6	UNIVERSAL 12" TO 36" RING MOUNT WELDMENT		HDG	50.60
9	P35-126	6	3" STD PIPE	10'-6"	HDG	79.63
10	P178-126	6	1 1/2" STD PIPE	10'-6"	HDG	28.57
11	27-5580-005	18	3/4" x 28" B7 HDG ALL-THREAD	2'-4"		3.51
12	27-5481-005	36	3/4 A36 HDG FLAT WASHER			0.11
13	27-5490-005	36	3/4 HDG LOCK WASHER			0.04
14	27-5500-005	36	3/4 HDG HEAVY HEX NUT			0.21
15	27-4404-005	36	5/8" x 2 1/4" GR.5 HDG BOLT			0.29
16	27-5370-005	72	5/8 A36 HDG FLAT WASHER			0.08
17	27-5380-005	36	5/8 HDG LOCK WASHER			0.03
18	27-5391-005	36	5/8" HDG HEX NUT			0.08
19	TR12-10	12	1/2" x 10" A36 HDG ALL-THREAD	10"		0.56
20	27-4300-005	12	1/2" x 1 1/4" GR.5 HDG BOLT			0.12
21	27-5210-005	36	1/2 HDG LOCK WASHER			0.01
22	27-5222-005	36	1/2 HDG HEX NUT			0.04
23	27-6230-005	12	GALV. 5/8" x 4-5/8" x 6-1/2" U-BOLT ASSEMBLY			1.80
24	27-6200-005	12	GALV. 5/8" x 3-5/8" x 6" U-BOLT ASSEMBLY			1.66
25	27-6140-005	12	GALV. 1/2" x 4 5/8" x 6 1/2" U-BOLT ASSEMBLY			1.10
26	27-6090-005	6	GALV. 1/2" x 3 5/8" x 5" U-BOLT ASSEMBLY			0.90
27	27-6040-005	24	GALV. 3/8" x 2" x 4" U-BOLT ASSEMBLY			0.38

THIS DESIGN AND INFORMATION CONTAINED ON THIS PRINT IS THE PROPERTY OF VALLEY FAB CORPORATION. ANY REPRODUCTION, DUPLICATION OR TRANSFER OF THE PROPRIETARY CONTENT IS PROHIBITED WITHOUT WRITTEN PERMISSION.

STANDARD TOLERANCES:
(UNLESS OTHERWISE NOTED)
FRACTIONS - 1/16"
DECIMALS - 0.01"
ANGLES - 0.5°

NEWAVE
TOWER COMPONENTS, 503-792-3739
10910 PORTLAND RD. BROOKS, OR 97305

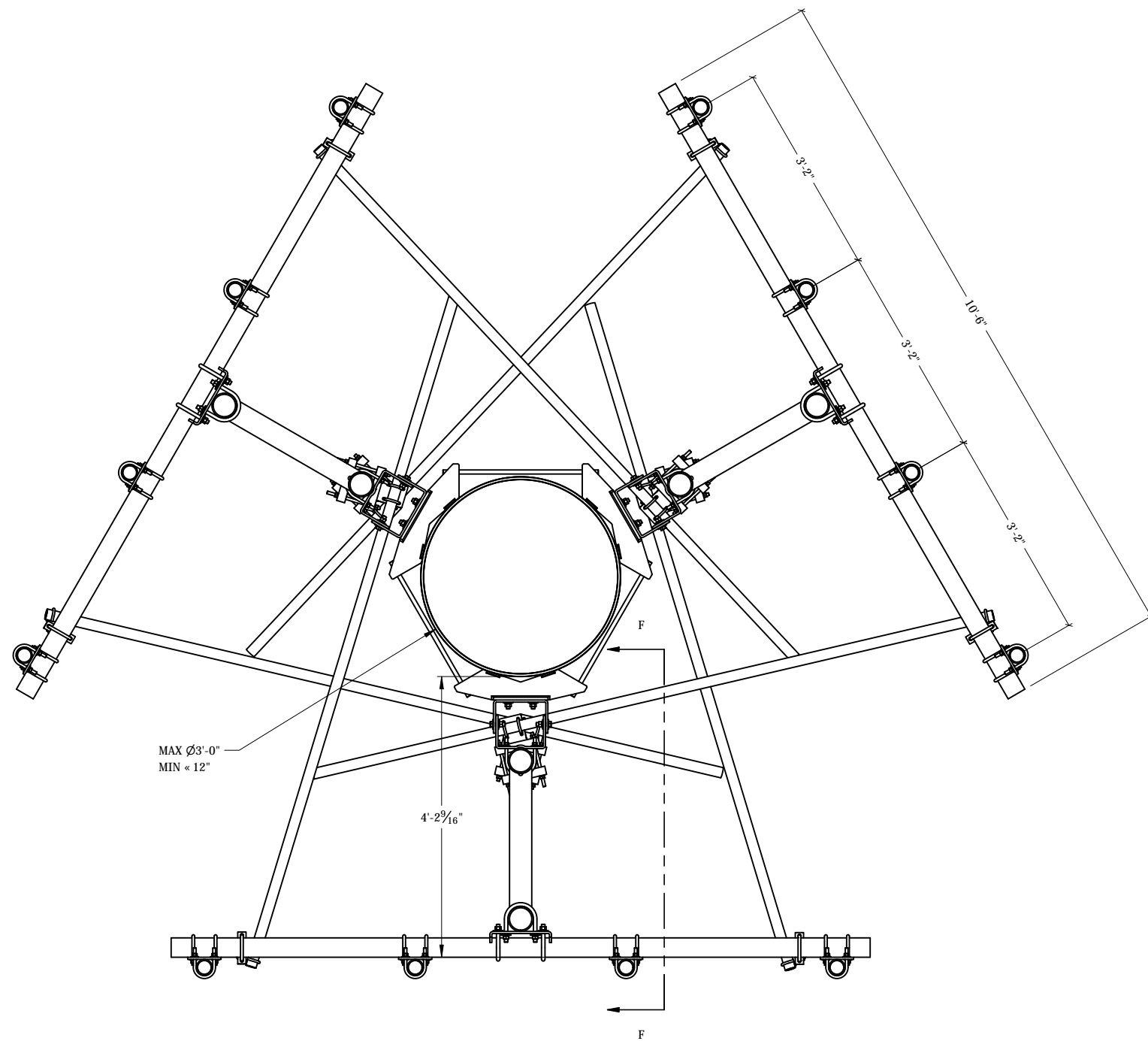
TOTAL WT: 2327.7 LB
QTY:
FINISH:
JOB #:

TITLE: 3-SECTOR, 10'-6" FACE FRAME, ADJ. TAPER, DBL RING MOUNT, FITS 12" TO 36" O.D. POLE

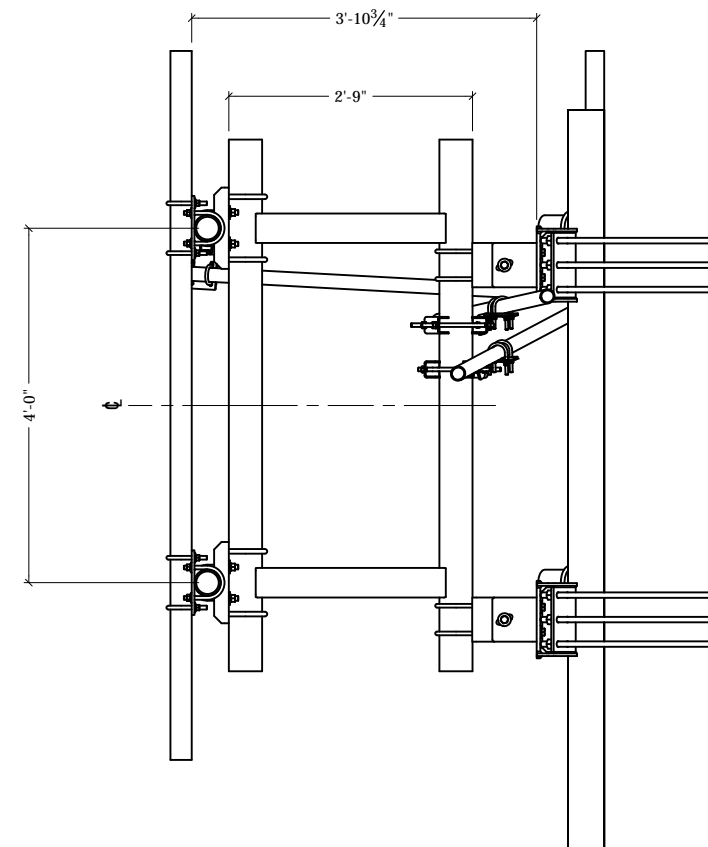
SERIES: MONOPOLE MOUNTING SHEET: 1 OF 2

DRAWN BY: KY DATE: 11/5/2020 CHK'D BY:

DRAWING NO. M30-ATV1-310-3



TOP VIEW



SECTION F-F

THIS DESIGN AND INFORMATION CONTAINED ON THIS PRINT IS THE PROPERTY OF VALLEY FAB CORPORATION. ANY REPRODUCTION, DUPLICATION OR TRANSFER OF THE PROPRIETARY CONTENT IS PROHIBITED WITHOUT WRITTEN PERMISSION.

STANDARD TOLERANCES:

(UNLESS OTHERWISE NOTED)
 FRACTIONS - 1/16"
 DECIMALS - 0.01"
 ANGLES - 0.5°



TOWER COMPONENTS, 503-792-3739
 10910 PORTLAND RD. BROOKS, OR 97305

TOTAL WT: 2327.7 LB

QTY:

FINISH:

JOB #:

TITLE:
 3-SECTOR, 10'-6" FACE FRAME, ADJ. TAPER,
 DBL RING MOUNT, FITS 12" TO 36" O.D. POLE

SERIES: MONOPOLE MOUNTING

SHEET: 2 OF 2

DRAWN BY: KY	DATE: 11/5/2020	CHK'D BY:
-----------------	--------------------	-----------

DRAWING NO.
 M30-ATV1-310-3