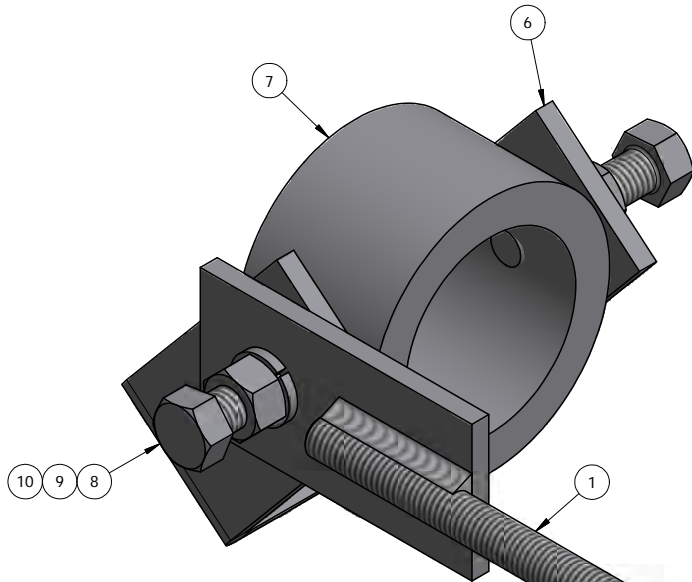
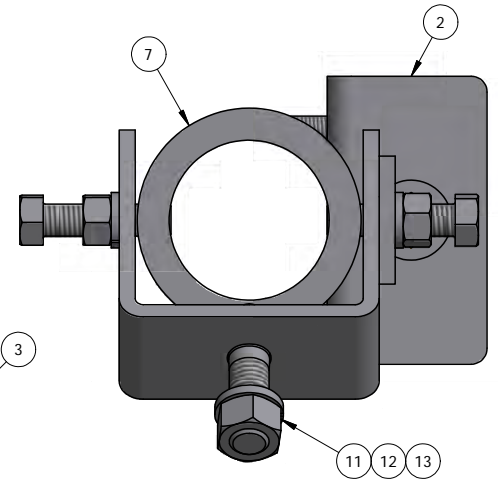
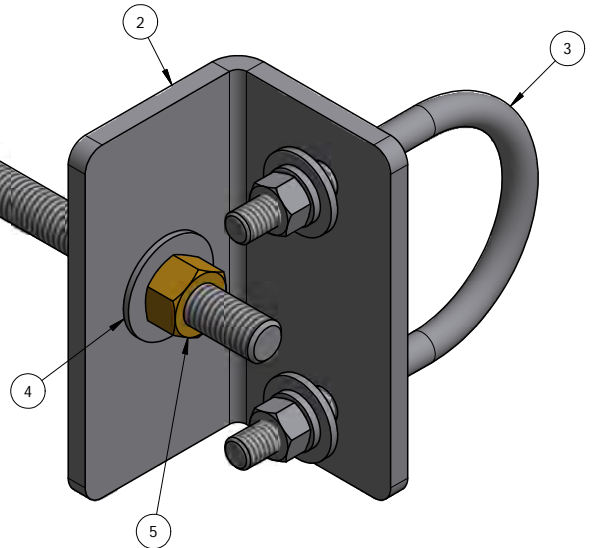


ITEM	PART #	DESCRIPTION	QTY	UNIT WT
1	MAA-178.01	STAINLESS STEEL AZIMUTH ADJUSTMENT WELDMENT	1	1.29
2	MAA-238.01	1/4" BENT AZIMUTH ADJUSTMENT PLATE	1	1.44
3	27-6050-005	GALV. 3/8" x 2-1/2" x 4" U-BOLT ASSEMBLY	1	0.40
4	27-9150-005	SS 1/2" FLAT WASHER	2	0.02
5	27-7500-005	BRASS 1/2" FINISHED HEX NUT	2	0.05
6	AM1031-S2.01	1/4" STIFF ARM SWIVEL PLATE	1	1.49
7	AM1031-S2.02	STIFF ARM SEAMLESS TUBE SLEEVE	1	2.63
8	27-5261-005	GALV. 1/2" x 2" GR.5 FULL THREADED BOLT	2	0.16
9	27-5210-005	GALV. 1/2" LOCK WASHER	2	0.01
10	27-5222-005	GALV. 1/2" HEX NUT	2	0.04
11	27-4403-005	GALV. 5/8" x 2" GR.5 BOLT	1	0.27
12	27-5380-005	GALV. 5/8" LOCK WASHER	1	0.03
13	27-5391-005	GALV. 5/8" HEX NUT	1	0.08



10 9 8

1



FRONT VIEW

QTY:  
CHK:

**STANDARD TOLERANCES:**  
(UNLESS OTHERWISE NOTED)  
FRACTIONS ± 1/16"  
DECIMALS ± .005"  
ANGLES ± .5°

THIS DESIGN AND INFORMATION CONTAINED ON THIS PRINT IS THE PROPERTY OF NEWAVE TOWER COMPONENTS LLC. ANY REPRODUCTION, DUPLICATION OR TRANSFER OF THE PROPRIETARY CONTENT IS PROHIBITED WITHOUT WRITTEN PERMISSION.

  
**NEWAVE**  
 TOWER COMPONENTS. 503-792-3739  
 10910 PORTLAND RD. BROOKS, OR 97305

MATERIAL: AS SHOWN  
 HOLES: AS SHOWN  
 FINISH: MULT  
 DRAWN BY: KY  
 CHECKED BY:  
 DATE: 3/29/2016

TITLE: MICROWAVE AZIMUTH ADJUSTMENT ASSEMBLY FOR 2-3/8" O.D PIPE  
 SERIES: TOWER ANTENNA MOUNTING  
 PART WT (BARE): 8.2 LB  
 DRAWING NO. MAA-238  
 SHEET: 1 OF 1