

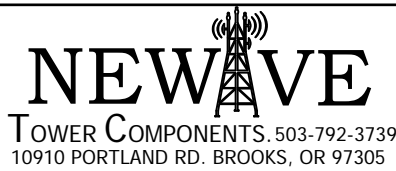
NOTE: PROVIDE BOTH U-BOLTS WHEN MOUNTING PIPE IS UNKNOWN!

ITEM	PART #	DESCRIPTION	QTY
1	MCMX.01	CHAIN MOUNT BRACKET WELDMENT	2
2	MCMXX.01	UNIVERSAL BENT MOUNT PLATE	2
3	35-G14CG43	GALV. 1/4" HIGH TINSEL STRENGTH CHAIN @ 10'-0" LONG	4
4	MCMX.04	CHAIN MOUNT CLEVIS BOLT ATTACHEMENT WELDMENT	8
5	27-5340-005	1/2" x 6" CLEVIS BOLT - RH OR LH THREAD	8
6	27-5210-005	GALV. 1/2" LOCK WASHER	8
7	27-5222-005	GALV. 1/2" HEX NUT (MATCH THREAD TO CLEVIS BOLT)	16
8	27-5451-005	GALV. 5/8" x 2-3/4" A325 BOLT ASSEMBLY	4
9	27-5380-005	GALV. 5/8" LOCK WASHER	4
10	27-5390-005	GALV. 5/8" HEAVY HEX NUT	4
11	27-4206-005	GALV. 3/8" x 2-1/4" GR.5 BOLT	8
12	27-5020-005	GALV. 3/8" LOCK WASHER	8
13	27-5030-005	GALV. 3/8" HEX NUT	8
14	27-6060-005	GALV. 1/2" x 2-1/2" x 4" U-BOLT ASSEMBLY	4
15	27-6140-005	GALV. 1/2" x 4 5/8" x 6 1/2" U-BOLT ASSEMBLY	4

QTY:
CHK:

STANDARD TOLERANCES:
(UNLESS OTHERWISE NOTED)
FRACTIONS ±1/16"
DECIMALS ±.005"
ANGLES ±.5°

THIS DESIGN AND INFORMATION CONTAINED ON THIS PRINT IS THE PROPERTY OF NEWAVE TOWER COMPONENTS LLC. ANY REPRODUCTION, DUPLICATION OR TRANSFER OF THE PROPRIETARY CONTENT IS PROHIBITED WITHOUT WRITTEN PERMISSION.



MATERIAL: AS SHOWN
HOLES: AS SHOWN
FINISH: HDG
DRAWN BY: KY
CHECKED BY:
DATE: 12/28/2012

TITLE: MONOPOLE CHAIN MOUNT DOUBLE CHAIN W/ 1-SECTOR
SERIES: MONOPOLE MOUNTING
PART WT (BARE): 55.4 LB
DRAWING NO. MCMXX-1
SHEET: 1 OF 1