

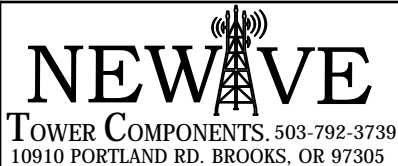
DETAIL A

VIEW B-B

ITEM	PART #	QTY	DESCRIPTION	LENGTH	FINISH	UNIT WT
1	MTL-IS.01	1	3/16" MIS TRANSMISSION CHANNEL		HDG	13.29
2	MTL-IS.02	2	3/16" MIS TRANSMISSION BACKING PLATE		HDG	1.16
3	MTL-IS.03	2	1/4" MIS TRANSMISSION BRACKET		HDG	2.13
4	MTL-IS4.01	4	1/4" MIS 4'-0" TRANSMISSION ADJUSTMENT BAR		HDG	2.46
5	MTL-IS4.02	1	11-3/4" x 4" BRIDGE CHANNEL			11.93
6	27-6140-005	2	GALV. 1/2" x 4 5/8" x 6 1/2" U-BOLT ASSEMBLY			1.11
7	TR38-24	2	GALV. 3/8" x 24" ALL-THREAD			0.75
8	27-4210-005	4	GALV. 3/8" x 2-3/4" GR.5 FULL THREADED BOLT			0.10
9	27-5060-005	10	GALV. 3/8" x 1-1/4" GR.5 BOLT			0.06
10	27-5010-005	12	GALV. 3/8" FLAT WASHER		HDG	0.02
11	27-5020-005	20	3/8" HDG LOCK WASHER			0.01
12	27-5030-005	22	3/8" HDG HEX NUT			0.02
13	SFW-716G	4	GALV. 1-1/2" SQUARE WASHER W/ 7/16" HOLE		HDG	0.08

THIS DESIGN AND INFORMATION CONTAINED ON THIS PRINT IS THE PROPERTY OF VALLEY FAB CORPORATION. ANY REPRODUCTION, DUPLICATION OR TRANSFER OF THE PROPRIETARY CONTENT IS PROHIBITED WITHOUT WRITTEN PERMISSION.

STANDARD TOLERANCES:
 (UNLESS OTHERWISE NOTED)
 FRACTIONS - 1/16"
 DECIMALS - 0.01"
 ANGLES - 0.5°



TOTAL WT: 47.45 LB
 QTY:
 FINISH: HDG
 JOB #:

TITLE: 4' MICROWAVE DISH TRANSMISSION LINE ICE SHIELD
 SERIES: MICROWAVE ICE SHIELD SHEET: 1 OF 1
 DRAWN BY: JG DATE: 7/17/2018 CHK'D BY:
 DRAWING NO. MTL-IS4