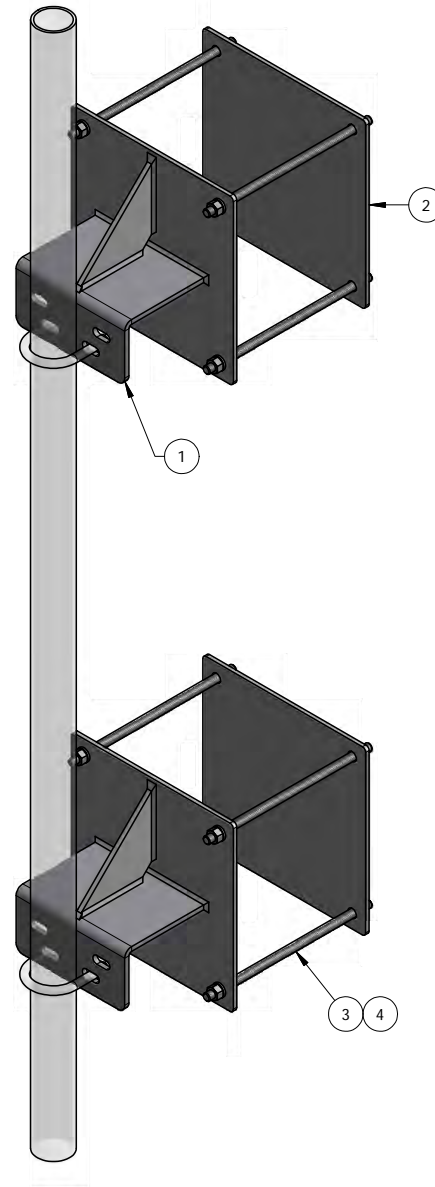


REV	BY	DESCRIPTION	DATE
A	KY	HARDWARE CHANGED TO 1/2"	8/13/2013

ITEM	PART #	DESCRIPTION	QTY
1	RT4015	HEAVY DUTY ADJUSTABLE WALL MOUNT WELDMNT	2
2	RT4015.01	1/4" x 12" SQ. WALL MOUNT BACK PLATE	2
3	TR12-12	GALV. 1/2" x 12" ALL-THREAD	8
4	27-5210-005	GALV. 1/2" LOCK WASHER	16
5	27-5222-005	GALV. 1/2" HEX NUT	16



**STANDARD TOLERANCES:**

(UNLESS OTHERWISE NOTED)

FRACTIONS ±1/16"  
 DECIMALS ±.005"  
 ANGLES ±.5°

THIS DESIGN AND INFORMATION CONTAINED ON THIS PRINT IS THE PROPERTY OF NEWAVE TOWER COMPONENTS LLC. ANY REPRODUCTION, DUPLICATION OR TRANSFER OF THE PROPRIETARY CONTENT IS PROHIBITED WITHOUT WRITTEN PERMISSION.



MATERIAL:	DRAWN BY:
AS SHOWN	KY
HOLES:	CHECKED BY:
AS SHOWN	-
FINISH:	DATE:
HDG	01/11/2013

TITLE:		
HEAVY DUTY ADJUSTABLE WALL MOUNT 12" SQ. W/ 6" STAND-OFF (HOLLOW WALL)		
SERIES: ROOFTOP/WALL MOUNT		
PROJECT NO:	DRAWING NO.	SHEET:
-	RT4015-H	1 OF 1