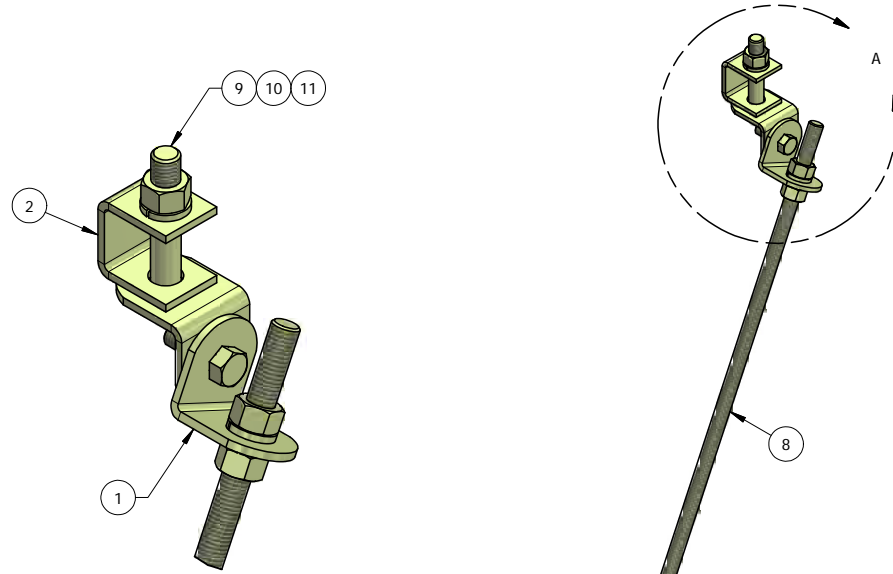
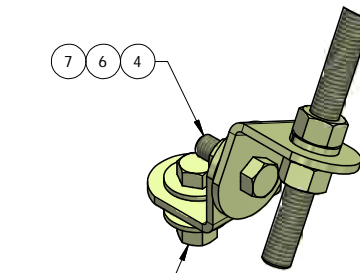
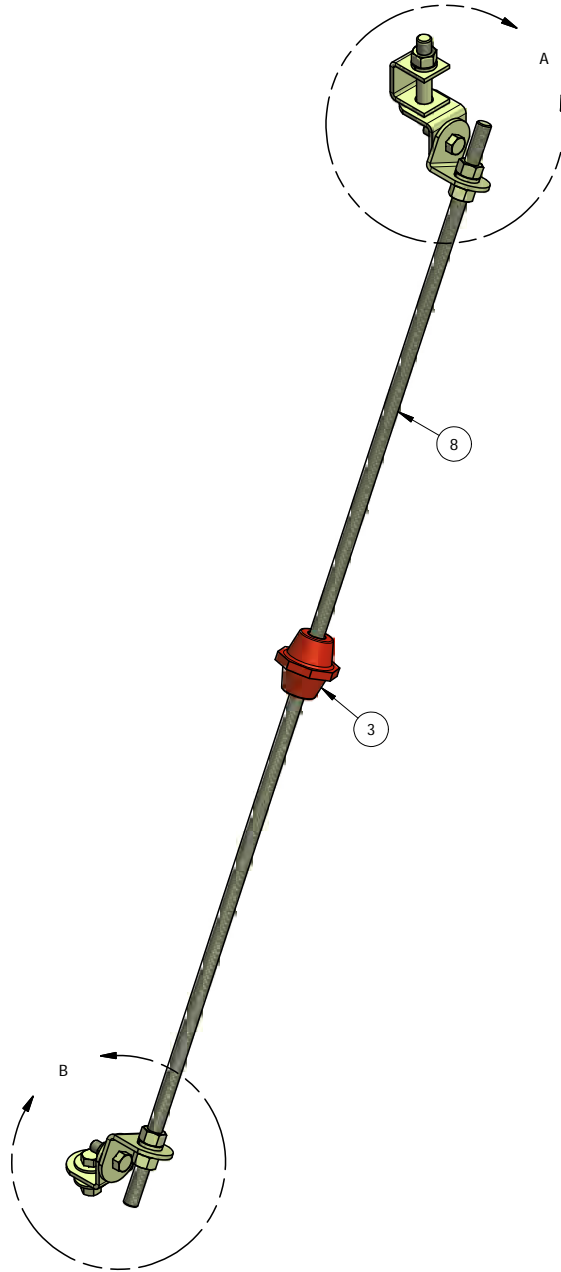


ITEM	PART #	DESCRIPTION	QTY	UNIT WT
1	SMB-11.01	SEISMIC BRACING BENT ANGLE PLATE	4	0.39
2	SMB-11.02	3/16" U-CLAMP PLATE	1	0.38
3	GBB-CH-58	5/8" INSULATOR CHARRY	1	0.45
4	27-2067-001	YELLOW ZINC - 1/2" x 1-1/2" GR.8 BOLT	3	0.13
5	27-2063-001	YELLOW ZINC 1/2" FLAT WASHER	2	0.04
6	27-2062-001	YELLOW ZINC 1/2" LOCK WASHER	3	0.01
7	27-2060-001	YELLOW ZINC 1/2" HEX NUT GR.8	3	0.04
8	27-4010-001	YELLOW ZINC 5/8" x 24" ALL-THREAD - GR.8	2	2.09
9	27-2087-001	YELLOW ZINC - 5/8" x 3-1/2" GR.8 BOLT	1	0.41
10	27-2082-001	YELLOW ZINC - 5/8" LOCK WASHER	5	0.03
11	27-2080-001	YELLOW ZINC 5/8" HEX NUT GR.8	5	0.08



DETAIL A



DETAIL B

QTY:
CHK:

STANDARD TOLERANCES:
(UNLESS OTHERWISE NOTED)
FRACTIONS ± 1/16"
DECIMALS ± .005"
ANGLES ± .5°

THIS DESIGN AND INFORMATION CONTAINED ON THIS PRINT IS THE PROPERTY OF NEWAVE TOWER COMPONENTS LLC. ANY REPRODUCTION, DUPLICATION OR TRANSFER OF THE PROPRIETARY CONTENT IS PROHIBITED WITHOUT WRITTEN PERMISSION.

NEWAVE
Tower Components. 503-792-3739
10910 PORTLAND RD. BROOKS, OR 97305

MATERIAL: AS SHOWN
HOLES: AS SHOWN
FINISH: YLW ZINC
DRAWN BY: KY
CHECKED BY:
DATE: 12/12/2013

TITLE: SEISMIC BRACING KIT WITH 2'-0" ALL THREAD
SERIES: SITE ACCESSORIES
PART WT (BARE): 8.2 LB
DRAWING NO. SMB-12
SHEET: 1 OF 1